

Datasheet for ABIN2854672
anti-ELF3 antibody (C-Term)

3 Images

[Go to Product page](#)

Overview

Quantity:	100 µL
Target:	ELF3
Binding Specificity:	C-Term
Reactivity:	Human
Host:	Rabbit
Clonality:	Polyclonal
Conjugate:	This ELF3 antibody is un-conjugated
Application:	Western Blotting (WB), Immunofluorescence (IF), Immunohistochemistry (Paraffin-embedded Sections) (IHC (p)), Immunocytochemistry (ICC)

Product Details

Immunogen:	Carrier-protein conjugated synthetic peptide encompassing a sequence within the C-terminus region of human ESE1. The exact sequence is proprietary.
Isotype:	IgG
Cross-Reactivity:	Mouse (Murine)
Cross-Reactivity (Details):	Mouse (85 %)
Characteristics:	Rabbit polyclonal antibody to ESE1 (E74-like factor 3 (ets domain transcription factor, epithelial-specific)) ESE1 antibody [C2C3], C-term
Purification:	Purified by antigen-affinity chromatography.

Target Details

Target:	ELF3
Alternative Name:	ESE1 (ELF3 Products)
Background:	<p>Transcriptional activator that binds and transactivates ETS sequences containing the consensus nucleotide core sequence GGA[AT]. Acts synergistically with POU2F3 to transactivate the SPRR2A promoter and with RUNX1 to transactivate the ANGPT1 promoter. Also transactivates collagenase, CCL20, CLND7, FLG, KRT8, NOS2, PTGS2, SPRR2B, TGFBR2 and TGM3 promoters. Represses KRT4 promoter activity. Involved in mediating vascular inflammation. May play an important role in epithelial cell differentiation and tumorigenesis. May be a critical downstream effector of the ERBB2 signaling pathway. May be associated with mammary gland development and involution. Plays an important role in the regulation of transcription with TATA-less promoters in preimplantation embryos, which is essential in preimplantation development.</p> <p>Cellular Localization: Cytoplasm , Nucleus</p>
Molecular Weight:	41 kDa
Gene ID:	1999

Application Details

Application Notes:	<p>Suggested dilution Reference ICC/IF 1:100-1:1000* IHC (Formalin-fixed paraffin-embedded sections) 1:100-1:1000* Western blot 1:500-1:3000* Not tested in other applications. *Optimal dilutions/concentrations should be determined by the researcher.Suggested dilutionReferenceICC/IF1:100-1:1000* IHC (Formalin-fixed paraffin-embedded sections)1:100-1:1000* Western blot1:500-1:3000*</p>
Comment:	Positive Control: 293T , A431 , H1299 , HeLa , Molt-4 , Raji
Restrictions:	For Research Use only

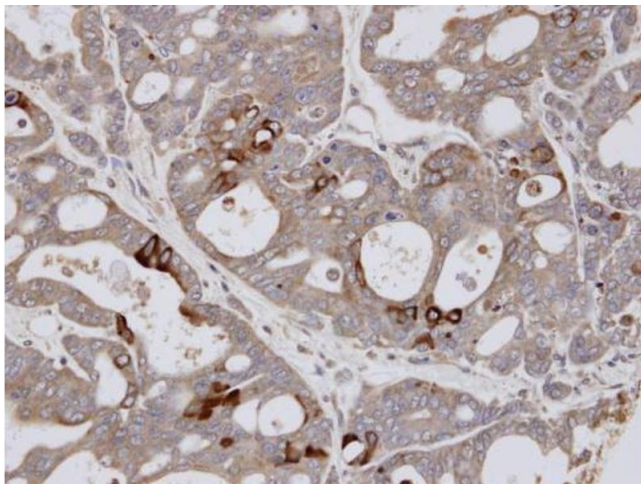
Handling

Format:	Liquid
Concentration:	1 mg/mL
Buffer:	1XPBS, 1 % BSA, 20 % Glycerol (pH 7). 0.01 % Thimerosal was added as a preservative.
Preservative:	Thimerosal (Merthiolate)

Handling

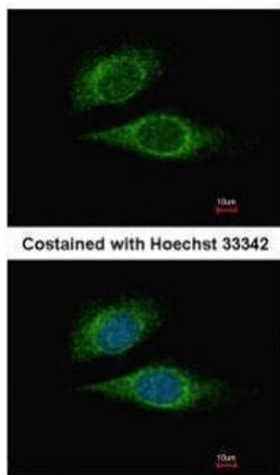
Precaution of Use:	This product contains Thimerosal (Merthiolate): a POISONOUS AND HAZARDOUS SUBSTANCE which should be handled by trained staff only.
Storage:	-20 °C
Storage Comment:	Keep as concentrated solution. Aliquot and store at -20°C or below. Avoid multiple freeze-thaw cycles.

Images



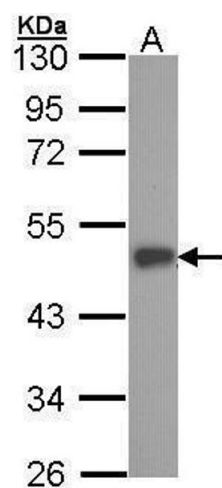
Immunohistochemistry

Image 1. IHC-P Image Immunohistochemical analysis of paraffin-embedded NCI-N87 xenograft, using ESE1 , antibody at 1:100 dilution.



Immunofluorescence

Image 2. ICC/IF Image Immunofluorescence analysis of methanol-fixed HeLa, using ESE1, antibody at 1:500 dilution.



Western Blotting

Image 3. WB Image Sample (30 ug of whole cell lysate) A:
A431 , 10% SDS PAGE antibody diluted at 1:1000