

Datasheet for ABIN2854673  
**anti-EML1 antibody (C-Term)**

## 6 Images

[Go to Product page](#)

## Overview

Quantity:	100 µL
Target:	EML1
Binding Specificity:	C-Term
Reactivity:	Human, Mouse, Rat, Monkey
Host:	Rabbit
Clonality:	Polyclonal
Conjugate:	This EML1 antibody is un-conjugated
Application:	Western Blotting (WB), Immunofluorescence (IF), Immunocytochemistry (ICC), Immunohistochemistry (Paraffin-embedded Sections) (IHC (p))

## Product Details

Immunogen:	Carrier-protein conjugated synthetic peptide encompassing a sequence within the C-terminus region of human EML1. The exact sequence is proprietary.
Isotype:	IgG
Cross-Reactivity:	Zebrafish (Danio rerio)
Cross-Reactivity (Details):	Zebrafish (85 %)
Characteristics:	Rabbit Polyclonal antibody to EML1 (echinoderm microtubule associated protein like 1) EML1 antibody [C3], C-term
Purification:	Purified by antigen-affinity chromatography.

## Target Details

Target:	EML1
Alternative Name:	EML1 ( <a href="#">EML1 Products</a> )
Background:	<p>Human echinoderm microtubule-associated protein-like is a strong candidate for the Usher syndrome type 1A gene. Usher syndromes (USHs) are a group of genetic disorders consisting of congenital deafness, retinitis pigmentosa, and vestibular dysfunction of variable onset and severity depending on the genetic type. The disease process in USHs involves the entire brain and is not limited to the posterior fossa or auditory and visual systems. The USHs are categorized as type I (USH1A, USH1B, USH1C, USH1D, USH1E and USH1F), type II (USH2A and USH2B) and type III (USH3). The type I is the most severe form. Gene loci responsible for these three types are all mapped. Two transcript variants encoding different isoforms have been found for this gene.</p> <p>Cellular Localization: Cytoplasm</p>
Molecular Weight:	90 kDa
Gene ID:	2009

## Application Details

Application Notes:	<p>Suggested dilution Reference ICC/IF 1:100-1:1000* IHC (Formalin-fixed paraffin-embedded sections) 1:100-1:1000* Western blot 1:500-1:3000* Not tested in other applications. *Optimal dilutions/concentrations should be determined by the researcher.Suggested dilutionReference ICC/IF1:100-1:1000* IHC (Formalin-fixed paraffin-embedded sections)1:100-1:1000* Western blot1:500-1:3000*</p>
Comment:	Positive Control: H1299 , NIH-3T3
Restrictions:	For Research Use only

## Handling

Format:	Liquid
Concentration:	1 mg/mL
Buffer:	1XPBS, 1 % BSA, 20 % Glycerol ( pH 7). 0.01 % Thimerosal was added as a preservative.
Preservative:	Thimerosal (Merthiolate)
Precaution of Use:	This product contains Thimerosal (Merthiolate): a POISONOUS AND HAZARDOUS SUBSTANCE

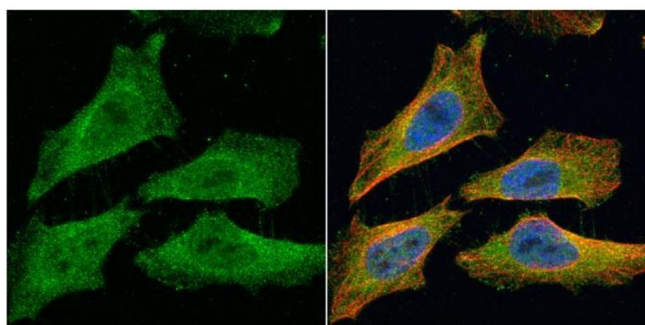
## Handling

which should be handled by trained staff only.

Storage: -20 °C

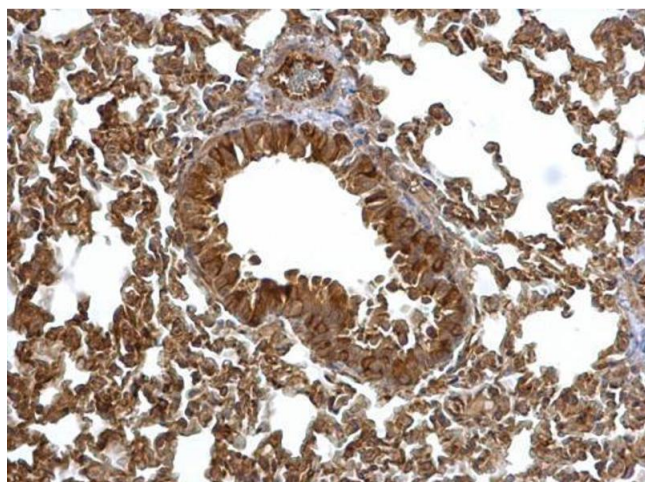
Storage Comment: Keep as concentrated solution. Aliquot and store at -20°C or below. Avoid multiple freeze-thaw cycles.

## Images



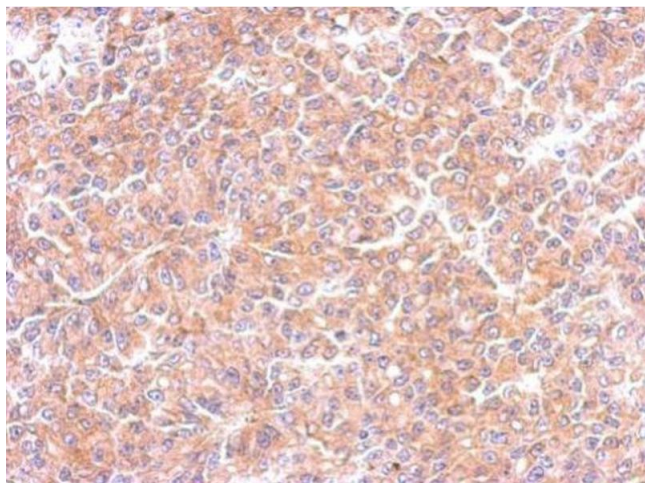
### Immunofluorescence

**Image 1.** ICC/IF Image EML1 antibody [c3], c-term detects EML1 protein at cytoplasm by immunofluorescent analysis. Sample: HeLa cells were fixed in 4% paraformaldehyde at RT for 15 min. Green: EML1 protein stained by EML1 antibody [c3], c-term, diluted at 1:200. Red: alpha Tubulin, a cytoskeleton marker, stained by alpha Tubulin antibody [GT114], diluted at 1:1000. Blue: Hoechst 33342 staining.



### Immunohistochemistry

**Image 2.** IHC-P Image EML1 antibody [C3], C-term detects EML1 protein at cytosol on mouse lung by immunohistochemical analysis. Sample: Paraffin-embedded mouse lung. EML1 antibody [C3], C-term, dilution: 1:500.



#### Immunohistochemistry

**Image 3.** IHC-P Image Immunohistochemical analysis of paraffin-embedded RF48 xenograft, using EML1, antibody at 1:500 dilution.

Please check the [product details page](#) for more images. Overall 6 images are available for ABIN2854673.