

Datasheet for ABIN2854675
anti-EPS8 antibody (C-Term)

3 Images

[Go to Product page](#)

Overview

Quantity:	100 µL
Target:	EPS8
Binding Specificity:	C-Term
Reactivity:	Human
Host:	Rabbit
Clonality:	Polyclonal
Conjugate:	This EPS8 antibody is un-conjugated
Application:	Western Blotting (WB), Immunohistochemistry (Paraffin-embedded Sections) (IHC (p)), Immunoprecipitation (IP)

Product Details

Immunogen:	Carrier-protein conjugated synthetic peptide encompassing a sequence within the C-terminus region of human EPS8. The exact sequence is proprietary.
Isotype:	IgG
Cross-Reactivity:	Human, Mouse, Rat
Characteristics:	Rabbit polyclonal antibody to EPS8 (epidermal growth factor receptor pathway substrate 8) EPS8 antibody [C3], C-term
Purification:	Purified by antigen-affinity chromatography.

Target Details

Target:	EPS8
---------	------

Target Details

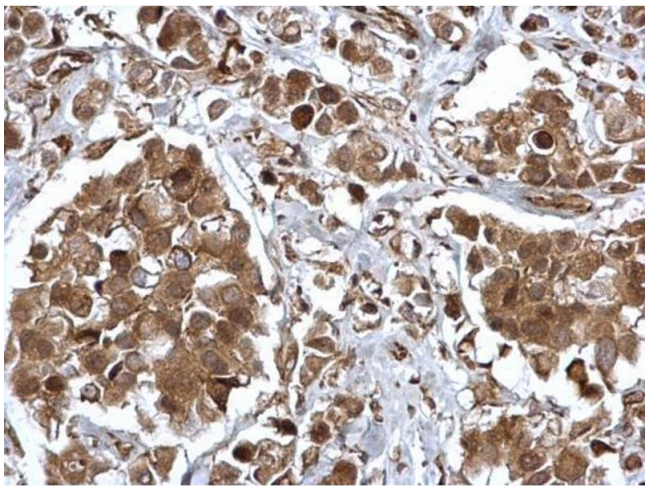
Alternative Name:	epidermal growth factor receptor pathway substrate 8 (EPS8 Products)
Background:	This gene encodes a member of the EPS8 family. This protein contains one PH domain and one SH3 domain. It functions as part of the EGFR pathway, though its exact role has not been determined. Highly similar proteins in other organisms are involved in the transduction of signals from Ras to Rac and growth factor-mediated actin remodeling. Alternate transcriptional splice variants of this gene have been observed but have not been thoroughly characterized.
Molecular Weight:	92 kDa
Gene ID:	2059
UniProt:	Q12929
Pathways:	EGFR Signaling Pathway , Regulation of Actin Filament Polymerization

Application Details

Application Notes:	WB: 1:500-1:3000. IHC-P: 1:100-1:1000. IP: 1:100-1:500. Optimal dilutions/concentrations should be determined by the researcher. Not tested in other applications.
Comment:	Positive Control: H1299 , HeLa , mouse brain , rat brain
Restrictions:	For Research Use only

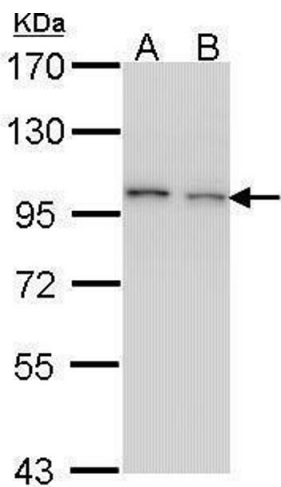
Handling

Format:	Liquid
Concentration:	1 mg/mL
Buffer:	1XPBS (pH 7), 20 % Glycerol, 0.01 % Thimerosal
Preservative:	Thimerosal (Merthiolate)
Precaution of Use:	This product contains Thimerosal (Merthiolate): a POISONOUS AND HAZARDOUS SUBSTANCE which should be handled by trained staff only.
Storage:	4 °C,-20 °C
Storage Comment:	Store as concentrated solution. Centrifuge briefly prior to opening vial. For short-term storage (1-2 weeks), store at 4°C. For long-term storage, aliquot and store at -20°C or below. Avoid multiple freeze-thaw cycles.



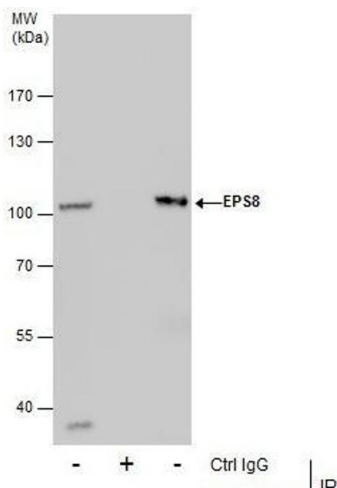
Immunohistochemistry

Image 1. IHC-P Image EPS8 antibody [C3], C-term detects EPS8 protein at cytosol and nucleus on human breast carcinoma by immunohistochemical analysis. Sample: Paraffin-embedded human breast carcinoma. EPS8 antibody [C3], C-term , dilution: 1:500.



Western Blotting

Image 2. WB Image Sample (30 ug of whole cell lysate) A: H1299 B: HeLa 7.5% SDS PAGE EPS8 antibody antibody diluted at 1:1000



Immunoprecipitation

Image 3. IP Image Immunoprecipitation of EPS8 protein from HepG2 whole cell extracts using 5 µg of EPS8 antibody [C3], C-term, Western blot analysis was performed using EPS8 antibody [C3], C-term, EasyBlot anti-Rabbit IgG was used as a secondary reagent.