

Datasheet for ABIN2854677
anti-ERG antibody (C-Term)[Go to Product page](#)

4 Images

Overview

Quantity:	100 µL
Target:	ERG
Binding Specificity:	C-Term
Reactivity:	Human, Mouse
Host:	Rabbit
Clonality:	Polyclonal
Conjugate:	This ERG antibody is un-conjugated
Application:	Western Blotting (WB), Immunofluorescence (IF), Immunocytochemistry (ICC)

Product Details

Immunogen:	Carrier-protein conjugated synthetic peptide encompassing a sequence within the C-terminus region of human ERG. The exact sequence is proprietary.
Isotype:	IgG
Cross-Reactivity:	Rat (Rattus), Xenopus tropicalis, Pig (Porcine), Chicken
Cross-Reactivity (Details):	Rat (92 %), Xenopus Tropicalis (92 %), Pig (92 %), Chicken (85 %)
Characteristics:	Rabbit Polyclonal antibody to ERG (transcriptional regulator ERG) ERG antibody [C3], C-term
Purification:	Affinity purified by Protein A.

Target Details

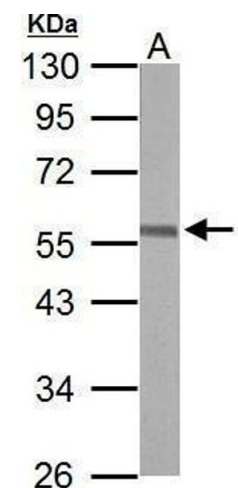
Target:	ERG
Alternative Name:	ERG (ERG Products)
Background:	Cellular Localization: Nucleus
Molecular Weight:	55 kDa
Gene ID:	2078

Application Details

Application Notes:	Suggested dilution Reference ICC/IF 1:100-1:1000* Western blot 1:1000-1:10000* Not tested in other applications. *Optimal dilutions/concentrations should be determined by the researcher.Suggested dilutionReferenceICC/IF1:100-1:1000* Western blot1:1000-1:10000*
Comment:	Positive Control: H1299 , mouse brain
Restrictions:	For Research Use only

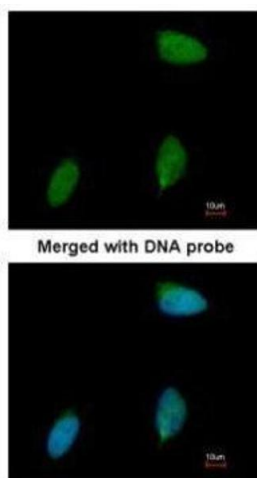
Handling

Format:	Liquid
Concentration:	1 mg/mL
Buffer:	1XPBS, 1 % BSA, 20 % Glycerol (pH 7). 0.01 % Thimerosal was added as a preservative.
Preservative:	Thimerosal (Merthiolate)
Precaution of Use:	This product contains Thimerosal (Merthiolate): a POISONOUS AND HAZARDOUS SUBSTANCE which should be handled by trained staff only.
Storage:	-20 °C
Storage Comment:	Keep as concentrated solution. Aliquot and store at -20°C or below. Avoid multiple freeze-thaw cycles.



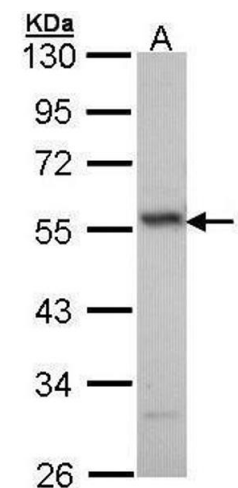
Western Blotting

Image 1. WB Image Sample (50 ug of whole cell lysate) A: mouse brain 10% SDS PAGE antibody diluted at 1:10000



Immunofluorescence

Image 2. ICC/IF Image Immunofluorescence analysis of paraformaldehyde-fixed human pancreatic cancer cell line, using ERG, antibody at 1:50 dilution.



Western Blotting

Image 3. WB Image Sample (30 ug of whole cell lysate) A: H1299 10% SDS PAGE antibody diluted at 1:1000

Please check the [product details page](#) for more images. Overall 4 images are available for ABIN2854677.