

Datasheet for ABIN2854679
anti-FCGR2B antibody (C-Term)[Go to Product page](#)

2 Images

Overview

Quantity:	100 µL
Target:	FCGR2B
Binding Specificity:	C-Term
Reactivity:	Human
Host:	Rabbit
Clonality:	Polyclonal
Conjugate:	This FCGR2B antibody is un-conjugated
Application:	Western Blotting (WB), Immunofluorescence (IF), Immunocytochemistry (ICC)

Product Details

Immunogen:	Carrier-protein conjugated synthetic peptide encompassing a sequence within the C-terminus region of human CD32B. The exact sequence is proprietary.
Isotype:	IgG
Cross-Reactivity:	Rhesus Monkey
Cross-Reactivity (Details):	Rhesus Monkey (92 %)
Characteristics:	Rabbit Polyclonal antibody to CD32B (Fc fragment of IgG, low affinity IIb, receptor (CD32)) CD32B antibody [C2C3], C-term
Purification:	Purified by antigen-affinity chromatography.

Target Details

Target:	FCGR2B
Alternative Name:	CD32B (FCGR2B Products)
Background:	<p>The protein encoded by this gene is a low affinity receptor for the Fc region of immunoglobulin gamma complexes. The encoded protein is involved in the phagocytosis of immune complexes and in the regulation of antibody production by B-cells. Variations in this gene may increase susceptibility to systemic lupus erythematosus (SLE). Several transcript variants encoding different isoforms have been found for this gene.</p> <p>Cellular Localization: Cell membrane, Single-pass type I membrane protein</p>
Molecular Weight:	34 kDa
Gene ID:	2213
Pathways:	Cellular Response to Molecule of Bacterial Origin , Regulation of Leukocyte Mediated Immunity , Production of Molecular Mediator of Immune Response , BCR Signaling

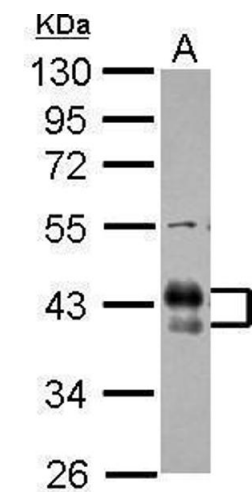
Application Details

Application Notes:	Suggested dilution Reference ICC/IF 1:100-1:1000* Western blot 1:500-1:3000* Not tested in other applications. *Optimal dilutions/concentrations should be determined by the researcher.Suggested dilutionReferenceICC/IF1:100-1:1000* Western blot1:500-1:3000*
Comment:	Positive Control: THP-1
Restrictions:	For Research Use only

Handling

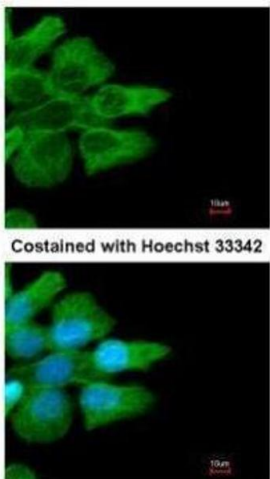
Format:	Liquid
Concentration:	1 mg/mL
Buffer:	1XPBS, 1 % BSA, 20 % Glycerol (pH 7). 0.01 % Thimerosal was added as a preservative.
Preservative:	Thimerosal (Merthiolate)
Precaution of Use:	This product contains Thimerosal (Merthiolate): a POISONOUS AND HAZARDOUS SUBSTANCE which should be handled by trained staff only.
Storage:	-20 °C
Storage Comment:	Keep as concentrated solution. Aliquot and store at -20°C or below. Avoid multiple freeze-thaw

cycles.



Western Blotting

Image 1. WB Image Sample (30 ug of whole cell lysate) A:
THP-1 10% SDS PAGE antibody diluted at 1:1000



Immunofluorescence

Image 2. ICC/IF Image Immunofluorescence analysis of
methanol-fixed A431, using CD32B, antibody at 1:500
dilution.