

Datasheet for ABIN2854682
anti-FHL1 antibody (C-Term)



[Go to Product page](#)

1 Image

Overview

Quantity:	100 µL
Target:	FHL1
Binding Specificity:	C-Term
Reactivity:	Human
Host:	Rabbit
Clonality:	Polyclonal
Conjugate:	This FHL1 antibody is un-conjugated
Application:	Western Blotting (WB)

Product Details

Immunogen:	Carrier-protein conjugated synthetic peptide encompassing a sequence within the C-terminus region of human FHL1. The exact sequence is proprietary.
Isotype:	IgG
Specificity:	Based on sequence homology, GTX100266 is expected to recognize isoform 1 (FHL1A), isoform 4, and isoform 5, but not isoform 2 (FHL1B) and isoform 3 (FHL1C) of human FHL1 (Uniprot Q13642).
Cross-Reactivity:	Human, Mouse
Characteristics:	Rabbit polyclonal antibody to FHL1 (four and a half LIM domains 1) FHL1 antibody
Purification:	Purified by antigen-affinity chromatography.

Target Details

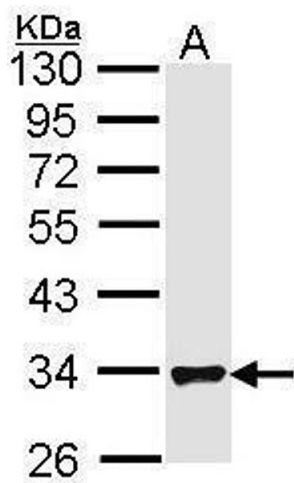
Target:	FHL1
Alternative Name:	four and a half LIM domains 1 (FHL1 Products)
Background:	LIM proteins, named for 'LIN11, ISL1, and MEC3,' are defined by the possession of a highly conserved double zinc finger motif called the LIM domain.[supplied by OMIM] Cellular Localization: Isoform 1: Cytoplasm , Isoform 3: Cytoplasm , Nucleus , Isoform 2: Nucleus , Cytoplasm , cytosol
Molecular Weight:	36 kDa
Gene ID:	2273
UniProt:	Q13642

Application Details

Application Notes:	WB: 1:500-1:3000. Optimal dilutions/concentrations should be determined by the researcher. Not tested in other applications.
Comment:	Positive Control: mouse muscle , mouse lung Validation: Orthogonal
Restrictions:	For Research Use only

Handling

Format:	Liquid
Concentration:	1 mg/mL
Buffer:	1XPBS (pH 7), 20 % Glycerol, 0.01 % Thimerosal
Preservative:	Thimerosal (Merthiolate)
Precaution of Use:	This product contains Thimerosal (Merthiolate): a POISONOUS AND HAZARDOUS SUBSTANCE which should be handled by trained staff only.
Storage:	4 °C,-20 °C
Storage Comment:	Store as concentrated solution. Centrifuge briefly prior to opening vial. For short-term storage (1-2 weeks), store at 4°C. For long-term storage, aliquot and store at -20°C or below. Avoid multiple freeze-thaw cycles.



Western Blotting

Image 1. WB Image Sample (30 ug of whole cell lysate) A:
Hela 10% SDS PAGE antibody diluted at 1:1000