

Datasheet for ABIN2854690
anti-GEM antibody (N-Term)

2 Images

[Go to Product page](#)

Overview

Quantity:	100 µL
Target:	GEM
Binding Specificity:	N-Term
Reactivity:	Human
Host:	Rabbit
Clonality:	Polyclonal
Conjugate:	This GEM antibody is un-conjugated
Application:	Western Blotting (WB), Immunohistochemistry (Paraffin-embedded Sections) (IHC (p))

Product Details

Immunogen:	Carrier-protein conjugated synthetic peptide encompassing a sequence within the N-terminus region of human GEM. The exact sequence is proprietary.
Isotype:	IgG
Cross-Reactivity:	Human
Characteristics:	Rabbit Polyclonal antibody to GEM (GTP binding protein overexpressed in skeletal muscle) GEM antibody [N1], N-term
Purification:	Purified by antigen-affinity chromatography.

Target Details

Target:	GEM
---------	-----

Target Details

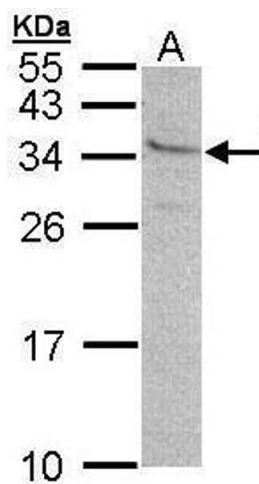
Alternative Name:	GTP binding protein overexpressed in skeletal muscle (GEM Products)
Background:	<p>The protein encoded by this gene belongs to the RAD/GEM family of GTP-binding proteins. It is associated with the inner face of the plasma membrane and could play a role as a regulatory protein in receptor-mediated signal transduction. Alternative splicing occurs at this locus and two transcript variants encoding the same protein have been identified.</p> <p>Cellular Localization: Cell membrane, Peripheral membrane protein, Cytoplasmic side</p>
Molecular Weight:	34 kDa
Gene ID:	2669
UniProt:	P55040

Application Details

Application Notes:	WB: 1:500-1:3000. IHC-P: 1:100-1:1000. Optimal dilutions/concentrations should be determined by the researcher. Not tested in other applications.
Comment:	Positive Control: 293T
Restrictions:	For Research Use only

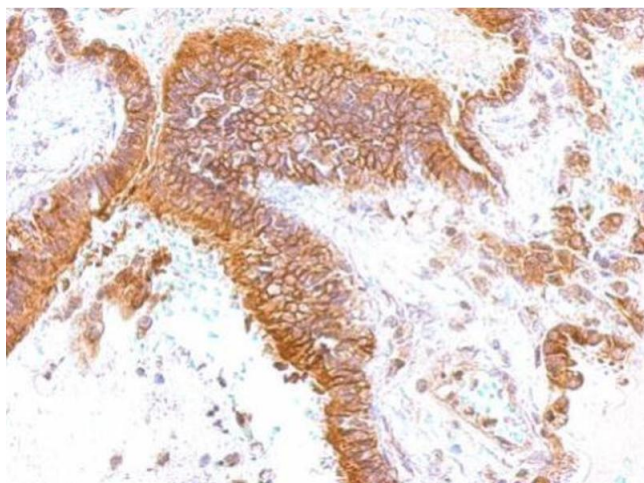
Handling

Format:	Liquid
Concentration:	1 mg/mL
Buffer:	1XPBS (pH 7), 20 % Glycerol, 0.01 % Thimerosal
Preservative:	Thimerosal (Merthiolate)
Precaution of Use:	This product contains Thimerosal (Merthiolate): a POISONOUS AND HAZARDOUS SUBSTANCE which should be handled by trained staff only.
Storage:	4 °C,-20 °C
Storage Comment:	Store as concentrated solution. Centrifuge briefly prior to opening vial. For short-term storage (1-2 weeks), store at 4°C. For long-term storage, aliquot and store at -20°C or below. Avoid multiple freeze-thaw cycles.



Western Blotting

Image 1. WB Image Sample (30 ug of whole cell lysate) A: 293T 12% SDS PAGE antibody diluted at 1:500



Immunohistochemistry

Image 2. IHC-P Image GEM antibody [N1], N-term detects GEM protein at membrane on human lung by immunohistochemical analysis. Sample: Paraffin-embedded lung. GEM antibody [N1], N-term, dilution: 1:500.