



[Go to Product page](#)

Datasheet for ABIN2854691
anti-Golgin A3 antibody (C-Term)

3 Images

Overview

Quantity:	100 µL
Target:	Golgin A3 (GOLGA3)
Binding Specificity:	C-Term
Reactivity:	Human
Host:	Rabbit
Clonality:	Polyclonal
Conjugate:	This Golgin A3 antibody is un-conjugated
Application:	Western Blotting (WB), Immunofluorescence (IF), Immunohistochemistry (Paraffin-embedded Sections) (IHC (p)), Immunocytochemistry (ICC)

Product Details

Immunogen:	Carrier-protein conjugated synthetic peptide encompassing a sequence within the C-terminus region of human GOLGA3. The exact sequence is proprietary.
Isotype:	IgG
Cross-Reactivity:	Human
Characteristics:	Rabbit Polyclonal antibody to GOLGA3 (golgin A3) GOLGA3 antibody [C3], C-term
Purification:	Purified by antigen-affinity chromatography.

Target Details

Target:	Golgin A3 (GOLGA3)
---------	--------------------

Target Details

Alternative Name:	golgin A3 (GOLGA3 Products)
Background:	<p>The Golgi apparatus, which participates in glycosylation and transport of proteins and lipids in the secretory pathway, consists of a series of stacked cisternae (flattened membrane sacs). Interactions between the Golgi and microtubules are thought to be important for the reorganization of the Golgi after it fragments during mitosis. This gene encodes a member of the golgin family of proteins which are localized to the Golgi. Its encoded protein has been postulated to play a role in nuclear transport and Golgi apparatus localization. Several alternatively spliced transcript variants of this gene have been described, but the full-length nature of these variants has not been determined.</p> <p>Cellular Localization: Cytoplasm , Golgi apparatus , Golgi stack membrane, Peripheral membrane protein</p>
Molecular Weight:	167 kDa
Gene ID:	2802
UniProt:	Q08378
Pathways:	SARS-CoV-2 Protein Interactome

Application Details

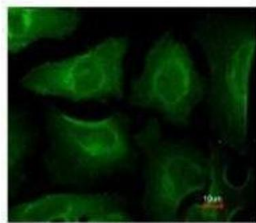
Application Notes:	WB: 1:500-1:3000. ICC/IF: 1:100-1:1000. IHC-P: 1:100-1:1000. Optimal dilutions/concentrations should be determined by the researcher. Not tested in other applications.
Restrictions:	For Research Use only

Handling

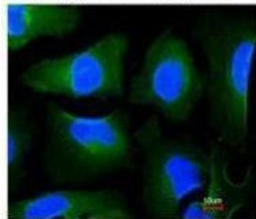
Format:	Liquid
Concentration:	1 mg/mL
Buffer:	0.1M Tris-Glycine (pH 7), 20 % Glycerol, 0.01 % Thimerosal
Preservative:	Thimerosal (Merthiolate)
Precaution of Use:	This product contains Thimerosal (Merthiolate): a POISONOUS AND HAZARDOUS SUBSTANCE which should be handled by trained staff only.
Storage:	4 °C,-20 °C
Storage Comment:	Store as concentrated solution. Centrifuge briefly prior to opening vial. For short-term storage

(1-2 weeks), store at 4°C. For long-term storage, aliquot and store at -20°C or below. Avoid multiple freeze-thaw cycles.

Validation report #104437 for Cleavage Under Targets and Release Using Nuclease (CUT&RUN)

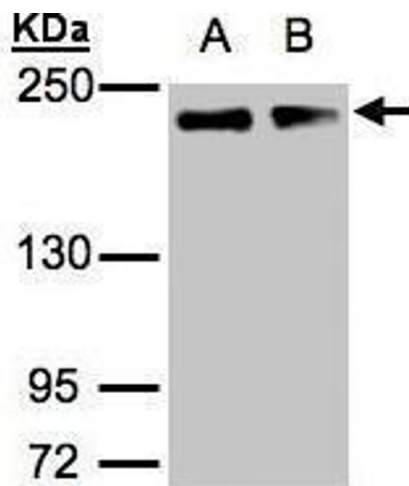


Merged with DNA probe



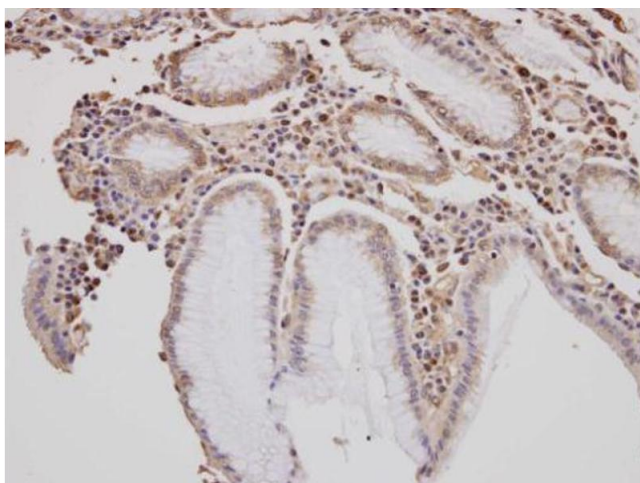
Immunofluorescence

Image 1. ICC/IF Image Immunofluorescence analysis of paraformaldehyde-fixed HeLa, using GOLGA3, antibody at 1:200 dilution.



Western Blotting

Image 2. WB Image Sample(30 µg of whole cell lysate) A:A431, B:H1299 5% SDS PAGE antibody diluted at 1:1000



Immunohistochemistry

Image 3. IHC-P Image Immunohistochemical analysis of paraffin-embedded human gastric tissue, using GOLGA3, antibody at 1:100 dilution.