

Datasheet for ABIN2854692

anti-14-3-3 sigma/SFN antibody (C-Term)

6 Images

[Go to Product page](#)

Overview

Quantity:	100 µL
Target:	14-3-3 sigma/SFN (SFN)
Binding Specificity:	C-Term
Reactivity:	Human
Host:	Rabbit
Clonality:	Polyclonal
Conjugate:	This 14-3-3 sigma/SFN antibody is un-conjugated
Application:	Western Blotting (WB), Immunofluorescence (IF), Immunohistochemistry (Paraffin-embedded Sections) (IHC (p)), Immunocytochemistry (ICC)

Product Details

Immunogen:	Carrier-protein conjugated synthetic peptide encompassing a sequence within the C-terminus region of human 14-3-3 sigma. The exact sequence is proprietary.
Isotype:	IgG
Cross-Reactivity:	Human, Mouse, Rat
Characteristics:	Rabbit Polyclonal antibody to 14-3-3 sigma (stratifin) 14-3-3 sigma antibody
Purification:	Purified by antigen-affinity chromatography.

Target Details

Target:	14-3-3 sigma/SFN (SFN)
---------	------------------------

Target Details

Alternative Name:	stratifin (SFN Products)
Background:	Adapter protein implicated in the regulation of a large spectrum of both general and specialized signaling pathway. Binds to a large number of partners, usually by recognition of a phosphoserine or phosphothreonine motif. Binding generally results in the modulation of the activity of the binding partner. When bound to KRT17, regulates protein synthesis and epithelial cell growth by stimulating Akt/mTOR pathway. p53-regulated inhibitor of G2/M progression. Cellular Localization: Cytoplasm , Nucleus , Secreted
Molecular Weight:	28 kDa
Gene ID:	2810
UniProt:	P31947
Pathways:	p53 Signaling , Myometrial Relaxation and Contraction

Application Details

Application Notes:	WB: 1:500-1:3000. ICC/IF: 1:100-1:1000. IHC-P: 1:100-1:1000. Optimal dilutions/concentrations should be determined by the researcher. Not tested in other applications.
Comment:	Positive Control: 293T , A431 , HeLa , HepG2 , Neuro2A , GL261 , PC-12 , A549 Validation: Orthogonal
Restrictions:	For Research Use only

Handling

Format:	Liquid
Concentration:	1 mg/mL
Buffer:	1XPBS (pH 7), 20 % Glycerol, 0.01 % Thimerosal
Preservative:	Thimerosal (Merthiolate)
Precaution of Use:	This product contains Thimerosal (Merthiolate): a POISONOUS AND HAZARDOUS SUBSTANCE which should be handled by trained staff only.
Storage:	4 °C, -20 °C
Storage Comment:	Store as concentrated solution. Centrifuge briefly prior to opening vial. For short-term storage (1-2 weeks), store at 4°C. For long-term storage, aliquot and store at -20°C or below. Avoid

multiple freeze-thaw cycles.

Images

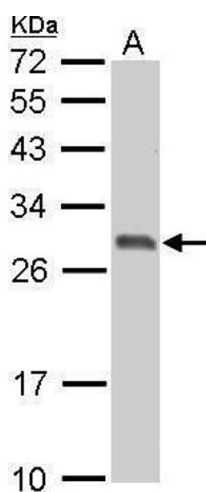
**Western Blotting**

Image 1. WB Image 14-3-3 sigma antibody detects SFN protein by Western blot analysis. A. 30 µg PC-12 whole cell lysate/extract 12 % SDS-PAGE 14-3-3 sigma antibody , dilution: 1:3000

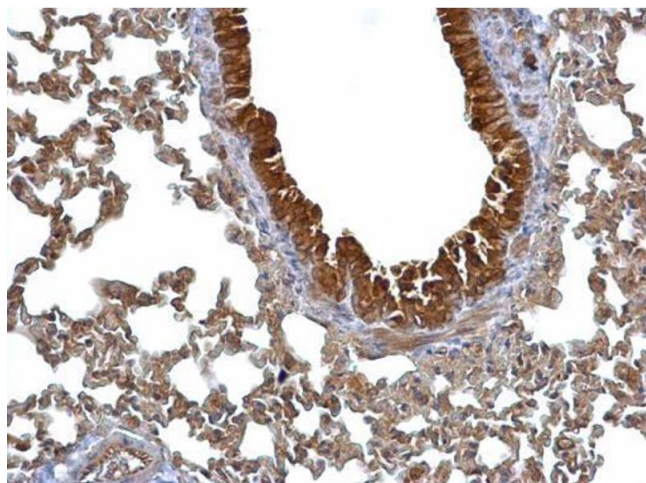
**Immunohistochemistry**

Image 2. IHC-P Image 14-3-3 sigma antibody detects 14-3-3 sigma protein at cytosol on mouse lung by immunohistochemical analysis. Sample: Paraffin-embedded mouse lung. 14-3-3 sigma antibody , dilution: 1:500.

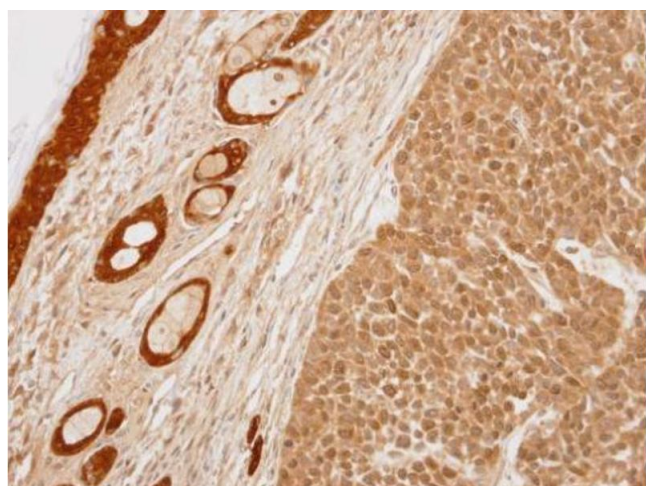
**Immunohistochemistry**

Image 3. IHC-P Image Immunohistochemical analysis of paraffin-embedded 59T xenograft, using 14-3-3 sigma, antibody at 1:100 dilution.

Please check the [product details page](#) for more images. Overall 6 images are available for ABIN2854692.