

Datasheet for ABIN2854694
anti-GPS1 antibody (C-Term)

7 Images

[Go to Product page](#)

Overview

Quantity:	100 µL
Target:	GPS1
Binding Specificity:	C-Term
Reactivity:	Human
Host:	Rabbit
Clonality:	Polyclonal
Conjugate:	This GPS1 antibody is un-conjugated
Application:	Western Blotting (WB), Immunofluorescence (IF), Immunohistochemistry (Paraffin-embedded Sections) (IHC (p)), Immunocytochemistry (ICC)

Product Details

Immunogen:	Carrier-protein conjugated synthetic peptide encompassing a sequence within the C-terminus region of human CSN1. The exact sequence is proprietary.
Isotype:	IgG
Cross-Reactivity:	Human, Mouse, Rat
Characteristics:	Rabbit Polyclonal antibody to CSN1 (G protein pathway suppressor 1) CSN1 antibody [C3], C-term
Purification:	Purified by antigen-affinity chromatography.

Target Details

Target:	GPS1
---------	------

Target Details

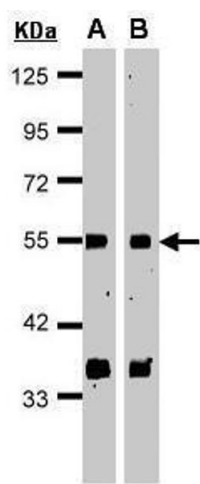
Alternative Name:	G protein pathway suppressor 1 (GPS1 Products)
Background:	<p>This gene is known to suppress G-protein and mitogen-activated signal transduction in mammalian cells. The encoded protein shares significant similarity with Arabidopsis FUS6, which is a regulator of light-mediated signal transduction in plant cells. Two alternatively spliced transcript variants encoding different isoforms have been found for this gene.</p> <p>Cellular Localization: Cytoplasm , Nucleus</p>
Molecular Weight:	56 kDa
Gene ID:	2873
UniProt:	Q13098
Pathways:	Cell Division Cycle

Application Details

Application Notes:	WB: 1:500-1:3000. ICC/IF: 1:100-1:1000. IHC-P: 1:100-1:1000. Optimal dilutions/concentrations should be determined by the researcher. Not tested in other applications.
Comment:	Positive Control: HeLaS3 , Molt-4 , 293T , A431 , HeLa , HepG2
Restrictions:	For Research Use only

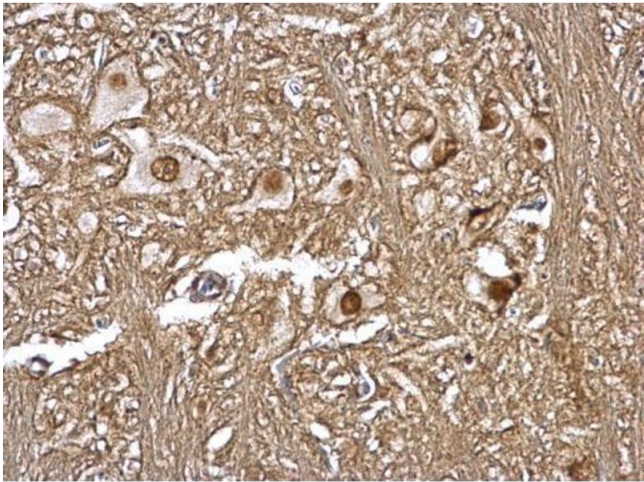
Handling

Format:	Liquid
Concentration:	1 mg/mL
Buffer:	1XPBS (pH 7), 20 % Glycerol, 0.01 % Thimerosal
Preservative:	Thimerosal (Merthiolate)
Precaution of Use:	This product contains Thimerosal (Merthiolate): a POISONOUS AND HAZARDOUS SUBSTANCE which should be handled by trained staff only.
Storage:	4 °C,-20 °C
Storage Comment:	Store as concentrated solution. Centrifuge briefly prior to opening vial. For short-term storage (1-2 weeks), store at 4°C. For long-term storage, aliquot and store at -20°C or below. Avoid multiple freeze-thaw cycles.



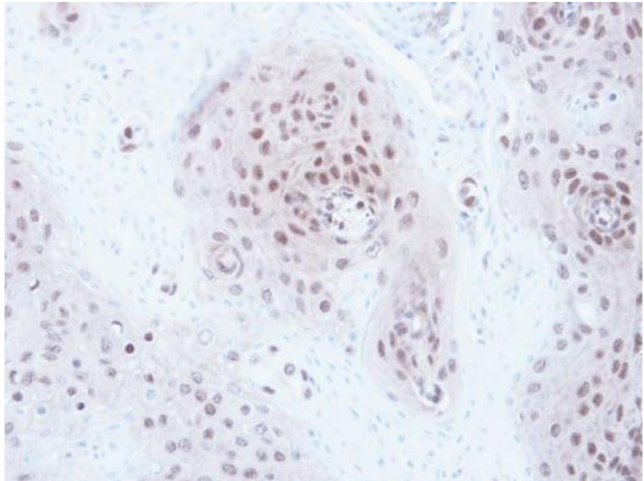
Western Blotting

Image 1. WB Image Sample(30 µg of whole cell lysate)
A:HeLa S3 , B:MOLT4 , 15% SDS PAGE antibody diluted at 1:1000



Immunohistochemistry

Image 2. IHC-P Image CSN1 antibody [C3], C-term detects CSN1 protein at nucleus on rat brain stem by immunohistochemical analysis. Sample: Paraffin-embedded rat brain stem. CSN1 antibody [C3], C-term , dilution: 1:500.



Immunohistochemistry

Image 3. IHC-P Image Immunohistochemical analysis of paraffin-embedded A549 xenograft, using CSN1, antibody at 1:100 dilution.

Please check the [product details page](#) for more images. Overall 7 images are available for ABIN2854694.