

Datasheet for ABIN2854695

anti-Glutathione Peroxidase 2 antibody (C-Term)[Go to Product page](#)

4 Images

Overview

Quantity:	100 µL
Target:	Glutathione Peroxidase 2 (GPX2)
Binding Specificity:	C-Term
Reactivity:	Human
Host:	Rabbit
Clonality:	Polyclonal
Conjugate:	This Glutathione Peroxidase 2 antibody is un-conjugated
Application:	Western Blotting (WB), Immunohistochemistry (Paraffin-embedded Sections) (IHC (p)), Immunofluorescence (IF), Immunocytochemistry (ICC), Immunoprecipitation (IP)

Product Details

Immunogen:	Carrier-protein conjugated synthetic peptide encompassing a sequence within the C-terminus region of human GPX2. The exact sequence is proprietary.
Isotype:	IgG
Cross-Reactivity:	Human, Mouse, Rat
Characteristics:	Rabbit Polyclonal antibody to GPX2 (glutathione peroxidase 2 (gastrointestinal)) GPX2 antibody [C1C3]
Purification:	Purified by antigen-affinity chromatography.
Grade:	KO Validated

Target Details

Target:	Glutathione Peroxidase 2 (GPX2)
Alternative Name:	glutathione peroxidase 2 (GPX2 Products)
Background:	<p>This gene is a member of the glutathione peroxidase family and encodes a selenium-dependent glutathione peroxidase that is one of two isoenzymes responsible for the majority of the glutathione-dependent hydrogen peroxide-reducing activity in the epithelium of the gastrointestinal tract. Studies in knockout mice indicate that mRNA expression levels respond to luminal microflora, suggesting a role of the ileal glutathione peroxidases in preventing inflammation in the GI tract.</p> <p>Cellular Localization: Cytoplasm</p>
Molecular Weight:	22 kDa
Gene ID:	2877
UniProt:	P18283
Pathways:	Thyroid Hormone Synthesis

Application Details

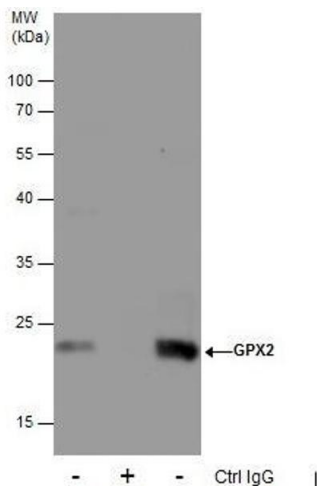
Application Notes:	WB: 1:500-1:10000. IHC-P: 1:100-1:1000. IP: 1:100-1:500. Optimal dilutions/concentrations should be determined by the researcher. Not tested in other applications.
Comment:	Validatio: KO/KD, Orthogonal
Restrictions:	For Research Use only

Handling

Format:	Liquid
Concentration:	1.39 mg/mL
Buffer:	1XPBS pH 7, 20 % Glycerol, 0.025 % ProClin 300
Preservative:	ProClin
Precaution of Use:	This product contains ProClin: a POISONOUS AND HAZARDOUS SUBSTANCE which should be handled by trained staff only.
Storage:	4 °C,-20 °C
Storage Comment:	Store as concentrated solution. Centrifuge briefly prior to opening vial. For short-term storage

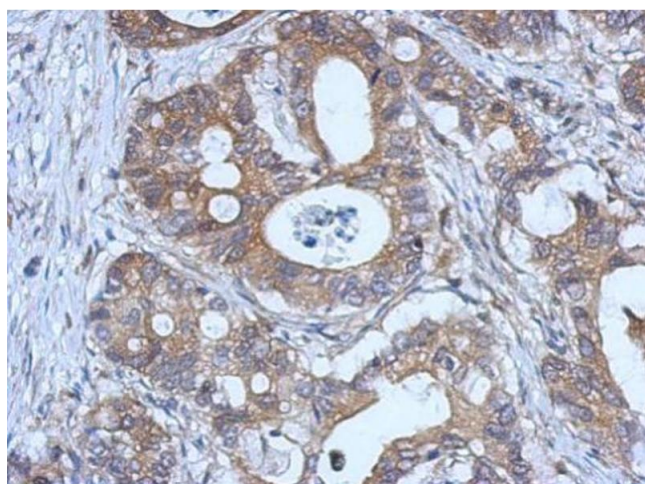
(1-2 weeks), store at 4°C. For long-term storage, aliquot and store at -20°C or below. Avoid multiple freeze-thaw cycles.

Validation report #104252 for Cleavage Under Targets and Release Using Nuclease (CUT&RUN)



Immunoprecipitation

Image 1. IP Image Immunoprecipitation of GPX2 protein from HepG2 whole cell extracts using 5 µg of GPX2 antibody [C1C3], Western blot analysis was performed using GPX2 antibody [C1C3], EasyBlot anti-Rabbit IgG was used as a secondary reagent.



Immunohistochemistry

Image 2. IHC-P Image Immunohistochemical analysis of paraffin-embedded human gastric cancer, using GPX2, antibody at 1:500 dilution.



Immunohistochemistry

Image 3. IHC-P Image Immunohistochemical analysis of paraffin-embedded mouse muscle, using GPX2, antibody at 1:500 dilution.

Please check the [product details page](#) for more images. Overall 4 images are available for ABIN2854695.