

Datasheet for ABIN2854697  
**anti-GRB2 antibody (C-Term)**

## 9 Images

[Go to Product page](#)

## Overview

Quantity:	100 µL
Target:	GRB2
Binding Specificity:	C-Term
Reactivity:	Human
Host:	Rabbit
Clonality:	Polyclonal
Conjugate:	This GRB2 antibody is un-conjugated
Application:	Western Blotting (WB), Immunohistochemistry (Paraffin-embedded Sections) (IHC (p)), Immunofluorescence (IF), Immunocytochemistry (ICC)

## Product Details

Immunogen:	Carrier-protein conjugated synthetic peptide encompassing a sequence within the C-terminus region of human GRB2. The exact sequence is proprietary.
Isotype:	IgG
Cross-Reactivity:	Human, Mouse, Rat
Characteristics:	Rabbit Polyclonal antibody to GRB2 (growth factor receptor-bound protein 2) GRB2 antibody
Purification:	Purified by antigen-affinity chromatography.
Grade:	KO Validated

## Target Details

Target:	GRB2
Alternative Name:	growth factor receptor bound protein 2 ( <a href="#">GRB2 Products</a> )
Background:	<p>The protein encoded by this gene binds the epidermal growth factor receptor and contains one SH2 domain and two SH3 domains. Its two SH3 domains direct complex formation with proline-rich regions of other proteins, and its SH2 domain binds tyrosine phosphorylated sequences. This gene is similar to the Sem5 gene of C.elegans, which is involved in the signal transduction pathway. Two alternatively spliced transcript variants encoding different isoforms have been found for this gene.</p> <p>Cellular Localization: Golgi apparatus</p>
Molecular Weight:	25 kDa
Gene ID:	2885
UniProt:	<a href="#">P62993</a>
Pathways:	<a href="#">RTK Signaling</a> , <a href="#">TCR Signaling</a> , <a href="#">Fc-epsilon Receptor Signaling Pathway</a> , <a href="#">EGFR Signaling Pathway</a> , <a href="#">Neurotrophin Signaling Pathway</a> , <a href="#">Regulation of Actin Filament Polymerization</a> , <a href="#">Hepatitis C</a> , <a href="#">Signaling Events mediated by VEGFR1 and VEGFR2</a> , <a href="#">Signaling of Hepatocyte Growth Factor Receptor</a> , <a href="#">EGFR Downregulation</a>

## Application Details

Application Notes:	WB: 1:500-1:3000. ICC/IF: 1:100-1:1000. IHC-P: 1:100-1:1000. Optimal dilutions/concentrations should be determined by the researcher. Not tested in other applications.
Comment:	Positive Control: NIH-3T3 , BCL-1 , 293T , A431 , HeLa , HepG2 Validation: KO/KD
Restrictions:	For Research Use only

## Handling

Format:	Liquid
Concentration:	1 mg/mL
Buffer:	1XPBS ( pH 7), 20 % Glycerol, 0.01 % Thimerosal
Preservative:	Thimerosal (Merthiolate)
Precaution of Use:	This product contains Thimerosal (Merthiolate): a POISONOUS AND HAZARDOUS SUBSTANCE

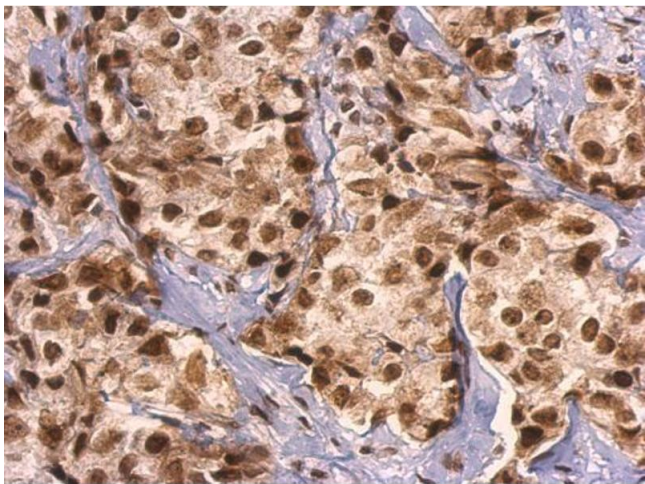
Handling

which should be handled by trained staff only.

Storage: 4 °C,-20 °C

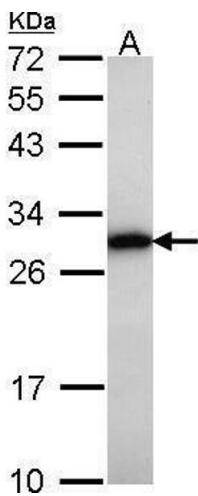
Storage Comment: Store as concentrated solution. Centrifuge briefly prior to opening vial. For short-term storage (1-2 weeks), store at 4°C. For long-term storage, aliquot and store at -20°C or below. Avoid multiple freeze-thaw cycles.

Validation report #104252 for Cleavage Under Targets and Release Using Nuclease (CUT&RUN)



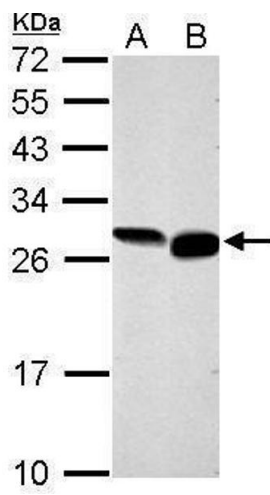
**Immunohistochemistry**

**Image 1.** IHC-P Image GRB2 antibody detects GRB2 protein at nucleus on human breast carcinoma by immunohistochemical analysis. Sample: Paraffin-embedded human breast carcinoma. GRB2 antibody , dilution: 1:500.



**Western Blotting**

**Image 2.** WB Image Sample (30 ug of whole cell lysate) A: Raji 12% SDS PAGE GRB2 antibody antibody diluted at 1:1000



**Western Blotting**

**Image 3.** WB Image Sample (30 ug of whole cell lysate) A: NIH-3T3 B: BCL-1 12% SDS PAGE antibody diluted at 1:1000

Please check the [product details page](#) for more images. Overall 9 images are available for ABIN2854697.