

Datasheet for ABIN2854698
anti-GRB7 antibody (N-Term)[Go to Product page](#)

1 Image

Overview

Quantity:	100 µL
Target:	GRB7
Binding Specificity:	N-Term
Reactivity:	Human
Host:	Rabbit
Clonality:	Polyclonal
Conjugate:	This GRB7 antibody is un-conjugated
Application:	Western Blotting (WB)

Product Details

Immunogen:	Carrier-protein conjugated synthetic peptide encompassing a sequence within the N-terminus region of human GRB7. The exact sequence is proprietary.
Isotype:	IgG
Cross-Reactivity:	Human
Characteristics:	Rabbit polyclonal antibody to GRB7 (growth factor receptor-bound protein 7) GRB7 antibody [N1], N-term
Purification:	Purified by antigen-affinity chromatography.

Target Details

Target:	GRB7
---------	------

Target Details

Alternative Name:	growth factor receptor bound protein 7 (GRB7 Products)
Background:	The product of this gene belongs to a small family of adapter proteins that are known to interact with a number of receptor tyrosine kinases and signaling molecules. This gene encodes a growth factor receptor-binding protein that interacts with epidermal growth factor receptor (EGFR) and ephrin receptors. The protein plays a role in the integrin signaling pathway and cell migration by binding with focal adhesion kinase (FAK). Alternative splicing results in multiple transcript variants encoding different isoforms, although the full-length nature of only two of the variants have been determined to date.
Molecular Weight:	60 kDa
Gene ID:	2886
UniProt:	Q14451
Pathways:	EGFR Signaling Pathway , Ribonucleoprotein Complex Subunit Organization

Application Details

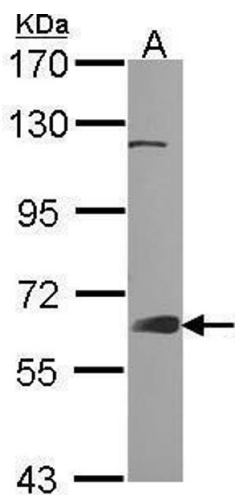
Application Notes:	WB: 1:500-1:3000. Optimal dilutions/concentrations should be determined by the researcher. Not tested in other applications.
Comment:	Positive Control: A431
Restrictions:	For Research Use only

Handling

Format:	Liquid
Concentration:	1 mg/mL
Buffer:	1XPBS (pH 7), 20 % Glycerol, 0.01 % Thimerosal
Preservative:	Thimerosal (Merthiolate)
Precaution of Use:	This product contains Thimerosal (Merthiolate): a POISONOUS AND HAZARDOUS SUBSTANCE which should be handled by trained staff only.
Storage:	4 °C, -20 °C
Storage Comment:	Store as concentrated solution. Centrifuge briefly prior to opening vial. For short-term storage (1-2 weeks), store at 4°C. For long-term storage, aliquot and store at -20°C or below. Avoid

multiple freeze-thaw cycles.

Validation report #104252 for Cleavage Under Targets and Release Using Nuclease (CUT&RUN)



Western Blotting

Image 1. WB Image Sample (30 ug of whole cell lysate) A: A431 , 7.5% SDS PAGE GRB7 antibody antibody diluted at 1:1000