

Datasheet for ABIN2854702

anti-CD235a/GYPA antibody (C-Term)**2** Images**1** Publication[Go to Product page](#)

Overview

Quantity:	100 µL
Target:	CD235a/GYPA (GYPA)
Binding Specificity:	C-Term
Reactivity:	Human
Host:	Rabbit
Clonality:	Polyclonal
Conjugate:	This CD235a/GYPA antibody is un-conjugated
Application:	Western Blotting (WB), Immunohistochemistry (Paraffin-embedded Sections) (IHC (p))

Product Details

Immunogen:	Carrier-protein conjugated synthetic peptide encompassing a sequence within the C-terminus region of human Glycophorin A. The exact sequence is proprietary.
Isotype:	IgG
Cross-Reactivity:	Human
Characteristics:	Rabbit Polyclonal antibody to Glycophorin A (glycophorin A (MNS blood group)) Glycophorin A antibody [C1C3]
Purification:	Purified by antigen-affinity chromatography.

Target Details

Target:	CD235a/GYPA (GYPA)
---------	--------------------

Target Details

Alternative Name:	glycophorin A (MNS blood group) (GYPA Products)
Background:	<p>Glycophorins A (GYPA) and B (GYPB) are major sialoglycoproteins of the human erythrocyte membrane which bear the antigenic determinants for the MN and Ss blood groups. In addition to the M or N and S or s antigens that commonly occur in all populations, about 40 related variant phenotypes have been identified. These variants include all the variants of the Miltenberger complex and several isoforms of Sta, as well as Dantu, Sat, He, Mg, and deletion variants Ena, S-s-U- and Mk. Most of the variants are the result of gene recombinations between GYPA and GYPB.</p> <p>Cellular Localization: Cell membrane, Single-pass type I membrane protein</p>
Molecular Weight:	16 kDa
Gene ID:	2993
UniProt:	P02724
Pathways:	Maintenance of Protein Location

Application Details

Application Notes:	WB: 1:500-1:3000. IHC-P: 1:100-1:1000. Optimal dilutions/concentrations should be determined by the researcher. Not tested in other applications.
Comment:	Positive Control: K562
Restrictions:	For Research Use only

Handling

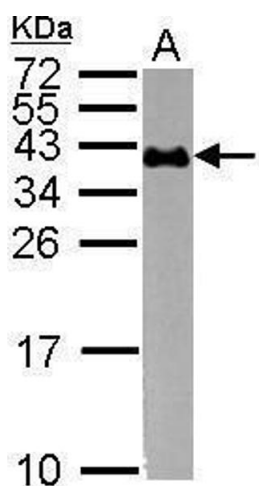
Format:	Liquid
Concentration:	1 mg/mL
Buffer:	1XPBS (pH 7), 20 % Glycerol, 0.01 % Thimerosal
Preservative:	Thimerosal (Merthiolate)
Precaution of Use:	This product contains Thimerosal (Merthiolate): a POISONOUS AND HAZARDOUS SUBSTANCE which should be handled by trained staff only.
Storage:	4 °C,-20 °C
Storage Comment:	Store as concentrated solution. Centrifuge briefly prior to opening vial. For short-term storage

(1-2 weeks), store at 4°C. For long-term storage, aliquot and store at -20°C or below. Avoid multiple freeze-thaw cycles.

Publications

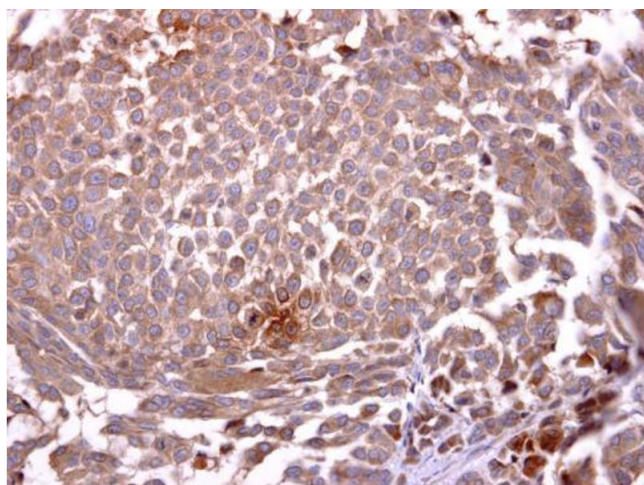
Product cited in: Chao, Wroblewski, Ilkayeva, Stevens, Bain, Meyer, Schenk, Martinez, Vergnes, Narkar, Drew, Hong, Boyadjian, Hevener, Evans, Reue, Spencer, Newgard, Tontonoz: "Skeletal muscle Nur77 expression enhances oxidative metabolism and substrate utilization." in: **Journal of lipid research**, Vol. 53, Issue 12, pp. 2610-9, (2012) ([PubMed](#)).

Validation report #104252 for Cleavage Under Targets and Release Using Nuclease (CUT&RUN)



Western Blotting

Image 1. WB Image Sample (30 ug of whole cell lysate) A: K562 15% SDS PAGE antibody diluted at 1:1000



Immunohistochemistry

Image 2. IHC-P Image Glycophorin A antibody [C1C3] detects Glycophorin A protein at cytosol on human lung carcinoma by immunohistochemical analysis. Sample: Glycophorin A antibody [C1C3], dilution: 1:250.