

Datasheet for ABIN2854705  
**anti-HCLS1 antibody (C-Term)**[Go to Product page](#)

## 3 Images

## Overview

Quantity:	100 µL
Target:	HCLS1
Binding Specificity:	C-Term
Reactivity:	Human
Host:	Rabbit
Clonality:	Polyclonal
Conjugate:	This HCLS1 antibody is un-conjugated
Application:	Western Blotting (WB), Immunohistochemistry (Paraffin-embedded Sections) (IHC (p))

## Product Details

Immunogen:	Carrier-protein conjugated synthetic peptide encompassing a sequence within the C-terminus region of human HCLS1. The exact sequence is proprietary.
Isotype:	IgG
Cross-Reactivity:	Human, Mouse
Characteristics:	Rabbit Polyclonal antibody to HCLS1 (hematopoietic cell-specific Lyn substrate 1) HCLS1 antibody [C3], C-term
Purification:	Purified by antigen-affinity chromatography.

## Target Details

Target:	HCLS1
---------	-------

## Target Details

Alternative Name:	hematopoietic cell-specific Lyn substrate 1 ( <a href="#">HCLS1 Products</a> )
Background:	<p>Substrate of the antigen receptor-coupled tyrosine kinase. Plays a role in antigen receptor signaling for both clonal expansion and deletion in lymphoid cells. May also be involved in the regulation of gene expression.</p> <p>Cellular Localization: Membrane, Peripheral membrane protein (Probable) , Cytoplasm (Probable) , Mitochondrion</p>
Molecular Weight:	54 kDa
Gene ID:	3059
UniProt:	<a href="#">P14317</a>
Pathways:	<a href="#">Fc-epsilon Receptor Signaling Pathway</a> , <a href="#">EGFR Signaling Pathway</a> , <a href="#">Neurotrophin Signaling Pathway</a> , <a href="#">Regulation of Actin Filament Polymerization</a> , <a href="#">Myometrial Relaxation and Contraction</a> , <a href="#">Maintenance of Protein Location</a>

## Application Details

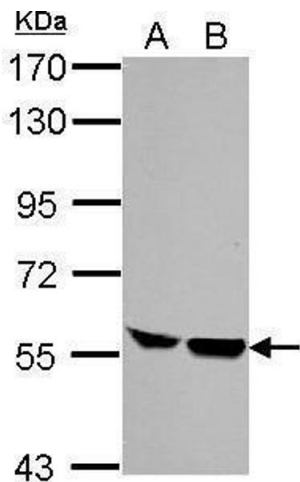
Application Notes:	WB: 1:5000-1:20000. IHC-P: 1:100-1:1000. Optimal dilutions/concentrations should be determined by the researcher. Not tested in other applications.
Comment:	Positive Control: Jurkat , HL-60 , NIH-3T3 , JC
Restrictions:	For Research Use only

## Handling

Format:	Liquid
Concentration:	1 mg/mL
Buffer:	1XPBS ( pH 7), 20 % Glycerol, 0.01 % Thimerosal
Preservative:	Thimerosal (Merthiolate)
Precaution of Use:	This product contains Thimerosal (Merthiolate): a POISONOUS AND HAZARDOUS SUBSTANCE which should be handled by trained staff only.
Storage:	4 °C, -20 °C
Storage Comment:	Store as concentrated solution. Centrifuge briefly prior to opening vial. For short-term storage (1-2 weeks), store at 4°C. For long-term storage, aliquot and store at -20°C or below. Avoid

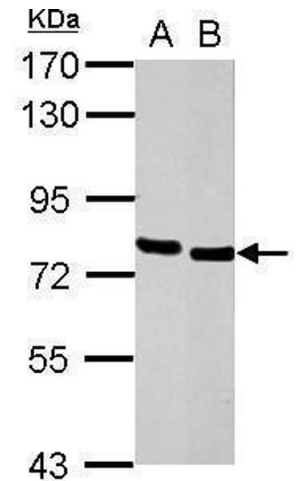
multiple freeze-thaw cycles.

Validation report #104252 for Cleavage Under Targets and Release Using Nuclease (CUT&RUN)



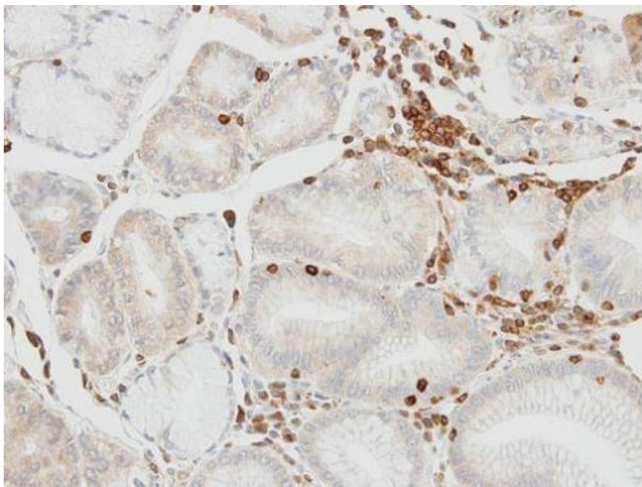
Western Blotting

**Image 1.** WB Image Sample (30 ug of whole cell lysate) A: NIH-3T3 B: JC 7.5% SDS PAGE antibody diluted at 1:5000



Western Blotting

**Image 2.** WB Image Sample (30 ug of whole cell lysate) A: Jurkat B: HL-60 7.5% SDS PAGE antibody diluted at 1:10000



Immunohistochemistry

**Image 3.** IHC-P Image Immunohistochemical analysis of paraffin-embedded human lymphocytes in gastric epithelium, using HCLs1, antibody at 1:100 dilution.