

Datasheet for ABIN2854709

**anti-beta Actin antibody (N-Term)**

6 Images

4 Publications

[Go to Product page](#)

## Overview

Quantity:	100 µL
Target:	beta Actin (ACTB)
Binding Specificity:	N-Term
Reactivity:	Human
Host:	Rabbit
Clonality:	Polyclonal
Conjugate:	This beta Actin antibody is un-conjugated
Application:	Western Blotting (WB), Immunofluorescence (IF), Immunohistochemistry (Paraffin-embedded Sections) (IHC (p)), Immunocytochemistry (ICC)

## Product Details

Immunogen:	Carrier-protein conjugated synthetic peptide encompassing a sequence within the N-terminus region of human beta Actin. The exact sequence is proprietary.
Isotype:	IgG
Cross-Reactivity:	Cat, Dog, Drosophila melanogaster, Human, Mouse
Characteristics:	Rabbit Polyclonal antibody to beta Actin (actin, beta) beta Actin antibody
Purification:	Purified by antigen-affinity chromatography.
Grade:	KO Validated

## Target Details

Target:	beta Actin (ACTB)
Alternative Name:	actin beta ( <a href="#">ACTB Products</a> )
Background:	<p>This gene encodes one of six different actin proteins. Actins are highly conserved proteins that are involved in cell motility, structure, and integrity. This actin is a major constituent of the contractile apparatus and one of the two nonmuscle cytoskeletal actins.</p> <p>Cellular Localization: Cytoplasm , cytoskeleton</p>
Molecular Weight:	42 kDa
Gene ID:	60
UniProt:	<a href="#">P60709</a>
Pathways:	<a href="#">Myometrial Relaxation and Contraction</a> , <a href="#">Cell-Cell Junction Organization</a> , <a href="#">Maintenance of Protein Location</a> , <a href="#">Phototransduction</a>

## Application Details

Application Notes:	WB: 1:500-1:3000. ICC/IF: 1:100-1:1000. IHC-P: 1:100-1:1000. Optimal dilutions/concentrations should be determined by the researcher. Not tested in other applications.
Comment:	<p>Positive Control: NIH-3T3 , Raji , 293T</p> <p>Validation: KO/KD</p>
Restrictions:	For Research Use only

## Handling

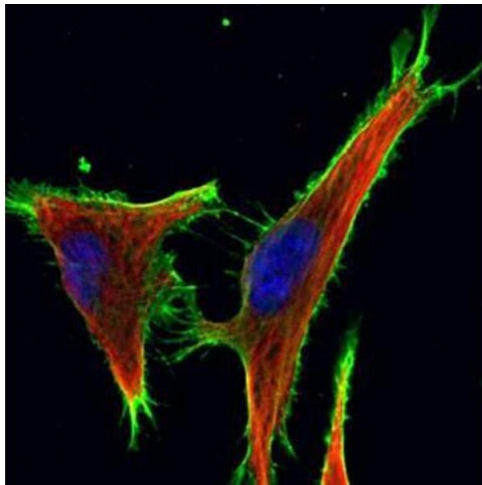
Format:	Liquid
Concentration:	1.16 mg/mL
Buffer:	1XPBS ( pH 7), 20 % Glycerol, 0.025 % ProClin 300
Preservative:	ProClin
Precaution of Use:	This product contains ProClin: a POISONOUS AND HAZARDOUS SUBSTANCE which should be handled by trained staff only.
Storage:	4 °C,-20 °C
Storage Comment:	Store as concentrated solution. Centrifuge briefly prior to opening vial. For short-term storage (1-2 weeks), store at 4°C. For long-term storage, aliquot and store at -20°C or below. Avoid

multiple freeze-thaw cycles.

## Publications

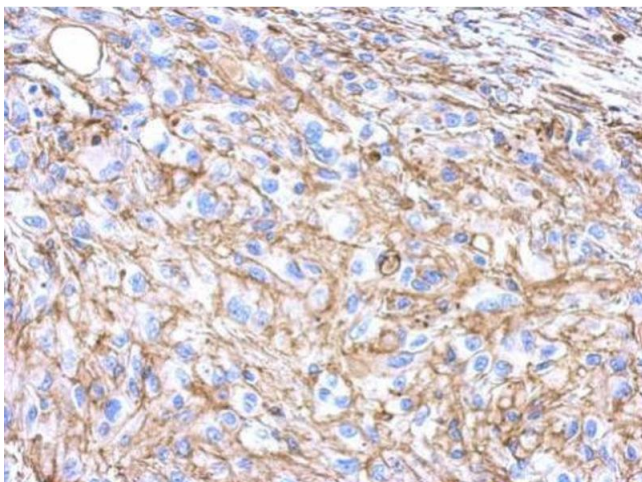
Product cited in: Ochiai, Hayashi, Umeda, Yoshimura, Harada, Shimizu, Nakano, Saitoh, Liu, Yamamoto, Okamura, Ohkawa, Kimura, Nikaido: "Genome-wide kinetic properties of transcriptional bursting in mouse embryonic stem cells." in: **Science advances**, Vol. 6, Issue 25, pp. eaaz6699, (2020) ([PubMed](#)).

## Images



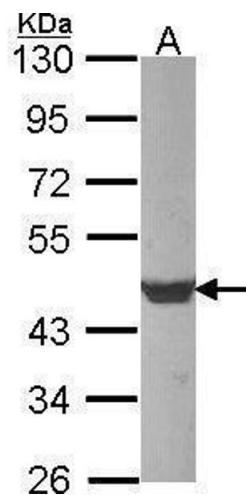
### Immunofluorescence

**Image 1.** ICC/IF Image Confocal immunofluorescence analysis (Olympus FV10i) of methanol-fixed HeLa, using beta Actin, antibody (Green) at 1:1000 dilution. Alpha-tubulin filaments were labeled with (Red) at 1:2500.



### Immunohistochemistry

**Image 2.** IHC-P Image Immunohistochemical analysis of paraffin-embedded U373 xenograft, using beta Actin, antibody at 1:500 dilution.



**Western Blotting**

**Image 3.** WB Image Sample (30 ug of whole cell lysate) A: Raji 10% SDS PAGE Beta-actin antibody antibody diluted at 1:1000

Please check the [product details page](#) for more images. Overall 6 images are available for ABIN2854709.