

Datasheet for ABIN2854714  
**anti-VIPR2 antibody (C-Term)**



[Go to Product page](#)

1 Image

## Overview

Quantity:	100 µL
Target:	VIPR2
Binding Specificity:	C-Term
Reactivity:	Human
Host:	Rabbit
Clonality:	Polyclonal
Conjugate:	This VIPR2 antibody is un-conjugated
Application:	Western Blotting (WB)

## Product Details

Immunogen:	Carrier-protein conjugated synthetic peptide encompassing a sequence within the C-terminus region of human VPAC2. The exact sequence is proprietary.
Isotype:	IgG
Cross-Reactivity:	Human
Characteristics:	Rabbit polyclonal antibody to VPAC2 (vasoactive intestinal peptide receptor 2) VPAC2 antibody
Purification:	Purified by antigen-affinity chromatography.

## Target Details

Target:	VIPR2
---------	-------

## Target Details

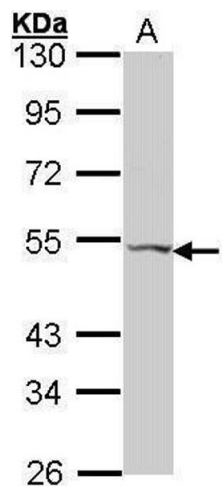
Alternative Name:	vasoactive intestinal peptide receptor 2 ( <a href="#">VIPR2 Products</a> )
Background:	Vasoactive intestinal peptide (VIP, MIM 192320) and pituitary adenylate cyclase activating polypeptide (PACAP, MIM 102980) are homologous peptides that function as neurotransmitters and neuroendocrine hormones. While the receptors for VIP and PACAP share homology, they differ in their substrate specificities and expression patterns. See VIPR1 (MIM 192321) and ADCYAP1R1(MIM 102981).[supplied by OMIM]  Cellular Localization: Cell membrane, Multi-pass membrane protein
Molecular Weight:	49 kDa
Gene ID:	7434
UniProt:	<a href="#">P41587</a>
Pathways:	<a href="#">cAMP Metabolic Process</a>

## Application Details

Application Notes:	WB: 1:500-1:3000. Optimal dilutions/concentrations should be determined by the researcher. Not tested in other applications.
Comment:	Positive Control: HeLa
Restrictions:	For Research Use only

## Handling

Format:	Liquid
Concentration:	1 mg/mL
Buffer:	1XPBS ( pH 7), 20 % Glycerol, 0.01 % Thimerosal
Preservative:	Thimerosal (Merthiolate)
Precaution of Use:	This product contains Thimerosal (Merthiolate): a POISONOUS AND HAZARDOUS SUBSTANCE which should be handled by trained staff only.
Storage:	4 °C,-20 °C
Storage Comment:	Store as concentrated solution. Centrifuge briefly prior to opening vial. For short-term storage (1-2 weeks), store at 4°C. For long-term storage, aliquot and store at -20°C or below. Avoid multiple freeze-thaw cycles.



Western Blotting

**Image 1.** WB Image Sample (30 ug of whole cell lysate) A:  
Hela 10% SDS PAGE antibody diluted at 1:1000