



Datasheet for ABIN2854719
anti-CCR3 antibody (C-Term)



[Go to Product page](#)

3 Images

Overview

Quantity:	100 µL
Target:	CCR3
Binding Specificity:	C-Term
Reactivity:	Human
Host:	Rabbit
Clonality:	Polyclonal
Conjugate:	This CCR3 antibody is un-conjugated
Application:	Western Blotting (WB), Immunohistochemistry (Paraffin-embedded Sections) (IHC (p))

Product Details

Immunogen:	Carrier-protein conjugated synthetic peptide encompassing a sequence within the C-terminus region of human CCR3. The exact sequence is proprietary.
Isotype:	IgG
Cross-Reactivity:	Human
Characteristics:	Rabbit Polyclonal antibody to CCR3 (chemokine (C-C motif) receptor 3) CCR3 antibody [C2C3], C-term
Purification:	Purified by antigen-affinity chromatography.

Target Details

Target:	CCR3
---------	------

Target Details

Alternative Name: C-C motif chemokine receptor 3 ([CCR3 Products](#))

Background: The protein encoded by this gene is a receptor for C-C type chemokines. It belongs to family 1 of the G protein-coupled receptors. This receptor binds and responds to a variety of chemokines, including eotaxin (CCL11), eotaxin-3 (CCL26), MCP-3 (CCL7), MCP-4 (CCL13), and RANTES (CCL5). It is highly expressed in eosinophils and basophils, and is also detected in TH1 and TH2 cells, as well as in airway epithelial cells. This receptor may contribute to the accumulation and activation of eosinophils and other inflammatory cells in the allergic airway. It is also known to be an entry co-receptor for HIV-1. This gene and seven other chemokine receptor genes form a chemokine receptor gene cluster on the chromosomal region 3p21. Alternatively spliced transcript variants encoding the same protein have been described.

Cellular Localization: Cell membrane

Molecular Weight: 41 kDa

Gene ID: 1232

UniProt: [P51677](#)

Application Details

Application Notes: WB: 1:500-1:3000. IHC-P: 1:100-1:1000. Optimal dilutions/concentrations should be determined by the researcher. Not tested in other applications.

Comment: Positive Control: K562

Restrictions: For Research Use only

Handling

Format: Liquid

Concentration: 1 mg/mL

Buffer: 1XPBS (pH 7), 20 % Glycerol, 0.01 % Thimerosal

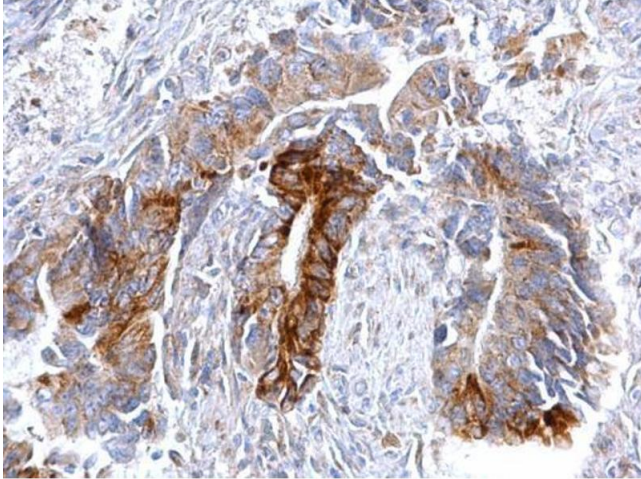
Preservative: Thimerosal (Merthiolate)

Precaution of Use: This product contains Thimerosal (Merthiolate): a POISONOUS AND HAZARDOUS SUBSTANCE which should be handled by trained staff only.

Storage: 4 °C,-20 °C

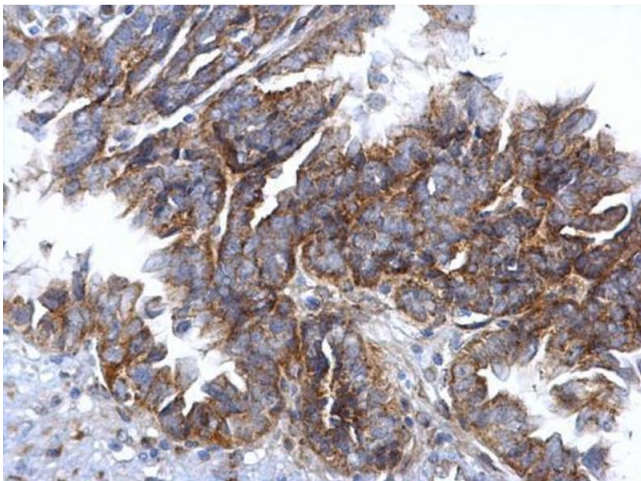
Storage Comment: Store as concentrated solution. Centrifuge briefly prior to opening vial. For short-term storage

(1-2 weeks), store at 4°C. For long-term storage, aliquot and store at -20°C or below. Avoid multiple freeze-thaw cycles.



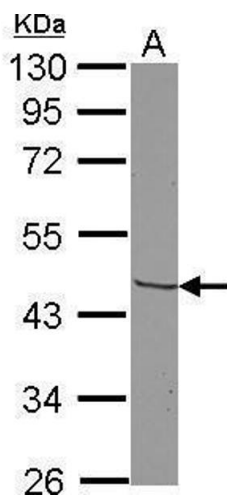
Immunohistochemistry

Image 1. IHC-P Image CCR3 antibody [C2C3], C-term detects CCR3 protein at cytosol on human colon carcinoma by immunohistochemical analysis. Sample: Paraffin-embedded human colon carcinoma. CCR3 antibody [C2C3], C-term , dilution: 1:500.



Immunohistochemistry

Image 2. IHC-P Image CCR3 antibody [C2C3], C-term detects CCR3 protein at cytosol on human ovarian carcinoma by immunohistochemical analysis. Sample: Paraffin-embedded human ovarian carcinoma. CCR3 antibody [C2C3], C-term , dilution: 1:500.



Western Blotting

Image 3. WB Image Sample (30 ug of whole cell lysate) A: K562 10% SDS PAGE antibody diluted at 1:1000