

Datasheet for ABIN2854720
anti-CCR8 antibody (C-Term)

3 Images

[Go to Product page](#)

Overview

Quantity:	100 µL
Target:	CCR8
Binding Specificity:	C-Term
Reactivity:	Human
Host:	Rabbit
Clonality:	Polyclonal
Conjugate:	This CCR8 antibody is un-conjugated
Application:	Western Blotting (WB), Immunohistochemistry (Paraffin-embedded Sections) (IHC (p))

Product Details

Immunogen:	Carrier-protein conjugated synthetic peptide encompassing a sequence within the C-terminus region of human CCR8. The exact sequence is proprietary.
Isotype:	IgG
Cross-Reactivity:	Human
Characteristics:	Rabbit Polyclonal antibody to CCR8 (chemokine (C-C motif) receptor 8) CCR8 antibody
Purification:	Purified by antigen-affinity chromatography.

Target Details

Target:	CCR8
---------	------

Target Details

Alternative Name:	C-C motif chemokine receptor 8 (CCR8 Products)
Background:	<p>This gene encodes a member of the beta chemokine receptor family, which is predicted to be a seven transmembrane protein similar to G protein-coupled receptors. Chemokines and their receptors are important for the migration of various cell types into the inflammatory sites. This receptor protein preferentially expresses in the thymus. I-309, thymus activation-regulated cytokine (TARC) and macrophage inflammatory protein-1 beta (MIP-1 beta) have been identified as ligands of this receptor. Studies of this receptor and its ligands suggested its role in regulation of monocyte chemotaxis and thymic cell apoptosis. More specifically, this receptor may contribute to the proper positioning of activated T cells within the antigenic challenge sites and specialized areas of lymphoid tissues. This gene is located at the chemokine receptor gene cluster region.</p> <p>Cellular Localization: Cell membrane</p>
Molecular Weight:	41 kDa
Gene ID:	1237
UniProt:	P51685

Application Details

Application Notes:	WB: 1:500-1:3000. IHC-P: 1:100-1:1000. Optimal dilutions/concentrations should be determined by the researcher. Not tested in other applications.
Comment:	Positive Control: K562 Validation: Orthogonal
Restrictions:	For Research Use only

Handling

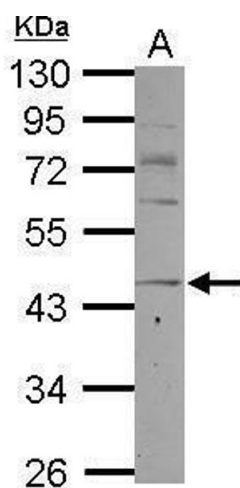
Format:	Liquid
Concentration:	1 mg/mL
Buffer:	1XPBS (pH 7), 20 % Glycerol, 0.01 % Thimerosal
Preservative:	Thimerosal (Merthiolate)
Precaution of Use:	This product contains Thimerosal (Merthiolate): a POISONOUS AND HAZARDOUS SUBSTANCE which should be handled by trained staff only.

Handling

Storage: 4 °C, -20 °C

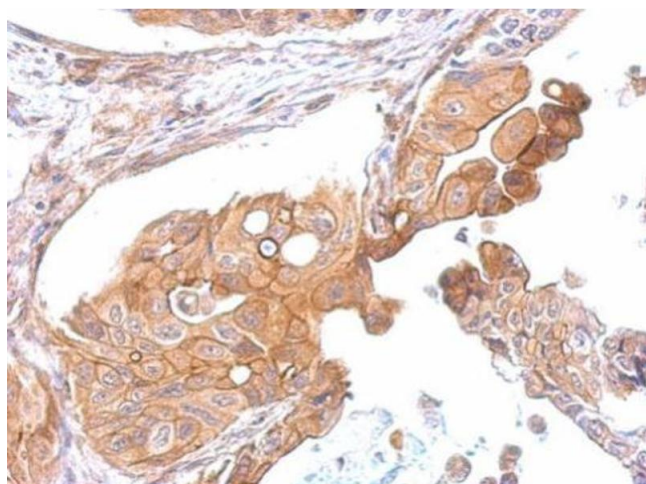
Storage Comment: Store as concentrated solution. Centrifuge briefly prior to opening vial. For short-term storage (1-2 weeks), store at 4°C. For long-term storage, aliquot and store at -20°C or below. Avoid multiple freeze-thaw cycles.

Validation report #104426 for Immunohistochemistry (IHC)



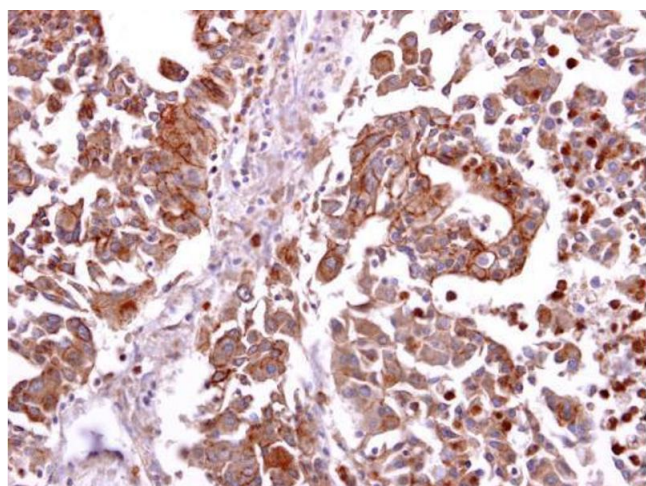
Western Blotting

Image 1. WB Image Sample (30 ug of whole cell lysate) A: K562 10% SDS PAGE antibody diluted at 1:1000



Immunohistochemistry

Image 2. IHC-P Image CCR8 antibody detects CCR8 protein at membrane on human gastric cancer by immunohistochemical analysis. Sample: Paraffin-embedded gastric cancer. CCR8 antibody, dilution: 1:500.



Immunohistochemistry

Image 3. IHC-P Image CCR8 antibody detects CCR8 protein at cytosol and membrane on human hepatoma by immunohistochemical analysis. Sample: CCR8 antibody, dilution: 1:250.