



[Go to Product page](#)

Datasheet for ABIN2854728
anti-EDNRB antibody (N-Term)

3 Images

Overview

Quantity:	100 µL
Target:	EDNRB
Binding Specificity:	N-Term
Reactivity:	Rat
Host:	Rabbit
Clonality:	Polyclonal
Conjugate:	This EDNRB antibody is un-conjugated
Application:	Western Blotting (WB), Immunohistochemistry (Paraffin-embedded Sections) (IHC (p))

Product Details

Immunogen:	Carrier-protein conjugated synthetic peptide encompassing a sequence within the N-terminus region of rat Endothelin B Receptor. The exact sequence is proprietary.
Isotype:	IgG
Cross-Reactivity:	Human, Mouse, Rat
Characteristics:	Rabbit Polyclonal antibody to Endothelin B Receptor (endothelin receptor type B) Endothelin B Receptor antibody
Purification:	Purified by antigen-affinity chromatography.

Target Details

Target:	EDNRB
---------	-------

Target Details

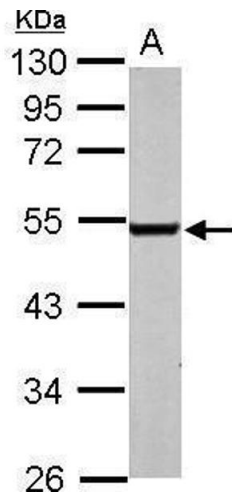
Alternative Name:	endothelin receptor type B (EDNRB Products)
Background:	Non-specific receptor for endothelin 1, 2, and 3. Mediates its action by association with G proteins that activate a phosphatidylinositol-calcium second messenger system. Cellular Localization: Cell membrane
Molecular Weight:	49 kDa
Gene ID:	50672
UniProt:	P21451
Pathways:	Cellular Response to Molecule of Bacterial Origin, cAMP Metabolic Process

Application Details

Application Notes:	WB: 1:500-1:3000. IHC-P: 1:100-1:1000. Optimal dilutions/concentrations should be determined by the researcher. Not tested in other applications.
Restrictions:	For Research Use only

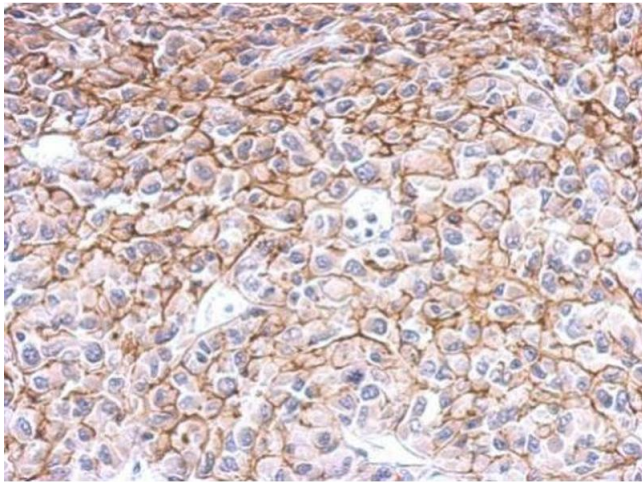
Handling

Format:	Liquid
Concentration:	1 mg/mL
Buffer:	1XPBS (pH 7), 50 % Glycerol, 0.01 % Thimerosal
Preservative:	Thimerosal (Merthiolate)
Precaution of Use:	This product contains Thimerosal (Merthiolate): a POISONOUS AND HAZARDOUS SUBSTANCE which should be handled by trained staff only.
Storage:	4 °C,-20 °C
Storage Comment:	Store as concentrated solution. Centrifuge briefly prior to opening vial. For short-term storage (1-2 weeks), store at 4°C. For long-term storage, aliquot and store at -20°C or below. Avoid multiple freeze-thaw cycles.



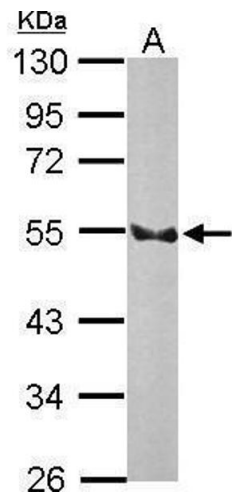
Western Blotting

Image 1. WB Image Sample (50 ug of whole cell lysate) A: mouse brain 10% SDS PAGE antibody diluted at 1:3000



Immunohistochemistry

Image 2. IHC-P Image Endothelin B Receptor antibody detects Ednrb protein at membrane on U87 xenograft by immunohistochemical analysis. Sample: Paraffin-embedded U87 xenograft. Endothelin B Receptor antibody, dilution: 1:500.



Western Blotting

Image 3. WB Image Sample (50 ug of whole cell lysate) A: Rat brain 10% SDS PAGE antibody diluted at 1:3000