

Datasheet for ABIN2854729
anti-FZD10 antibody (N-Term)[Go to Product page](#)

2 Images

Overview

Quantity:	100 µL
Target:	FZD10
Binding Specificity:	N-Term
Reactivity:	Human, Mouse
Host:	Rabbit
Clonality:	Polyclonal
Conjugate:	This FZD10 antibody is un-conjugated
Application:	Western Blotting (WB)

Product Details

Immunogen:	Carrier-protein conjugated synthetic peptide encompassing a sequence within the N-terminus region of human Frizzled 10. The exact sequence is proprietary.
Isotype:	IgG
Cross-Reactivity:	Cow (Bovine)
Cross-Reactivity (Details):	Bovine (92 %)
Characteristics:	Rabbit Polyclonal antibody to Frizzled 10 (frizzled-10) Frizzled 10 antibody
Purification:	Purified by antigen-affinity chromatography.

Target Details

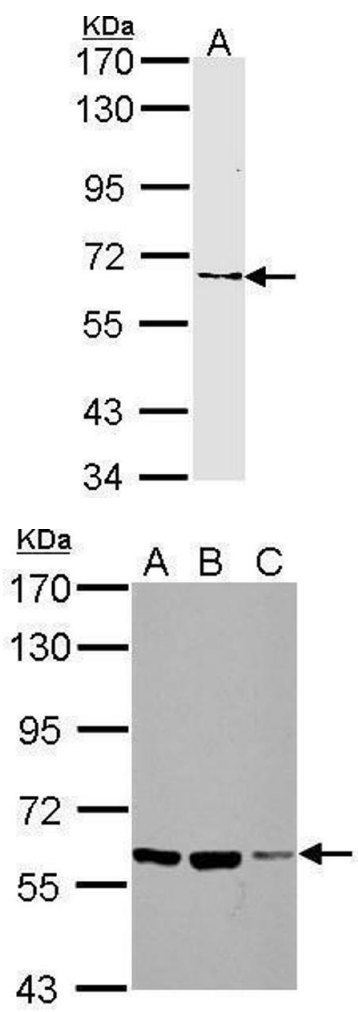
Target:	FZD10
Alternative Name:	Frizzled 10 (FZD10 Products)
Background:	<p>This gene is a member of the frizzled gene family. Members of this family encode 7-transmembrane domain proteins that are receptors for the Wingless type MMTV integration site family of signaling proteins. Most frizzled receptors are coupled to the beta-catenin canonical signaling pathway. Using array analysis, expression of this intronless gene is significantly up-regulated in two cases of primary colon cancer.</p> <p>Cellular Localization: Membrane, Multi-pass membrane protein</p>
Molecular Weight:	65 kDa
Gene ID:	11211
Pathways:	WNT Signaling

Application Details

Application Notes:	<p>Suggested dilution Reference Western blot 1:500-1:3000* Not tested in other applications.</p> <p>*Optimal dilutions/concentrations should be determined by the researcher.Suggested dilutionReferenceWestern blot1:500-1:3000*</p>
Comment:	Positive Control: H1299 , NIH-3T3 , JC , BCL-1
Restrictions:	For Research Use only

Handling

Format:	Liquid
Concentration:	1 mg/mL
Buffer:	1XPBS, 50 % Glycerol (pH 7). 0.01 % Thimerosal was added as a preservative.
Preservative:	Thimerosal (Merthiolate)
Precaution of Use:	This product contains Thimerosal (Merthiolate): a POISONOUS AND HAZARDOUS SUBSTANCE which should be handled by trained staff only.
Storage:	-20 °C
Storage Comment:	Keep as concentrated solution. Aliquot and store at -20°C or below. Avoid multiple freeze-thaw cycles.



Western Blotting

Image 1. WB Image Sample (30 ug of whole cell lysate) A: H1299 7.5% SDS PAGE frizzled 10(CD350) antibody antibody diluted at 1:1000

Western Blotting

Image 2. WB Image Sample (30 ug of whole cell lysate) A: NIH-3T3 B: JC C: BCL-1 7.5% SDS PAGE antibody diluted at 1:1000