

Datasheet for ABIN2854734
anti-GPR55 antibody (C-Term)[Go to Product page](#)

1 Image

Overview

Quantity:	100 µL
Target:	GPR55
Binding Specificity:	C-Term
Reactivity:	Human
Host:	Rabbit
Clonality:	Polyclonal
Conjugate:	This GPR55 antibody is un-conjugated
Application:	Immunohistochemistry (Paraffin-embedded Sections) (IHC (p))

Product Details

Immunogen:	Carrier-protein conjugated synthetic peptide encompassing a sequence within the C-terminus region of human GPR55. The exact sequence is proprietary.
Isotype:	IgG
Cross-Reactivity:	Human
Characteristics:	Rabbit polyclonal antibody to GPR55 (G protein-coupled receptor 55) GPR55 antibody [C2C3], C-term
Purification:	Purified by antigen-affinity chromatography.

Target Details

Target:	GPR55
---------	-------

Target Details

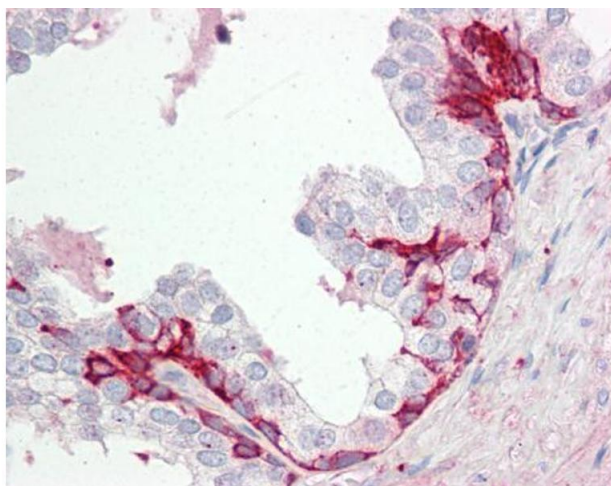
Alternative Name:	G protein-coupled receptor 55 (GPR55 Products)
Background:	Members of the G protein-coupled receptor (GPR) family, such as GPR55, play important roles in signal transduction from the external environment to the inside of the cell (Sawzdargo et al., 1999 [PubMed 9931487]).[supplied by OMIM] Cellular Localization: Cell membrane, Multi-pass membrane protein
Molecular Weight:	37 kDa
Gene ID:	9290
UniProt:	Q9Y2T6

Application Details

Application Notes:	IHC-P: 1:100-1:1000. Optimal dilutions/concentrations should be determined by the researcher. Not tested in other applications.
Restrictions:	For Research Use only

Handling

Format:	Liquid
Concentration:	1 mg/mL
Buffer:	1XPBS (pH 7), 50 % Glycerol, 0.01 % Thimerosal
Preservative:	Thimerosal (Merthiolate)
Precaution of Use:	This product contains Thimerosal (Merthiolate): a POISONOUS AND HAZARDOUS SUBSTANCE which should be handled by trained staff only.
Storage:	4 °C,-20 °C
Storage Comment:	Store as concentrated solution. Centrifuge briefly prior to opening vial. For short-term storage (1-2 weeks), store at 4°C. For long-term storage, aliquot and store at -20°C or below. Avoid multiple freeze-thaw cycles.



Immunohistochemistry

Image 1. IHC-P Image GPR55 antibody [C2C3], C-term detects GPR55 protein at membrane on human prostate by immunohistochemical analysis. Sample: Paraffin-embedded prostate. GPR55 antibody [C2C3], C-term , dilution: 1:100.