

Datasheet for ABIN2854735
**anti-Purinergic Receptor P2Y, G-Protein Coupled, 13 (P2RY13)
(Internal Region) antibody**



[Go to Product page](#)

2 Images

Overview

Quantity:	100 µL
Target:	Purinergic Receptor P2Y, G-Protein Coupled, 13 (P2RY13)
Binding Specificity:	Internal Region
Reactivity:	Human
Host:	Rabbit
Clonality:	Polyclonal
Conjugate:	Un-conjugated
Application:	Western Blotting (WB), Immunohistochemistry (Paraffin-embedded Sections) (IHC (p))

Product Details

Immunogen:	Carrier-protein conjugated synthetic peptide encompassing a sequence within the center region of human GPR86. The exact sequence is proprietary.
Isotype:	IgG
Cross-Reactivity:	Mouse (Murine), Rat (Rattus), Cow (Bovine)
Cross-Reactivity (Details):	Mouse (80 %), Rat (87 %), Bovine (80 %)
Characteristics:	Rabbit Polyclonal antibody to GPR86 (purinergic receptor P2Y, G-protein coupled, 13) GPR86 antibody [N3C2], Internal
Purification:	Purified by antigen-affinity chromatography.

Target Details

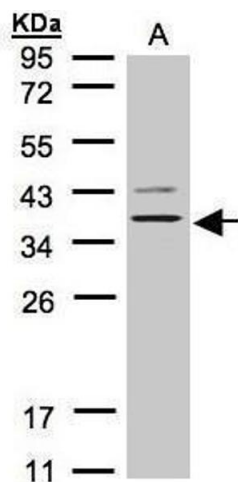
Target:	Purinergic Receptor P2Y, G-Protein Coupled, 13 (P2RY13)
Alternative Name:	GPR86 (P2RY13 Products)
Background:	The product of this gene belongs to the family of G-protein coupled receptors. This family has several receptor subtypes with different pharmacological selectivity, which overlaps in some cases, for various adenosine and uridine nucleotides. This receptor is activated by ADP.
Molecular Weight:	41 kDa
Gene ID:	53829
Pathways:	cAMP Metabolic Process

Application Details

Application Notes:	Suggested dilution Reference IHC (Formalin-fixed paraffin-embedded sections) 1:100-1:1000* Western blot 1:500-1:3000* Not tested in other applications. *Optimal dilutions/concentrations should be determined by the researcher.Suggested dilutionReferenceIHC (Formalin-fixed paraffin-embedded sections)1:100-1:1000* Western blot1:500-1:3000*
Comment:	Positive Control: H1299
Restrictions:	For Research Use only

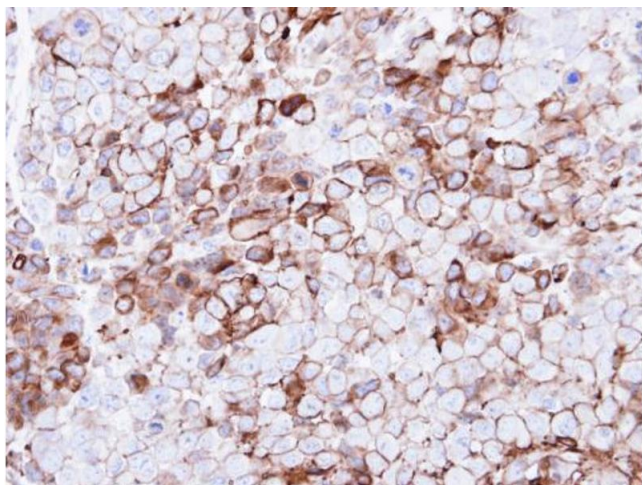
Handling

Format:	Liquid
Concentration:	1 mg/mL
Buffer:	1XPBS, 50 % Glycerol (pH 7). 0.01 % Thimerosal was added as a preservative.
Preservative:	Thimerosal (Merthiolate)
Precaution of Use:	This product contains Thimerosal (Merthiolate): a POISONOUS AND HAZARDOUS SUBSTANCE which should be handled by trained staff only.
Storage:	-20 °C
Storage Comment:	Keep as concentrated solution. Aliquot and store at -20°C or below. Avoid multiple freeze-thaw cycles.



Western Blotting

Image 1. WB Image Sample(30 µg of whole cell lysate)
A:H1299 12% SDS PAGE antibody diluted at 1:1000



Immunohistochemistry

Image 2. IHC-P Image Immunohistochemical analysis of paraffin-embedded CL1-0 xenograft, using GPR86, antibody at 1:500 dilution.