

Datasheet for ABIN2854740  
**anti-CXCR1 antibody (C-Term)**

## 8 Images

[Go to Product page](#)

## Overview

Quantity:	100 µL
Target:	CXCR1
Binding Specificity:	C-Term
Reactivity:	Human
Host:	Rabbit
Clonality:	Polyclonal
Conjugate:	This CXCR1 antibody is un-conjugated
Application:	Immunohistochemistry (Paraffin-embedded Sections) (IHC (p)), Immunocytochemistry (ICC), Immunofluorescence (IF), Immunohistochemistry (Frozen Sections) (IHC (fro))

## Product Details

Immunogen:	Carrier-protein conjugated synthetic peptide encompassing a sequence within the C-terminus region of human CXCR1. The exact sequence is proprietary.
Isotype:	IgG
Cross-Reactivity:	Human, Mouse
Characteristics:	Rabbit Polyclonal antibody to CXCR1 (chemokine (C-X-C motif) receptor 1) CXCR1 antibody [C2C3], C-term
Purification:	Purified by antigen-affinity chromatography.
Grade:	KO Validated

## Target Details

Target:	CXCR1
Alternative Name:	C-X-C motif chemokine receptor 1 ( <a href="#">CXCR1 Products</a> )
Background:	<p>The protein encoded by this gene is a member of the G-protein-coupled receptor family. This protein is a receptor for interleukin 8 (IL8). It binds to IL8 with high affinity, and transduces the signal through a G-protein activated second messenger system. Knockout studies in mice suggested that this protein inhibits embryonic oligodendrocyte precursor migration in developing spinal cord. This gene, IL8RB, a gene encoding another high affinity IL8 receptor, as well as IL8RBP, a pseudogene of IL8RB, form a gene cluster in a region mapped to chromosome 2q33-q36.</p> <p>Cellular Localization: Cell membrane</p>
Molecular Weight:	40 kDa
Gene ID:	3577
UniProt:	<a href="#">P25024</a>
Pathways:	<a href="#">cAMP Metabolic Process</a>

## Application Details

Application Notes:	ICC/IF: 1:100-1:1000. IHC-P: 1:100-1:1000. Optimal dilutions/concentrations should be determined by the researcher. Not tested in other applications.
Comment:	Validation: KO/KD
Restrictions:	For Research Use only

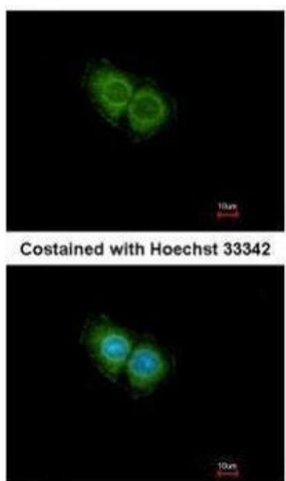
## Handling

Format:	Liquid
Concentration:	1.97 mg/mL
Buffer:	1XPBS pH 7, 20 % Glycerol, 0.025 % ProClin 300
Preservative:	ProClin
Precaution of Use:	This product contains ProClin: a POISONOUS AND HAZARDOUS SUBSTANCE which should be handled by trained staff only.
Storage:	4 °C, -20 °C

## Handling

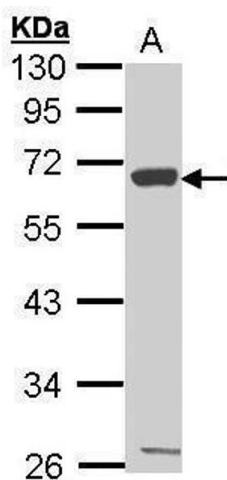
Storage Comment: Store as concentrated solution. Centrifuge briefly prior to opening vial. For short-term storage (1-2 weeks), store at 4°C. For long-term storage, aliquot and store at -20°C or below. Avoid multiple freeze-thaw cycles.

## Validation report #104426 for Immunohistochemistry (IHC)



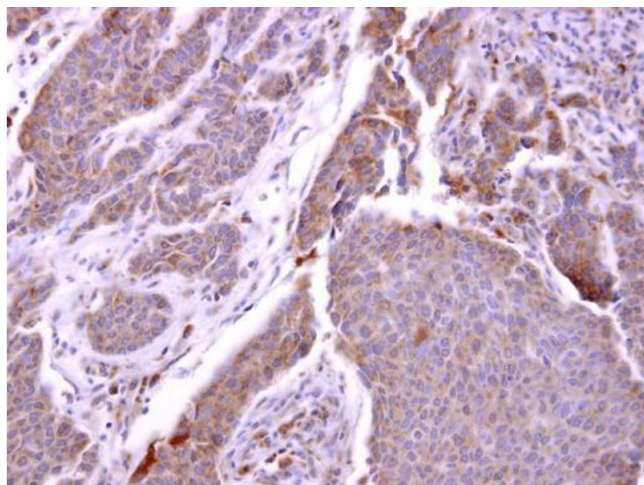
### Immunofluorescence

**Image 1.** ICC/IF Image Immunofluorescence analysis of methanol-fixed Hep G2, using CXCR1, antibody at 1:500 dilution.



### Western Blotting

**Image 2.** WB Image Sample (30 ug of whole cell lysate) A: Hep G2, 10% SDS PAGE antibody diluted at 1:1000



### Immunohistochemistry

**Image 3.** IHC-P Image CXCR1 antibody [C2C3], C-term detects CXCR1 protein at cytosol on human breast carcinoma by immunohistochemical analysis. Sample: CXCR1 antibody [C2C3], C-term, dilution: 1:250.

Please check the [product details page](#) for more images. Overall 8 images are available for ABIN2854740.