

Datasheet for ABIN2854742
anti-POLG antibody (C-Term)

5 Images

[Go to Product page](#)

Overview

Quantity:	100 µL
Target:	POLG
Binding Specificity:	C-Term
Reactivity:	Human
Host:	Rabbit
Clonality:	Polyclonal
Conjugate:	This POLG antibody is un-conjugated
Application:	Western Blotting (WB), Immunohistochemistry (Paraffin-embedded Sections) (IHC (p)), Immunofluorescence (IF), Immunocytochemistry (ICC), Immunoprecipitation (IP)

Product Details

Immunogen:	Recombinant protein encompassing a sequence within the C-terminus region of human DNA polymerase gamma. The exact sequence is proprietary.
Isotype:	IgG
Cross-Reactivity:	Human, Rat
Characteristics:	Rabbit Polyclonal antibody to DNA polymerase gamma (polymerase (DNA directed), gamma) DNA polymerase gamma antibody
Purification:	Purified by antigen-affinity chromatography.

Target Details

Target:	POLG
---------	------

Target Details

Alternative Name:	DNA polymerase gamma (POLG Products)
Target Type:	Viral Protein
Background:	<p>Mitochondrial DNA polymerase is heterotrimeric, consisting of a homodimer of accessory subunits plus a catalytic subunit. The protein encoded by this gene is the catalytic subunit of mitochondrial DNA polymerase. The encoded protein contains a polyglutamine tract near its N-terminus that may be polymorphic. Defects in this gene are a cause of progressive external ophthalmoplegia with mitochondrial DNA deletions 1 (PEOA1), sensory ataxic neuropathy dysarthria and ophthalmoparesis (SANDO), Alpers-Huttenlocher syndrome (AHS), and mitochondrial neurogastrointestinal encephalopathy syndrome (MNGIE). Two transcript variants encoding the same protein have been found for this gene.</p> <p>Cellular Localization: Mitochondrion</p>
Molecular Weight:	140 kDa
Gene ID:	5428
UniProt:	P54098

Application Details

Application Notes:	WB: 1:500-1:3000. ICC/IF: 1:100-1:1000. IHC-P: 1:100-1:1000. IP: 1:100-1:500. Optimal dilutions/concentrations should be determined by the researcher. Not tested in other applications.
Comment:	Positive Control: Rat testis , MCF-7 , MDA-MB-231
Restrictions:	For Research Use only

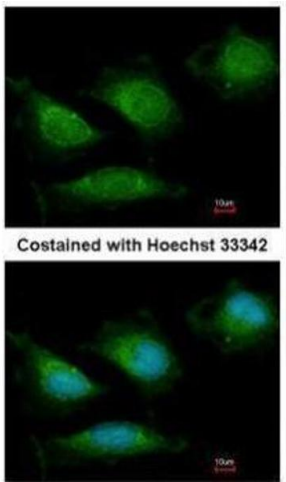
Handling

Format:	Liquid
Concentration:	0.67 mg/mL
Buffer:	1XPBS (pH 7), 20 % Glycerol, 0.025 % ProClin 300
Preservative:	ProClin
Precaution of Use:	This product contains ProClin: a POISONOUS AND HAZARDOUS SUBSTANCE which should be handled by trained staff only.
Storage:	4 °C,-20 °C

Handling

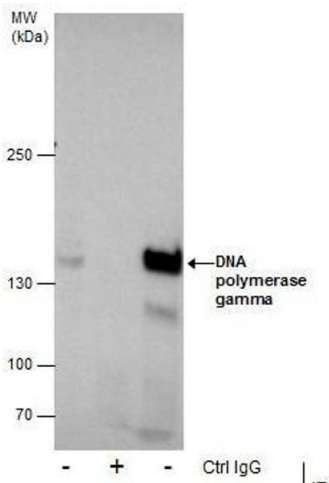
Storage Comment: Store as concentrated solution. Centrifuge briefly prior to opening vial. For short-term storage (1-2 weeks), store at 4°C. For long-term storage, aliquot and store at -20°C or below. Avoid multiple freeze-thaw cycles.

Images



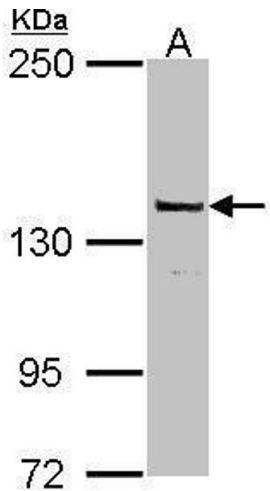
Immunofluorescence

Image 1. ICC/IF Image Immunofluorescence analysis of methanol-fixed HeLa, using DNA polymerase gamma, antibody at 1:200 dilution.



Immunoprecipitation

Image 2. IP Image Immunoprecipitation of DNA polymerase gamma protein from MCF-7 whole cell extracts using 5 µg of DNA polymerase gamma antibody, Western blot analysis was performed using DNA polymerase gamma antibody, EasyBlot anti-Rabbit IgG was used as a secondary reagent.



Western Blotting

Image 3. WB Image Sample (30 ug of whole cell lysate) A: MCF-7 5% SDS PAGE antibody diluted at 1:1000

Please check the [product details page](#) for more images. Overall 5 images are available for ABIN2854742.