

Datasheet for ABIN2854744

anti-UBE2B antibody**3** Images[Go to Product page](#)

Overview

Quantity:	100 µL
Target:	UBE2B
Reactivity:	Human
Host:	Rabbit
Clonality:	Polyclonal
Conjugate:	This UBE2B antibody is un-conjugated
Application:	Western Blotting (WB), Immunofluorescence (IF), Immunocytochemistry (ICC)

Product Details

Immunogen:	Recombinant protein encompassing a sequence within the center region of human UBE2B. The exact sequence is proprietary.
Isotype:	IgG
Cross-Reactivity:	Human, Mouse
Characteristics:	Rabbit Polyclonal antibody to UBE2B (ubiquitin-conjugating enzyme E2 B) UBE2B antibody
Purification:	Purified by antigen-affinity chromatography.

Target Details

Target:	UBE2B
Alternative Name:	ubiquitin conjugating enzyme E2 B (UBE2B Products)

Target Details

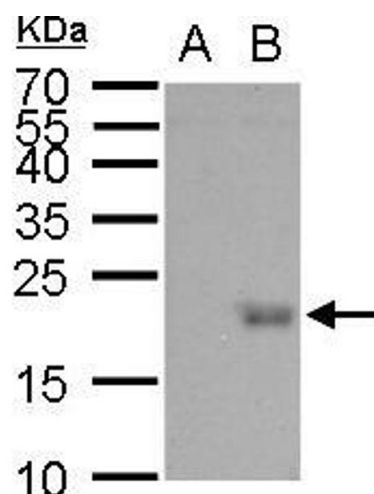
Target Type:	Viral Protein
Background:	<p>The modification of proteins with ubiquitin is an important cellular mechanism for targeting abnormal or short-lived proteins for degradation. Ubiquitination involves at least three classes of enzymes: ubiquitin-activating enzymes, or E1s, ubiquitin-conjugating enzymes, or E2s, and ubiquitin-protein ligases, or E3s. This gene encodes a member of the E2 ubiquitin-conjugating enzyme family. This enzyme is required for post-replicative DNA damage repair. Its protein sequence is 100 % identical to the mouse, rat, and rabbit homologs, which indicates that this enzyme is highly conserved in eukaryotic evolution.</p> <p>Cellular Localization: Cell membrane (By similarity) , Nucleus (By similarity)</p>
Molecular Weight:	17 kDa
Gene ID:	7320
UniProt:	P63146

Application Details

Application Notes:	WB: 1:500-1:10000. ICC/IF: 1:100-1:1000. Optimal dilutions/concentrations should be determined by the researcher. Not tested in other applications.
Comment:	Positive Control: Mouse brain , 3xFlag-human UBE2B-transfected 293T
Restrictions:	For Research Use only

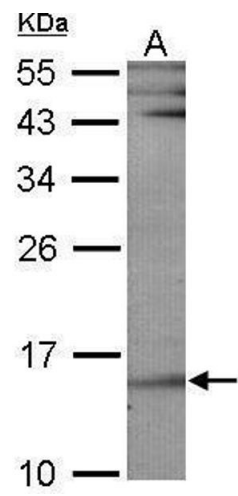
Handling

Format:	Liquid
Concentration:	2.72 mg/mL
Buffer:	1XPBS (pH 7), 1 % BSA, 20 % Glycerol, 0.01 % Thimerosal
Preservative:	Thimerosal (Merthiolate)
Precaution of Use:	This product contains Thimerosal (Merthiolate): a POISONOUS AND HAZARDOUS SUBSTANCE which should be handled by trained staff only.
Storage:	4 °C, -20 °C
Storage Comment:	Store as concentrated solution. Centrifuge briefly prior to opening vial. For short-term storage (1-2 weeks), store at 4°C. For long-term storage, aliquot and store at -20°C or below. Avoid multiple freeze-thaw cycles.



Western Blotting

Image 1. WB Image UBE2B antibody detects UBE2B protein by western blot analysis. A. 30 µg 293T whole cell lysate/extract B. 30 µg whole cell lysate/extract of 3xFlag-human UBE2B-transfected 293T cells 12 % SDS-PAGE UBE2B antibody , dilution: 1:5000



Western Blotting

Image 2. WB Image Sample (30 ug of whole cell lysate) A: NIH-3T3 12% SDS PAGE antibody diluted at 1:1000



Immunofluorescence

Image 3. ICC/IF Image Immunofluorescence analysis of paraformaldehyde-fixed A431, using UBE2B, antibody at 1:500 dilution.