

Datasheet for ABIN2854746

**anti-UBE2A antibody**[Go to Product page](#)**2** Images

## Overview

Quantity:	100 µL
Target:	UBE2A (ube2a)
Reactivity:	Human
Host:	Rabbit
Clonality:	Polyclonal
Conjugate:	This UBE2A antibody is un-conjugated
Application:	Western Blotting (WB), Immunofluorescence (IF), Immunocytochemistry (ICC)

## Product Details

Immunogen:	Full length human UBE2A Recombinant protein.
Isotype:	IgG
Specificity:	Specificity: Based on sequence homology, this antibody may cross react with UBE2B protein.
Cross-Reactivity:	Human
Characteristics:	Rabbit Polyclonal antibody to UBE2A (ubiquitin-conjugating enzyme E2A (RAD6 homolog)) UBE2A antibody
Purification:	Purified by antigen-affinity chromatography.

## Target Details

Target:	UBE2A (ube2a)
Alternative Name:	ubiquitin conjugating enzyme E2 A ( <a href="#">ube2a Products</a> )

## Target Details

**Background:** The modification of proteins with ubiquitin is an important cellular mechanism for targeting abnormal or short-lived proteins for degradation. Ubiquitination involves at least three classes of enzymes: ubiquitin-activating enzymes, or E1s, ubiquitin-conjugating enzymes, or E2s, and ubiquitin-protein ligases, or E3s. This gene encodes a member of the E2 ubiquitin-conjugating enzyme family. This enzyme is required for post-replicative DNA damage repair. Multiple alternatively spliced transcript variants have been found for this gene and they encode distinct isoforms.

**Molecular Weight:** 17 kDa

**Gene ID:** 7319

**UniProt:** [P49459](#)

## Application Details

**Application Notes:** WB: 1:500-1:3000. ICC/IF: 1:100-1:1000. Optimal dilutions/concentrations should be determined by the researcher. Not tested in other applications.

**Restrictions:** For Research Use only

## Handling

**Format:** Liquid

**Concentration:** 0.93 mg/mL

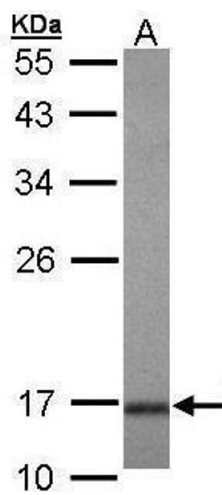
**Buffer:** 1XPBS ( pH 7), 20 % Glycerol, 0.01 % Thimerosal

**Preservative:** Thimerosal (Merthiolate)

**Precaution of Use:** This product contains Thimerosal (Merthiolate): a POISONOUS AND HAZARDOUS SUBSTANCE which should be handled by trained staff only.

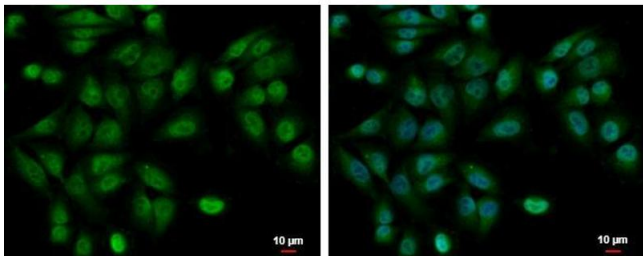
**Storage:** 4 °C, -20 °C

**Storage Comment:** Store as concentrated solution. Centrifuge briefly prior to opening vial. For short-term storage (1-2 weeks), store at 4°C. For long-term storage, aliquot and store at -20°C or below. Avoid multiple freeze-thaw cycles.



**Western Blotting**

**Image 1.** WB Image Sample (30 ug of whole cell lysate) A: Hela 10% SDS PAGE antibody diluted at 1:1000



**Immunofluorescence**

**Image 2.** ICC/IF Image UBE2A antibody detects UBE2A protein at cytoplasm and nucleus by immunofluorescent analysis. Sample: A375 cells were fixed in 4% paraformaldehyde at RT for 15 min. Green: UBE2A protein stained by UBE2A antibody, diluted at 1:500. Blue: Hoechst 33342 staining. Scale bar = 10 µm.