



[Go to Product page](#)

Datasheet for ABIN2854751  
**anti-E-cadherin antibody**

8 Images

10 Publications

### Overview

Quantity:	100 µL
Target:	E-cadherin (CDH1)
Reactivity:	Human
Host:	Rabbit
Clonality:	Polyclonal
Conjugate:	This E-cadherin antibody is un-conjugated
Application:	Western Blotting (WB), Immunofluorescence (IF), Immunoprecipitation (IP), Immunohistochemistry (Paraffin-embedded Sections) (IHC (p)), Immunocytochemistry (ICC), Immunohistochemistry (Whole Mount) (IHC (wm))

### Product Details

Immunogen:	Recombinant protein encompassing a sequence within the center region of human E-Cadherin. The exact sequence is proprietary.
Isotype:	IgG
Cross-Reactivity:	Dog, Human, Mouse, Rat, Zebrafish (Danio rerio)
Characteristics:	Rabbit Polyclonal antibody to E-Cadherin (cadherin 1, type 1, E-cadherin (epithelial)) E-Cadherin antibody
Purification:	Purified by antigen-affinity chromatography.
Grade:	KO Validated

## Target Details

---

Target:	E-cadherin (CDH1)
Alternative Name:	cadherin 1 ( <a href="#">CDH1 Products</a> )
Background:	<p>This gene is a classical cadherin from the cadherin superfamily. The encoded protein is a calcium dependent cell-cell adhesion glycoprotein comprised of five extracellular cadherin repeats, a transmembrane region and a highly conserved cytoplasmic tail. Mutations in this gene are correlated with gastric, breast, colorectal, thyroid and ovarian cancer. Loss of function is thought to contribute to progression in cancer by increasing proliferation, invasion, and/or metastasis. The ectodomain of this protein mediates bacterial adhesion to mammalian cells and the cytoplasmic domain is required for internalization. Identified transcript variants arise from mutation at consensus splice sites.</p> <p>Cellular Localization: Cell junction , Cell membrane</p>
Molecular Weight:	97 kDa
Gene ID:	999
UniProt:	<a href="#">P12830</a>
Pathways:	<a href="#">WNT Signaling</a> , <a href="#">Sensory Perception of Sound</a> , <a href="#">Cell-Cell Junction Organization</a> , <a href="#">Tube Formation</a>

## Application Details

---

Application Notes:	WB: 1:500-1:10000. ICC/IF: 1:100-1:1000. IHC-P: 1:100-1:1000. IP: 1:100-1:500. Optimal dilutions/concentrations should be determined by the researcher. Not tested in other applications.
Comment:	Positive Control: MCF-7 Validation: Comparison, KO/KD, Orthogonal
Restrictions:	For Research Use only

## Handling

---

Format:	Liquid
Concentration:	0.29 mg/mL
Buffer:	1XPBS pH 7, 1 % BSA, 20 % Glycerol, 0.025 % ProClin 300
Preservative:	ProClin
Precaution of Use:	This product contains ProClin: a POISONOUS AND HAZARDOUS SUBSTANCE which should be

## Handling

handled by trained staff only.

Storage: 4 °C,-20 °C

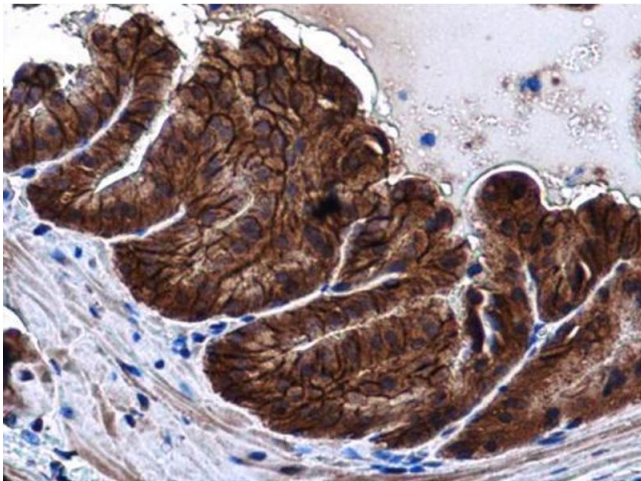
Storage Comment: Store as concentrated solution. Centrifuge briefly prior to opening vial. For short-term storage (1-2 weeks), store at 4°C. For long-term storage, aliquot and store at -20°C or below. Avoid multiple freeze-thaw cycles.

## Publications

Product cited in: Rodriguez-Gil, Hu, Greer: "Dishevelled proteins are associated with olfactory sensory neuron presynaptic terminals." in: **PLoS ONE**, Vol. 8, Issue 2, pp. e56561, (2013) ([PubMed](#)).

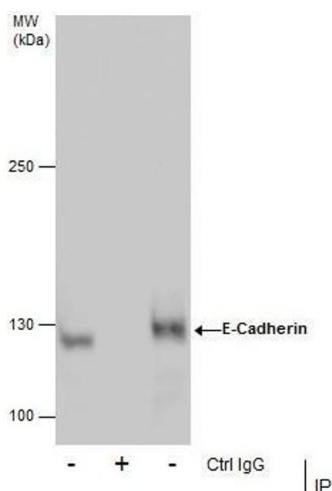
There are more publications referencing this product on: [Product page](#)

## Validation report #104437 for Cleavage Under Targets and Release Using Nuclease (CUT&RUN)



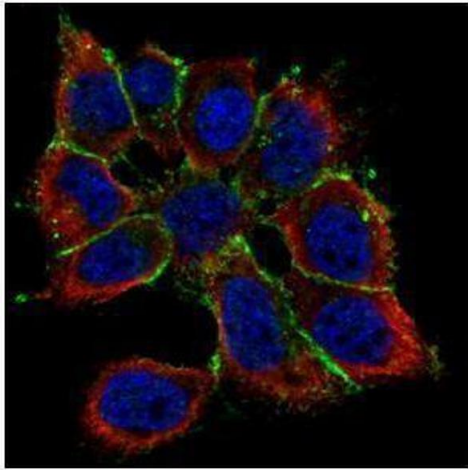
### Immunohistochemistry

**Image 1.** IHC-P Image E-Cadherin antibody detects E-Cadherin protein at cell membrane and cytoplasm in mouse prostate by immunohistochemical analysis. Sample: Paraffin-embedded mouse prostate. E-Cadherin antibody, diluted at 1:500.



### Immunoprecipitation

**Image 2.** IP Image Immunoprecipitation of E-Cadherin protein from MCF-7 whole cell extracts using 5 µg of E-Cadherin antibody, Western blot analysis was performed using E-Cadherin antibody, EasyBlot anti-Rabbit IgG was used as a secondary reagent.



### Immunofluorescence

**Image 3.** ICC/IF Image Confocal immunofluorescence analysis (Olympus FV10i) of paraformaldehyde-fixed A431, using E-cadherin, antibody (Green) at 1:1000 dilution. Alpha-tubulin filaments were labeled with (Red) at 1:2500.

Please check the [product details page](#) for more images. Overall 8 images are available for ABIN2854751.