

Datasheet for ABIN2854754
anti-EGFR antibody (C-Term)



[Go to Product page](#)

5 Images

Overview

Quantity:	100 µL
Target:	EGFR
Binding Specificity:	C-Term
Reactivity:	Human
Host:	Rabbit
Clonality:	Polyclonal
Conjugate:	This EGFR antibody is un-conjugated
Application:	Western Blotting (WB), Immunofluorescence (IF), Flow Cytometry (FACS), Immunohistochemistry (Paraffin-embedded Sections) (IHC (p)), Immunoprecipitation (IP), Immunocytochemistry (ICC)

Product Details

Immunogen:	Recombinant protein encompassing a sequence within the C-terminus region of human EGFR. The exact sequence is proprietary.
Isotype:	IgG
Specificity:	IP/MS validation was supported by references (PMID:30377372)
Cross-Reactivity:	Human, Mouse, Rat
Characteristics:	Rabbit Polyclonal antibody to EGFR (epidermal growth factor receptor) EGFR antibody [C2C3], C-term
Purification:	Purified by antigen-affinity chromatography.

Product Details

Grade: KO Validated

Target Details

Target: EGFR

Alternative Name: epidermal growth factor receptor ([EGFR Products](#))

Background: The protein encoded by this gene is a transmembrane glycoprotein that is a member of the protein kinase superfamily. This protein is a receptor for members of the epidermal growth factor family. EGFR is a cell surface protein that binds to epidermal growth factor. Binding of the protein to a ligand induces receptor dimerization and tyrosine autophosphorylation and leads to cell proliferation. Mutations in this gene are associated with lung cancer.

Cellular Localization: Cell membrane, Single-pass type I membrane protein , Isoform 2: Secreted

Molecular Weight: 134 kDa

Gene ID: 1956

UniProt: [P00533](#)

Pathways: [NF-kappaB Signaling](#), [RTK Signaling](#), [Fc-epsilon Receptor Signaling Pathway](#), [EGFR Signaling Pathway](#), [Neurotrophin Signaling Pathway](#), [Stem Cell Maintenance](#), [Hepatitis C](#), [Positive Regulation of Response to DNA Damage Stimulus](#), [Interaction of EGFR with phospholipase C-gamma](#), [Thromboxane A2 Receptor Signaling](#), [EGFR Downregulation](#), [S100 Proteins](#)

Application Details

Application Notes: WB: 1:500-1:3000. ICC/IF: 1:100-1:1000. IHC-P: 1:100-1:1000. IP: 1:100-1:500. Optimal dilutions/concentrations should be determined by the researcher. Not tested in other applications.

Comment: Positive Control: A431
Validation: IP/MS, KO/KD, Orthogonal

Restrictions: For Research Use only

Handling

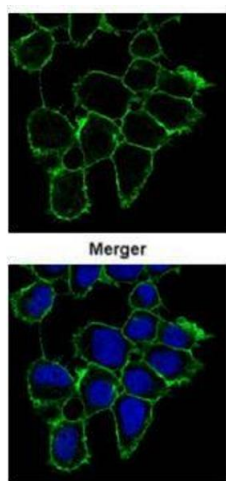
Format: Liquid

Concentration: 0.28 mg/mL

Handling

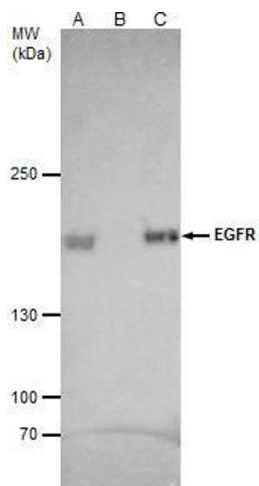
Buffer:	1XPBS (pH 7), 1 % BSA, 20 % Glycerol, 0.025 % ProClin 300
Preservative:	ProClin
Precaution of Use:	This product contains ProClin: a POISONOUS AND HAZARDOUS SUBSTANCE which should be handled by trained staff only.
Storage:	4 °C,-20 °C
Storage Comment:	Store as concentrated solution. Centrifuge briefly prior to opening vial. For short-term storage (1-2 weeks), store at 4°C. For long-term storage, aliquot and store at -20°C or below. Avoid multiple freeze-thaw cycles.

Images



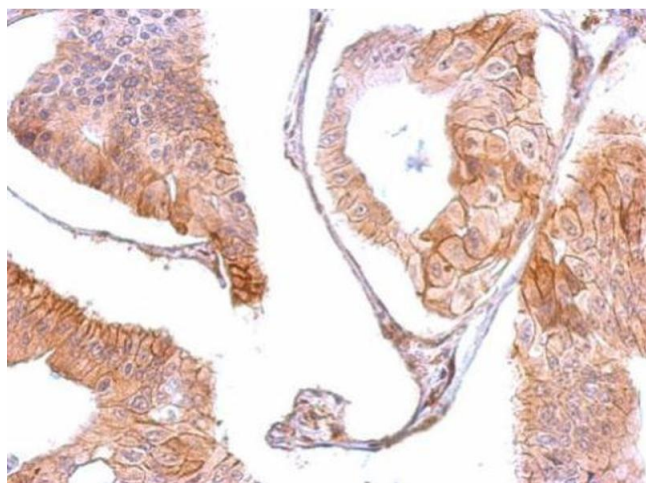
Immunofluorescence

Image 1. ICC/IF Image Confocal immunofluorescence analysis (Olympus FV10i) of methanol-fixed A431, using EGFR, antibody (Green) at 1:1000 dilution.



Immunoprecipitation

Image 2. IP Image EGFR antibody [C2C3], C-term immunoprecipitates EGFR protein in IP experiments. IP samples: A431 whole cell extract A. 40 µg A431 whole cell extract B. Control with 4 µg of preimmune Rabbit IgG C. Immunoprecipitation of EGFR protein by 4 µg EGFR antibody [C2C3], C-term , 5 % SDS-PAGE The immunoprecipitated EGFR protein was detected by EGFR antibody [C2C3], C-term , diluted at 1:1000. [EasyBlot anti-rabbit IgG was used as a secondary reagent]



Immunohistochemistry

Image 3. IHC-P Image EGFR antibody [C2C3], C-term detects EGFR protein at membrane on human gastric cancer by immunohistochemical analysis. Sample: Paraffin-embedded gastric cancer. EGFR antibody [C2C3], C-term , dilution: 1:500.

Please check the [product details page](#) for more images. Overall 5 images are available for ABIN2854754.