

Datasheet for ABIN2854782
anti-MDM2 antibody (Center)

7 Images

[Go to Product page](#)

Overview

Quantity:	100 µL
Target:	MDM2
Binding Specificity:	Center
Reactivity:	Human, Mouse
Host:	Rabbit
Clonality:	Polyclonal
Conjugate:	This MDM2 antibody is un-conjugated
Application:	Western Blotting (WB), Immunofluorescence (IF), Immunohistochemistry (Paraffin-embedded Sections) (IHC (p)), Immunoprecipitation (IP), Immunocytochemistry (ICC), Chromatin Immunoprecipitation (ChIP)

Product Details

Immunogen:	Recombinant protein encompassing a sequence within the center region of human MDM2. The exact sequence is proprietary.
Isotype:	IgG
Cross-Reactivity:	Cat (Feline), Dog (Canine), Pig (Porcine)
Cross-Reactivity (Details):	Cat (95 %), Dog (91 %), Pig (93 %)
Characteristics:	Rabbit Polyclonal antibody to MDM2 (Mdm2 p53 binding protein homolog) MDM2 antibody
Purification:	Purified by antigen-affinity chromatography.

Target Details

Target:	MDM2
Alternative Name:	MDM2 (MDM2 Products)
Background:	<p>This gene is a target gene of the transcription factor tumor protein p53. The encoded protein is a nuclear phosphoprotein that binds and inhibits transactivation by tumor protein p53, as part of an autoregulatory negative feedback loop. Overexpression of this gene can result in excessive inactivation of tumor protein p53, diminishing its tumor suppressor function. This protein has E3 ubiquitin ligase activity, which targets tumor protein p53 for proteasomal degradation. This protein also affects the cell cycle, apoptosis, and tumorigenesis through interactions with other proteins, including retinoblastoma 1 and ribosomal protein L5. More than 40 different alternatively spliced transcript variants have been isolated from both tumor and normal tissues.</p> <p>Cellular Localization: Nucleus , nucleoplasm , Cytoplasm , nucleolus</p>
Molecular Weight:	55 kDa
Gene ID:	4193
Pathways:	p53 Signaling , PI3K-Akt Signaling , Cell Division Cycle , Fc-epsilon Receptor Signaling Pathway , EGFR Signaling Pathway , Neurotrophin Signaling Pathway , Autophagy , Ubiquitin Proteasome Pathway

Application Details

Application Notes:	<p>Suggested dilution Reference ChIP assay Assay-dependent dilution ICC/IF 1:100-1:1000* IHC (Formalin-fixed paraffin-embedded sections) 1:100-1:1000* Immunoprecipitation 1:100-1:500* Western blot 1:500-1:1000* Not tested in other applications. *Optimal dilutions/concentrations should be determined by the researcher. Suggested dilution Reference ChIP assay Assay-dependent dilution ICC/IF 1:100-1:1000* IHC (Formalin-fixed paraffin-embedded sections) 1:100-1:1000* Immunoprecipitation 1:100-1:500* Western blot 1:500-1:1000*</p>
Comment:	<p>Positive Control: H1299 , HCT116 , Neuro2A , GL261 , C8D30 , NIH-3T3 , BCL-1 , Raw264.7 , C2C12 , 293T , mouse MDM2-transfected 293T</p>
Restrictions:	For Research Use only

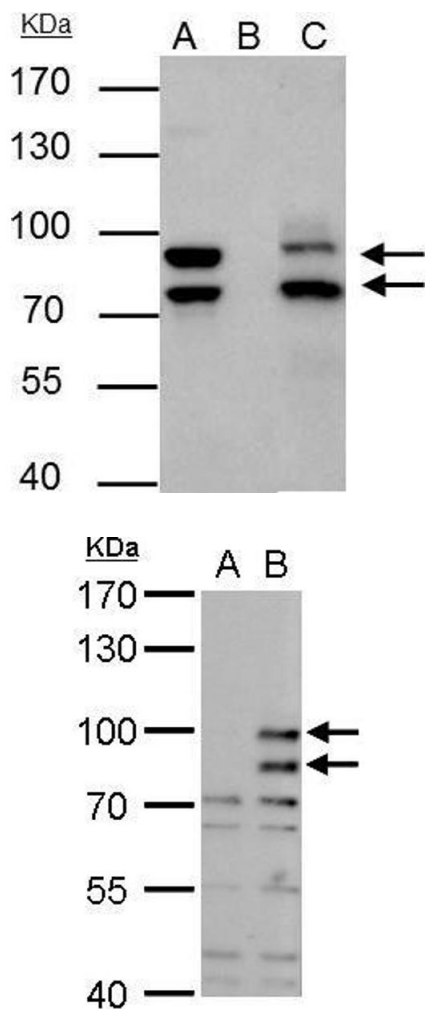
Handling

Format:	Liquid
---------	--------

Handling

Concentration:	0.74 mg/mL
Buffer:	1XPBS, 1 % BSA, 20 % Glycerol (pH 7). 0.01 % Thimerosal was added as a preservative.
Preservative:	Thimerosal (Merthiolate)
Precaution of Use:	This product contains Thimerosal (Merthiolate): a POISONOUS AND HAZARDOUS SUBSTANCE which should be handled by trained staff only.
Storage:	-20 °C
Storage Comment:	Keep as concentrated solution. Aliquot and store at -20°C or below. Avoid multiple freeze-thaw cycles.

Validation report #104437 for Cleavage Under Targets and Release Using Nuclease (CUT&RUN)

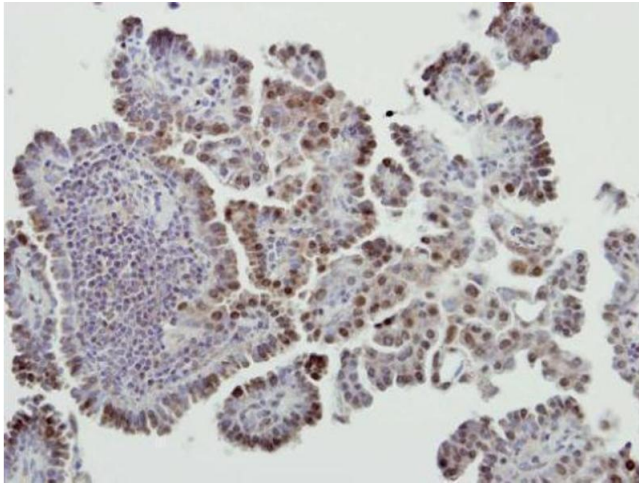


Immunoprecipitation

Image 1. IP Image MDM2 antibody immunoprecipitates MDM2 protein in IP experiments. IP samples: Jurkat whole cell extract A. 30 µg Jurkat cell whole cell extract B. Control with 4 µg of preimmune Rabbit IgG C. Immunoprecipitation of MDM2 protein by 4 µg MDM2 antibody , 7.5 % SDS-PAGE The immunoprecipitated MDM2 protein was detected by MDM2 antibody , diluted at 1:500. [EasyBlot anti-rabbit IgG was used as a secondary reagent]

Western Blotting

Image 2. WB Image MDM2 antibody detects MDM2 protein by western blot analysis. A. 30 µg 293T whole cell lysate/extract B. 30 µg whole cell lysate/extract of mouse MDM2-transfected 293T cells 7.5 % SDS-PAGE MDM2 antibody , dilution: 1:1000



Immunohistochemistry

Image 3. IHC-P Image Immunohistochemical analysis of paraffin-embedded human lung cancer, using MDM2, antibody at 1:500 dilution.

Please check the [product details page](#) for more images. Overall 7 images are available for ABIN2854782.