

Datasheet for ABIN2854783

anti-MMP1 antibody

8 Images

5 Publications

[Go to Product page](#)

Overview

Quantity:	100 µL
Target:	MMP1
Reactivity:	Human
Host:	Rabbit
Clonality:	Polyclonal
Conjugate:	This MMP1 antibody is un-conjugated
Application:	Western Blotting (WB), Immunohistochemistry (Paraffin-embedded Sections) (IHC (p)), Immunofluorescence (IF), Immunocytochemistry (ICC)

Product Details

Immunogen:	Recombinant protein encompassing a sequence within the center region of human MMP1. The exact sequence is proprietary.
Isotype:	IgG
Cross-Reactivity:	Human, Mouse
Characteristics:	Rabbit Polyclonal antibody to MMP1 (matrix metalloproteinase 1 (interstitial collagenase)) MMP1 antibody
Purification:	Purified by antigen-affinity chromatography.

Target Details

Target:	MMP1
Alternative Name:	matrix metalloproteinase 1 (MMP1 Products)

Target Details

Background:	<p>Proteins of the matrix metalloproteinase (MMP) family are involved in the breakdown of extracellular matrix in normal physiological processes, such as embryonic development, reproduction, and tissue remodeling, as well as in disease processes, such as arthritis and metastasis. Most MMP's are secreted as inactive proproteins which are activated when cleaved by extracellular proteinases. This gene encodes a secreted enzyme which breaks down the interstitial collagens, types I, II, and III. The gene is part of a cluster of MMP genes which localize to chromosome 11q22.3. Alternative splicing results in multiple transcript variants.</p> <p>Cellular Localization: Secreted , extracellular space , extracellular matrix</p>
-------------	--

Molecular Weight:	54 kDa
-------------------	--------

Gene ID:	4312
----------	------

UniProt:	P03956
----------	------------------------

Application Details

Application Notes:	WB: 1:500-1:3000. IHC-P: 1:100-1:1000. Optimal dilutions/concentrations should be determined by the researcher. Not tested in other applications.
Comment:	Validation: Orthogonal
Restrictions:	For Research Use only

Handling

Format:	Liquid
Concentration:	1.7 mg/mL
Buffer:	1XPBS pH 7, 20 % Glycerol, 0.025 % ProClin 300
Preservative:	ProClin
Precaution of Use:	This product contains ProClin: a POISONOUS AND HAZARDOUS SUBSTANCE which should be handled by trained staff only.
Storage:	4 °C,-20 °C
Storage Comment:	Store as concentrated solution. Centrifuge briefly prior to opening vial. For short-term storage (1-2 weeks), store at 4°C. For long-term storage, aliquot and store at -20°C or below. Avoid multiple freeze-thaw cycles.

Publications

Product cited in: Bordignon, Bottoni, Xu, Popescu, Truan, Guenova, Kofler, Jafari, Ostano, Röcken, Neel, Dotto: "Dualism of FGF and TGF- β Signaling in Heterogeneous Cancer-Associated Fibroblast Activation with ETV1 as a Critical Determinant." in: **Cell reports**, Vol. 28, Issue 9, pp. 2358-2372.e6, (2020) ([PubMed](#)).

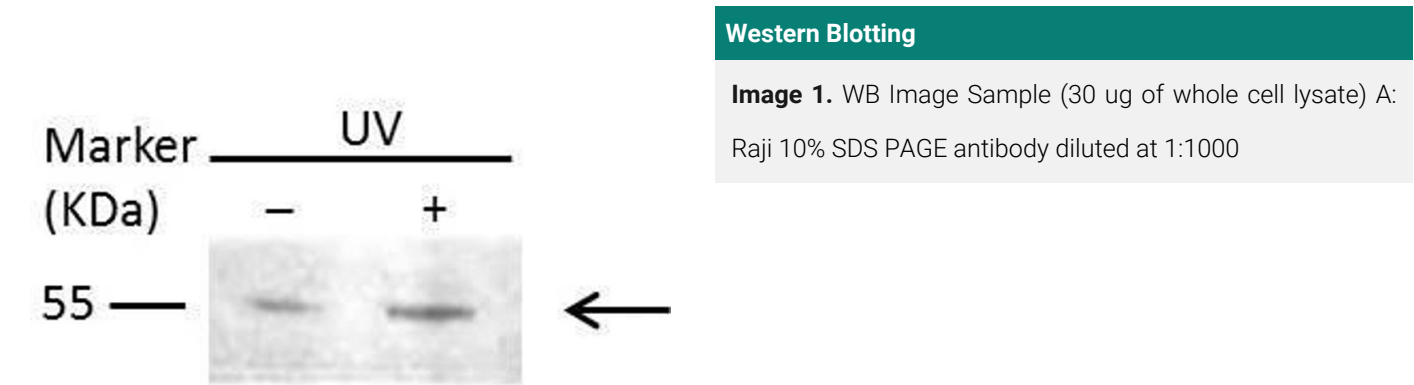
Wu, Lin, Hou, Chang, Wen, Lin, Chiang: "1,2-Bis[(3-Methoxyphenyl)Methyl]Ethane-1,2-Dicarboxylic Acid Reduces UVB-Induced Photodamage In Vitro and In Vivo." in: **Antioxidants (Basel, Switzerland)**, Vol. 8, Issue 10, (2019) ([PubMed](#)).

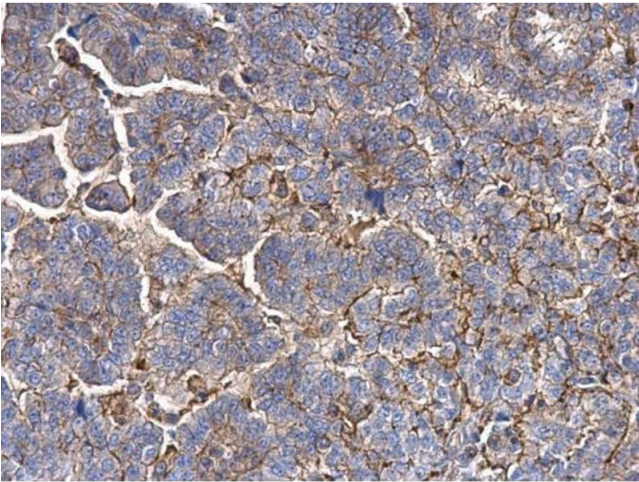
Dubey, Wei, Yu, Williams, Wang, Deng, Tsai, Wang, Deng: "Adipose-derived Stem Cells Attenuates Diabetic Osteoarthritis via Inhibition of Glycation-mediated Inflammatory Cascade." in: **Aging and disease**, Vol. 10, Issue 3, pp. 483-496, (2019) ([PubMed](#)).

Olaya-C, Garrido, Hernandez-Losa, Sesé, Ayala-Ramirez, Somoza, Vargas, Ramón Y Cajal: "The umbilical cord, preeclampsia and the VEGF family." in: **International journal of women's health**, Vol. 10, pp. 783-795, (2018) ([PubMed](#)).

Kim, Choi, Lee, Soh, Kim, Park: "Senescent tumor cells lead the collective invasion in thyroid cancer." in: **Nature communications**, Vol. 8, pp. 15208, (2018) ([PubMed](#)).

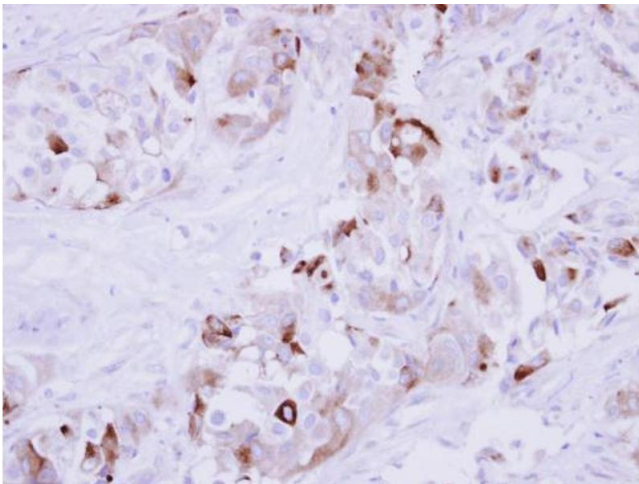
Images





Immunohistochemistry

Image 2. IHC-P Image MMP1 antibody detects MMP1 protein at secreted on human endometrial carcinoma by immunohistochemical analysis. Sample: Paraffin-embedded human endometrial carcinoma. MMP1 antibody , dilution: 1:500.



Immunohistochemistry

Image 3. IHC-P Image Immunohistochemical analysis of paraffin-embedded human breast cancer, using MMP1, antibody at 1:250 dilution.

Please check the [product details page](#) for more images. Overall 8 images are available for ABIN2854783.