

Datasheet for ABIN2854784

anti-MTHFR antibody**2** Images[Go to Product page](#)

Overview

Quantity:	100 µL
Target:	MTHFR
Reactivity:	Human
Host:	Rabbit
Clonality:	Polyclonal
Conjugate:	This MTHFR antibody is un-conjugated
Application:	Western Blotting (WB)

Product Details

Immunogen:	Recombinant protein encompassing a sequence within the center region of human MTHFR. The exact sequence is proprietary.
Isotype:	IgG
Cross-Reactivity:	Human, Mouse
Characteristics:	Rabbit Polyclonal antibody to MTHFR (5,10-methylenetetrahydrofolate reductase (NADPH)) MTHFR antibody [N3C3]
Purification:	Purified by antigen-affinity chromatography.

Target Details

Target:	MTHFR
Alternative Name:	methylenetetrahydrofolate reductase (MTHFR Products)

Target Details

Background: Methylenetetrahydrofolate reductase (EC 1.5.1.20) catalyzes the conversion of 5,10-methylenetetrahydrofolate to 5-methyltetrahydrofolate, a cosubstrate for homocysteine remethylation to methionine.[supplied by OMIM]

Molecular Weight: 75 kDa

Gene ID: 4524

UniProt: [P42898](#)

Pathways: [Methionine Biosynthetic Process](#)

Application Details

Application Notes: WB: 1:500-1:3000. Optimal dilutions/concentrations should be determined by the researcher.
Not tested in other applications.

Comment: Positive Control: A549 , mouse brain , mouse liver

Restrictions: For Research Use only

Handling

Format: Liquid

Concentration: 1 mg/mL

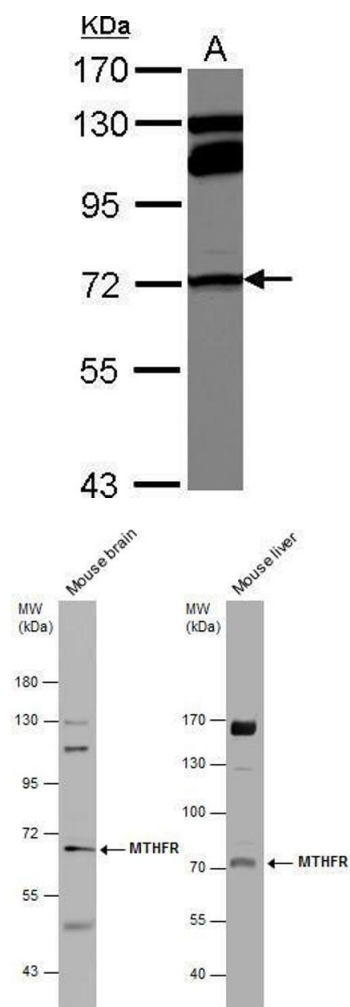
Buffer: 1XPBS (pH 7), 1 % BSA, 20 % Glycerol, 0.01 % Thimerosal

Preservative: Thimerosal (Merthiolate)

Precaution of Use: This product contains Thimerosal (Merthiolate): a POISONOUS AND HAZARDOUS SUBSTANCE which should be handled by trained staff only.

Storage: 4 °C,-20 °C

Storage Comment: Store as concentrated solution. Centrifuge briefly prior to opening vial. For short-term storage (1-2 weeks), store at 4°C. For long-term storage, aliquot and store at -20°C or below. Avoid multiple freeze-thaw cycles.



Western Blotting

Image 1. WB Image Sample (30 ug of whole cell lysate) A:
A549 7.5% SDS PAGE antibody diluted at 1:1000

Western Blotting

Image 2. WB Image Various tissue extracts (50 μ g) were
separated by 7.5% SDS-PAGE, and the membrane was
blotted with MTHFR antibody [N3C3] , diluted at 1:1000.