



[Go to Product page](#)

Datasheet for ABIN2854785  
**anti-MVP antibody (C-Term)**

3 Images

Overview

Quantity:	100 µL
Target:	MVP
Binding Specificity:	C-Term
Reactivity:	Human
Host:	Rabbit
Clonality:	Polyclonal
Conjugate:	This MVP antibody is un-conjugated
Application:	Western Blotting (WB), Immunohistochemistry (Paraffin-embedded Sections) (IHC (p))

Product Details

Immunogen:	Recombinant protein encompassing a sequence within the C-terminus region of human MVP/LRP. The exact sequence is proprietary.
Isotype:	IgG
Cross-Reactivity:	Human, Mouse
Characteristics:	Rabbit Polyclonal antibody to MVP/LRP (major vault protein) MVP/LRP antibody [C2C3], C-term
Purification:	Purified by antigen-affinity chromatography.
Grade:	KO Validated

## Target Details

---

Target:	MVP
Alternative Name:	major vault protein ( <a href="#">MVP Products</a> )
Background:	<p>This gene encodes the major vault protein which is a lung resistance-related protein. Vaults are multi-subunit structures that may be involved in nucleo-cytoplasmic transport. This protein mediates drug resistance, perhaps via a transport process. It is widely distributed in normal tissues, and overexpressed in multidrug-resistant cancer cells. The protein overexpression is a potentially useful marker of clinical drug resistance. This gene produces two transcripts by using two alternative exon 2 sequences, however, the open reading frames are the same in both transcripts.</p> <p>Cellular Localization: Cytoplasm , Nucleus , nuclear pore complex</p>
Molecular Weight:	99 kDa
Gene ID:	9961
UniProt:	<a href="#">Q14764</a>

## Application Details

---

Application Notes:	WB: 1:500-1:3000. IHC-P: 1:100-1:1000. Optimal dilutions/concentrations should be determined by the researcher. Not tested in other applications.
Comment:	Positive Control: NIH-3T3 , HeLa Validation: KO/KD
Restrictions:	For Research Use only

## Handling

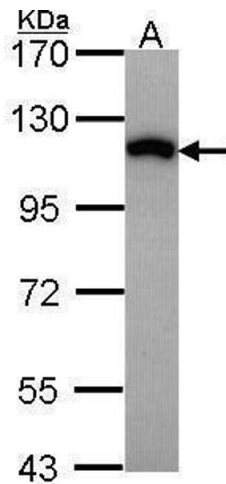
---

Format:	Liquid
Concentration:	1 mg/mL
Buffer:	1XPBS ( pH 7), 20 % Glycerol, 0.01 % Thimerosal
Preservative:	Thimerosal (Merthiolate)
Precaution of Use:	This product contains Thimerosal (Merthiolate): a POISONOUS AND HAZARDOUS SUBSTANCE which should be handled by trained staff only.
Storage:	4 °C,-20 °C

## Handling

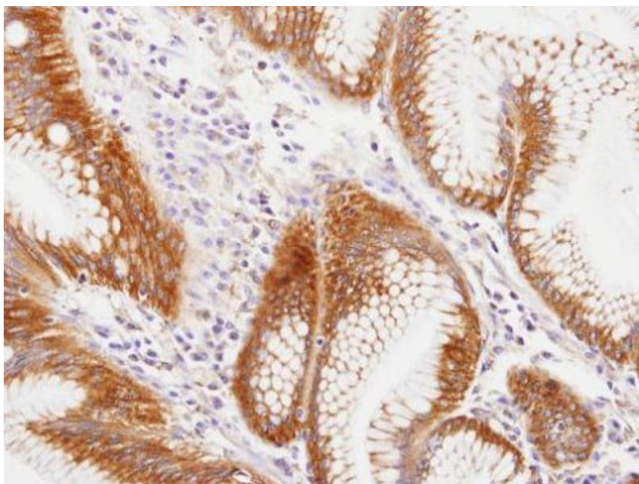
Storage Comment: Store as concentrated solution. Centrifuge briefly prior to opening vial. For short-term storage (1-2 weeks), store at 4°C. For long-term storage, aliquot and store at -20°C or below. Avoid multiple freeze-thaw cycles.

## Images



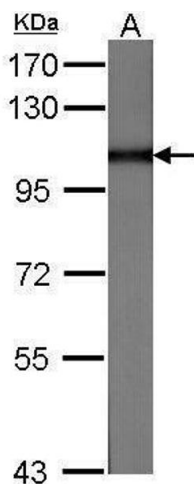
### Western Blotting

**Image 1.** WB Image Sample (30 ug of whole cell lysate) A: HeLa 7.5% SDS PAGE LRP(MVP) antibody antibody diluted at 1:1000



### Immunohistochemistry

**Image 2.** IHC-P Image Immunohistochemical analysis of paraffin-embedded human gastric , using MVP/LRP, antibody at 1:100 dilution.



### Western Blotting

**Image 3.** WB Image Sample (30 ug of whole cell lysate) A: NIH-3T3 7.5% SDS PAGE antibody diluted at 1:1000