

Datasheet for ABIN2854786

**anti-NDRG1 antibody****3** Images[Go to Product page](#)

## Overview

Quantity:	100 µL
Target:	NDRG1
Reactivity:	Human
Host:	Rabbit
Clonality:	Polyclonal
Conjugate:	This NDRG1 antibody is un-conjugated
Application:	Western Blotting (WB), Immunohistochemistry (Paraffin-embedded Sections) (IHC (p))

## Product Details

Immunogen:	Recombinant protein encompassing a sequence within the center region of human NDRG1. The exact sequence is proprietary.
Isotype:	IgG
Cross-Reactivity:	Human, Mouse, Rat
Characteristics:	Rabbit Polyclonal antibody to NDRG1 (N-myc downstream regulated 1) NDRG1 antibody
Purification:	Purified by antigen-affinity chromatography.

## Target Details

Target:	NDRG1
Alternative Name:	N-myc downstream regulated 1 ( <a href="#">NDRG1 Products</a> )

## Target Details

**Background:** This gene is a member of the N-myc downregulated gene family which belongs to the alpha/beta hydrolase superfamily. The protein encoded by this gene is a cytoplasmic protein involved in stress responses, hormone responses, cell growth, and differentiation. It is necessary for p53-mediated caspase activation and apoptosis. Mutation in this gene has been reported to be causative for hereditary motor and sensory neuropathy-Lom. Multiple alternatively spliced variants, encoding the same protein, have been identified.

Cellular Localization: Cytoplasm , Nucleus , Cell membrane

**Molecular Weight:** 43 kDa

**Gene ID:** 10397

**UniProt:** [Q92597](#)

## Application Details

**Application Notes:** WB: 1:500-1:3000. IHC-P: 1:100-1:1000. Optimal dilutions/concentrations should be determined by the researcher. Not tested in other applications.

**Comment:** Positive Control: 293T , HepG2 , NIH-3T3

**Restrictions:** For Research Use only

## Handling

**Format:** Liquid

**Concentration:** 0.67 mg/mL

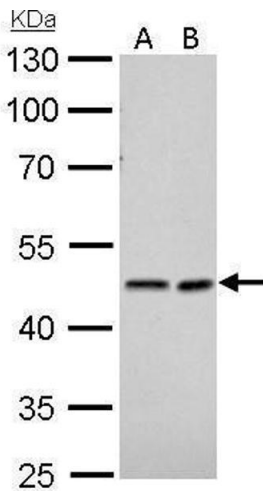
**Buffer:** 0.1M Tris-Glycine ( pH 7), 10 % Glycerol, 0.01 % Thimerosal

**Preservative:** Thimerosal (Merthiolate)

**Precaution of Use:** This product contains Thimerosal (Merthiolate): a POISONOUS AND HAZARDOUS SUBSTANCE which should be handled by trained staff only.

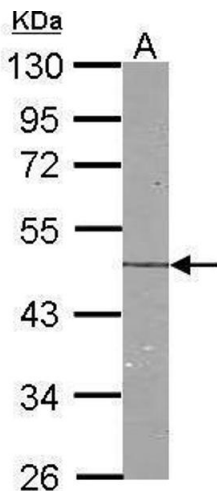
**Storage:** 4 °C,-20 °C

**Storage Comment:** Store as concentrated solution. Centrifuge briefly prior to opening vial. For short-term storage (1-2 weeks), store at 4°C. For long-term storage, aliquot and store at -20°C or below. Avoid multiple freeze-thaw cycles.



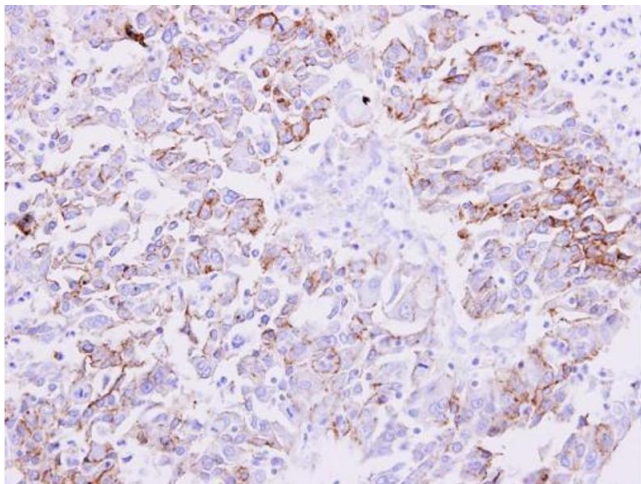
#### Western Blotting

**Image 1.** WB Image NDRG1 antibody detects NDRG1 protein by Western blot analysis. A. 30 µg 293T whole cell lysate/extract B. 30 µg HepG2 whole cell lysate/extract 10 % SDS-PAGE NDRG1 antibody , dilution: 1:1000



#### Western Blotting

**Image 2.** WB Image Sample (30 ug of whole cell lysate) A:NIH-3T3 10% SDS PAGE antibody diluted at 1:1000



#### Immunohistochemistry

**Image 3.** IHC-P Image NDRG1 antibody detects NDRG1 protein at membrane on human liver carcinoma by immunohistochemical analysis. Sample: Paraffin-embedded liver carcinoma. NDRG1 antibody , dilution: 1:500.