

Datasheet for ABIN2854787

anti-NPPB antibody**2** Images[Go to Product page](#)

Overview

Quantity:	100 µL
Target:	NPPB
Reactivity:	Human
Host:	Rabbit
Clonality:	Polyclonal
Conjugate:	This NPPB antibody is un-conjugated
Application:	Western Blotting (WB), Immunofluorescence (IF), Immunocytochemistry (ICC)

Product Details

Immunogen:	Recombinant protein encompassing a sequence within the center region of human BNP. The exact sequence is proprietary.
Isotype:	IgG
Cross-Reactivity:	Human
Characteristics:	Rabbit polyclonal antibody to BNP (natriuretic peptide precursor B) BNP antibody [N1C3]
Purification:	Purified by antigen-affinity chromatography.

Target Details

Target:	NPPB
Alternative Name:	natriuretic peptide B (NPPB Products)

Target Details

Background: This gene is a member of the natriuretic peptide family and encodes a secreted protein which functions as a cardiac hormone. The protein undergoes two cleavage events, one within the cell and a second after secretion into the blood. The protein's biological actions include natriuresis, diuresis, vasorelaxation, inhibition of renin and aldosterone secretion, and a key role in cardiovascular homeostasis. A high concentration of this protein in the bloodstream is indicative of heart failure. Mutations in this gene have been associated with postmenopausal osteoporosis.

Cellular Localization: Secreted

Molecular Weight: 15 kDa

Gene ID: 4879

UniProt: [P16860](#)

Pathways: [Hormone Activity](#)

Application Details

Application Notes: WB: 1:500-1:3000. ICC/IF: 1:100-1:1000. Optimal dilutions/concentrations should be determined by the researcher. Not tested in other applications.

Restrictions: For Research Use only

Handling

Format: Liquid

Concentration: 1 mg/mL

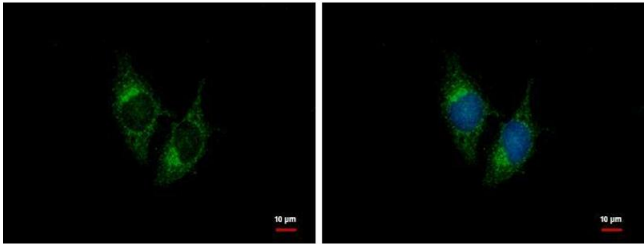
Buffer: 1XPBS pH 7, 20 % Glycerol, 0.025 % ProClin 300

Preservative: ProClin

Precaution of Use: This product contains ProClin: a POISONOUS AND HAZARDOUS SUBSTANCE which should be handled by trained staff only.

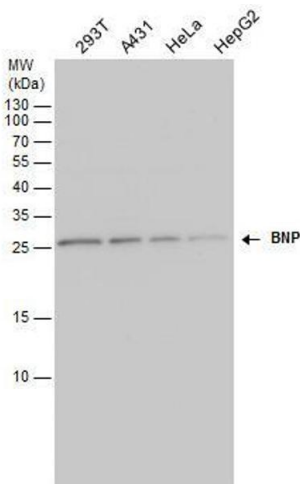
Storage: 4 °C,-20 °C

Storage Comment: Store as concentrated solution. Centrifuge briefly prior to opening vial. For short-term storage (1-2 weeks), store at 4°C. For long-term storage, aliquot and store at -20°C or below. Avoid multiple freeze-thaw cycles.



Immunofluorescence

Image 1. ICC/IF Image BNP antibody [N1C3] detects BNP protein at cytoplasm by immunofluorescent analysis. Sample: HeLa cells were fixed in ice-cold MeOH for 5 min. Green: BNP protein stained by BNP antibody [N1C3] , diluted at 1:500. Blue: Hoechst 33342 staining.



Western Blotting

Image 2. WB Image BNP antibody detects BNP protein by western blot analysis. Various whole cell extracts (30 µg) were separated by 15% SDS-PAGE, and the membrane was blotted with BNP antibody , diluted by 1:1000.