

Datasheet for ABIN2854789
anti-RASSF1 antibody (Center)

2 Images

[Go to Product page](#)

Overview

Quantity:	100 µL
Target:	RASSF1
Binding Specificity:	Center
Reactivity:	Human
Host:	Rabbit
Clonality:	Polyclonal
Conjugate:	This RASSF1 antibody is un-conjugated
Application:	Western Blotting (WB), Immunofluorescence (IF), Immunocytochemistry (ICC)

Product Details

Immunogen:	Recombinant protein encompassing a sequence within the center region of human RASSF1. The exact sequence is proprietary.
Isotype:	IgG
Cross-Reactivity:	Mouse (Murine), Rat (Rattus)
Cross-Reactivity (Details):	Mouse (91 %), Rat (91 %)
Characteristics:	Rabbit polyclonal antibody to RASSF1 (Ras association (RalGDS/AF-6) domain family member 1) RASSF1 antibody [N1C3]
Purification:	Purified by antigen-affinity chromatography.

Target Details

Target:	RASSF1
Alternative Name:	RASSF1 (RASSF1 Products)
Background:	<p>This gene encodes a protein similar to the RAS effector proteins. Loss or altered expression of this gene has been associated with the pathogenesis of a variety of cancers, which suggests the tumor suppressor function of this gene. The inactivation of this gene was found to be correlated with the hypermethylation of its CpG-island promoter region. The encoded protein was found to interact with DNA repair protein XPA. The protein was also shown to inhibit the accumulation of cyclin D1, and thus induce cell cycle arrest. Seven alternatively spliced transcript variants of this gene encoding distinct isoforms have been reported.</p> <p>Cellular Localization: Isoform A: Cytoplasm , cytoskeleton , Centrosome , Spindle , Isoform C: Nucleus</p>
Molecular Weight:	39 kDa
Gene ID:	11186

Application Details

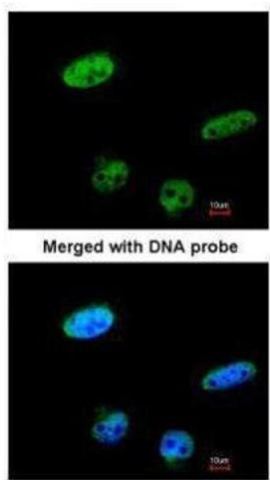
Application Notes:	Suggested dilution Reference ICC/IF 1:100-1:1000* Western blot 1:500-1:3000* Not tested in other applications. *Optimal dilutions/concentrations should be determined by the researcher.Suggested dilutionReferenceICC/IF1:100-1:1000* Western blot1:500-1:3000*
Comment:	Positive Control: 293T , A431 , HeLaS3
Restrictions:	For Research Use only

Handling

Format:	Liquid
Concentration:	1 mg/mL
Buffer:	0.1M Tris, 0.1M Glycine, 10 % Glycerol (pH 7). 0.01 % Thimerosal was added as a preservative.
Preservative:	Thimerosal (Merthiolate)
Precaution of Use:	This product contains Thimerosal (Merthiolate): a POISONOUS AND HAZARDOUS SUBSTANCE which should be handled by trained staff only.
Storage:	-20 °C
Storage Comment:	Keep as concentrated solution. Aliquot and store at -20°C or below. Avoid multiple freeze-thaw

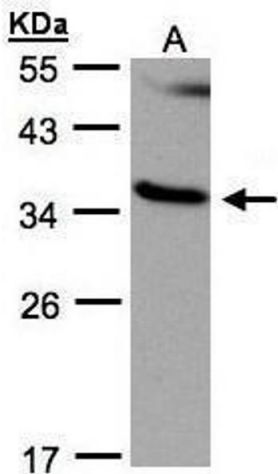
cycles.

Validation report #104426 for Immunohistochemistry (IHC)



Immunofluorescence

Image 1. ICC/IF Image Immunofluorescence analysis of paraformaldehyde-fixed HeLa, using RASSF1, antibody at 1:100 dilution.



Western Blotting

Image 2. WB Image Sample(30 ug whole cell lysate) A:293T 12% SDS PAGE diluted at 1:500