



[Go to Product page](#)

Datasheet for ABIN2854791
anti-RHOC antibody

4 Images

Overview

Quantity:	100 µL
Target:	RHOC
Reactivity:	Human
Host:	Rabbit
Clonality:	Polyclonal
Conjugate:	This RHOC antibody is un-conjugated
Application:	Western Blotting (WB), Immunofluorescence (IF), Immunohistochemistry (Paraffin-embedded Sections) (IHC (p)), Immunocytochemistry (ICC)

Product Details

Immunogen:	Recombinant protein encompassing a sequence within the center region of human RhoC. The exact sequence is proprietary.
Isotype:	IgG
Cross-Reactivity:	Human, Mouse
Characteristics:	Rabbit Polyclonal antibody to RhoC (ras homolog gene family, member C) RhoC antibody
Purification:	Purified by antigen-affinity chromatography.

Target Details

Target:	RHOC
Alternative Name:	ras homolog family member C (RHOC Products)

Target Details

Background: This gene encodes a member of the Rho family of small GTPases, which cycle between inactive GDP-bound and active GTP-bound states and function as molecular switches in signal transduction cascades. Rho proteins promote reorganization of the actin cytoskeleton and regulate cell shape, attachment, and motility. The protein encoded by this gene is prenylated at its C-terminus, and localizes to the cytoplasm and plasma membrane. It is thought to be important in cell locomotion. Overexpression of this gene is associated with tumor cell proliferation and metastasis. Multiple alternatively spliced variants, encoding the same protein, have been identified.

Cellular Localization: Cell membrane, Lipid-anchor, Cytoplasmic side

Molecular Weight: 22 kDa

Gene ID: 389

UniProt: [P08134](#)

Pathways: [WNT Signaling](#), [Cell-Cell Junction Organization](#)

Application Details

Application Notes: WB: 1:500-1:3000. ICC/IF: 1:100-1:1000. IHC-P: 1:100-1:1000. Optimal dilutions/concentrations should be determined by the researcher. Not tested in other applications.

Comment: Positive Control: A431 , Mouse liver

Restrictions: For Research Use only

Handling

Format: Liquid

Concentration: 1 mg/mL

Buffer: 1XPBS (pH 7), 1 % BSA, 20 % Glycerol, 0.01 % Thimerosal

Preservative: Thimerosal (Merthiolate)

Precaution of Use: This product contains Thimerosal (Merthiolate): a POISONOUS AND HAZARDOUS SUBSTANCE which should be handled by trained staff only.

Storage: 4 °C,-20 °C

Storage Comment: Store as concentrated solution. Centrifuge briefly prior to opening vial. For short-term storage (1-2 weeks), store at 4°C. For long-term storage, aliquot and store at -20°C or below. Avoid

multiple freeze-thaw cycles.

Images

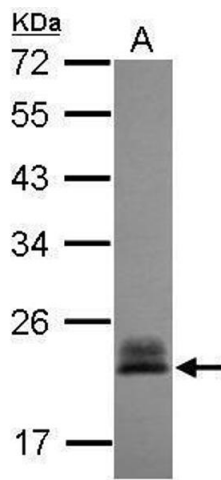
**Western Blotting**

Image 1. WB Image Sample (30 ug of whole cell lysate) A: A431, 12% SDS PAGE antibody diluted at 1:3000

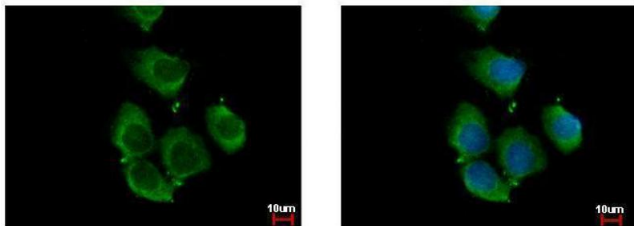
**Immunofluorescence**

Image 2. ICC/IF Image RhoC antibody detects RHOC protein at cytoplasm by immunofluorescent analysis. Sample: A431 cells were fixed in ice-cold MeOH for 5 min. Green: RHOC protein stained by RhoC antibody, diluted at 1:500. Blue: Hoechst 33342 staining.

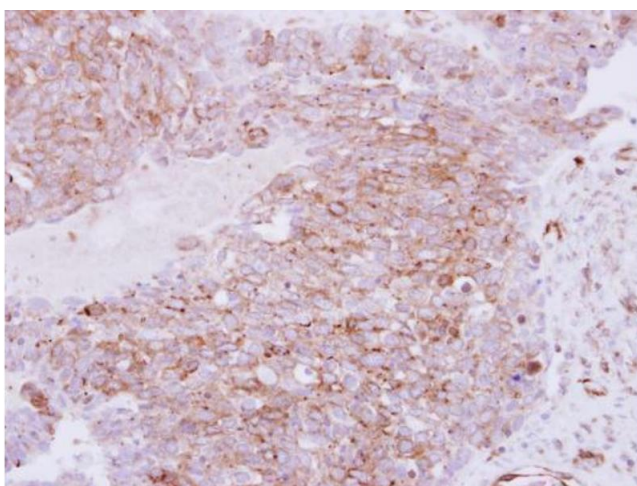
**Immunohistochemistry**

Image 3. IHC-P Image Immunohistochemical analysis of paraffin-embedded human ovarian carcinoma, using RhoC, antibody at 1:250 dilution.

Please check the [product details page](#) for more images. Overall 4 images are available for ABIN2854791.