

Datasheet for ABIN2854793

anti-SOD1 antibody

8 Images

5 Publications

[Go to Product page](#)

Overview

Quantity:	100 µL
Target:	SOD1
Reactivity:	Human
Host:	Rabbit
Clonality:	Polyclonal
Conjugate:	This SOD1 antibody is un-conjugated
Application:	Western Blotting (WB), ELISA, Immunohistochemistry (Paraffin-embedded Sections) (IHC (p))

Product Details

Immunogen:	Recombinant protein encompassing a sequence within the center region of human SOD1. The exact sequence is proprietary.
Isotype:	IgG
Cross-Reactivity:	Alligator, Avian, Human, Mouse, Rat
Characteristics:	Rabbit Polyclonal antibody to SOD1 (superoxide dismutase 1, soluble) SOD1 antibody
Purification:	Purified by antigen-affinity chromatography.
Grade:	KO Validated

Target Details

Target:	SOD1
---------	------

Target Details

Alternative Name:	superoxide dismutase 1 (SOD1 Products)
Background:	<p>The protein encoded by this gene binds copper and zinc ions and is one of two isozymes responsible for destroying free superoxide radicals in the body. The encoded isozyme is a soluble cytoplasmic protein, acting as a homodimer to convert naturally-occurring but harmful superoxide radicals to molecular oxygen and hydrogen peroxide. The other isozyme is a mitochondrial protein. Mutations in this gene have been implicated as causes of familial amyotrophic lateral sclerosis. Rare transcript variants have been reported for this gene.</p> <p>Cellular Localization: Cytoplasm</p>
Molecular Weight:	16 kDa
Gene ID:	6647
UniProt:	P00441
Pathways:	Sensory Perception of Sound , Transition Metal Ion Homeostasis

Application Details

Application Notes:	WB: 1:500-1:10000. IHC-P: 1:100-1:1000. ELISA: 1:1000-1:10000. Optimal dilutions/concentrations should be determined by the researcher. Not tested in other applications.
Comment:	Positive Control: mouse brain , Rat brain , NT2D1 , 293T Validation: KO/KD, Orthogonal
Restrictions:	For Research Use only

Handling

Format:	Liquid
Concentration:	0.15 mg/mL
Buffer:	1XPBS (pH 7), 1 % BSA, 20 % Glycerol, 0.025 % ProClin 300
Preservative:	ProClin
Precaution of Use:	This product contains ProClin: a POISONOUS AND HAZARDOUS SUBSTANCE which should be handled by trained staff only.
Storage:	4 °C,-20 °C

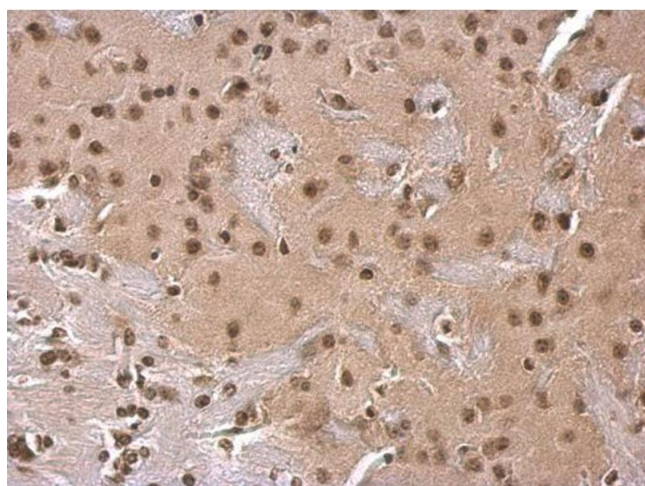
Handling

Storage Comment: Store as concentrated solution. Centrifuge briefly prior to opening vial. For short-term storage (1-2 weeks), store at 4°C. For long-term storage, aliquot and store at -20°C or below. Avoid multiple freeze-thaw cycles.

Publications

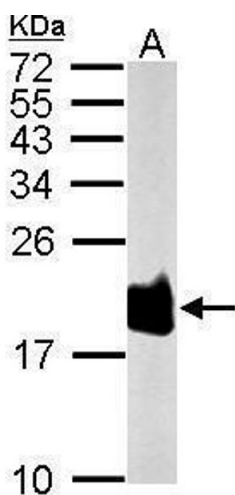
Product cited in: Rodriguez-Gil, Hu, Greer: "Dishevelled proteins are associated with olfactory sensory neuron presynaptic terminals." in: **PLoS ONE**, Vol. 8, Issue 2, pp. e56561, (2013) ([PubMed](#)).

Validation report #104437 for Cleavage Under Targets and Release Using Nuclease (CUT&RUN)



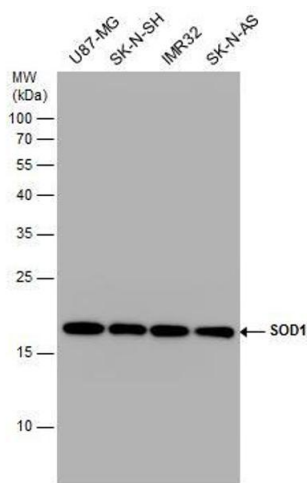
Immunohistochemistry

Image 1. IHC Image SOD1 antibody detects SOD1 protein at cytosol on mouse fore brain by immunohistochemical analysis. Sample: Paraffin-embedded mouse fore brain. SOD1 antibody, dilution: 1:500.



Western Blotting

Image 2. WB Image Sample (50 ug of whole cell lysate) A: Rat brain 15% SDS PAGE antibody diluted at 1:1000



Western Blotting

Image 3. WB Image SOD1 antibody detects SOD1 protein by western blot analysis. Various whole cell extracts (30 µg) were separated by 15% SDS-PAGE, and the membrane was blotted with SOD1 antibody , diluted at a dilution of 1:1000.

Please check the [product details page](#) for more images. Overall 8 images are available for ABIN2854793.