



Datasheet for ABIN2854795
anti-ITGA6 antibody (Internal Region)



[Go to Product page](#)

4 Images

2 Publications

Overview

Quantity:	100 µL
Target:	ITGA6
Binding Specificity:	Internal Region
Reactivity:	Human
Host:	Rabbit
Clonality:	Polyclonal
Conjugate:	This ITGA6 antibody is un-conjugated
Application:	Western Blotting (WB)

Product Details

Immunogen:	Recombinant protein encompassing a sequence within the center region of human Integrin alpha 6. The exact sequence is proprietary.
Isotype:	IgG
Cross-Reactivity:	Mouse (Murine), Cow (Bovine)
Cross-Reactivity (Details):	Mouse (94 %), Bovine (94 %)
Characteristics:	Rabbit Polyclonal antibody to Integrin alpha 6 (integrin, alpha 6) Integrin alpha 6 antibody [N3C2], Internal
Purification:	Purified by antigen-affinity chromatography.

Target Details

Target:	ITGA6
Alternative Name:	Integrin alpha 6 (ITGA6 Products)
Background:	<p>The ITGA6 protein product is the integrin alpha chain alpha 6. Integrins are integral cell-surface proteins composed of an alpha chain and a beta chain. A given chain may combine with multiple partners resulting in different integrins. For example, alpha 6 may combine with beta 4 in the integrin referred to as TSP180, or with beta 1 in the integrin VLA-6. Integrins are known to participate in cell adhesion as well as cell-surface mediated signalling. Two transcript variants encoding different isoforms have been found for this gene.</p> <p>Cellular Localization: Membrane, Single-pass type I membrane protein</p>
Molecular Weight:	127 kDa
Gene ID:	3655
Pathways:	CXCR4-mediated Signaling Events , Brown Fat Cell Differentiation , Integrin Complex

Application Details

Application Notes:	<p>Suggested dilution Reference Western blot 1:500-1:3000* Not tested in other applications.</p> <p>*Optimal dilutions/concentrations should be determined by the researcher.Suggested dilutionReferenceWestern blot1:500-1:3000*</p>
Comment:	Positive Control: Human ESC , Rat lung
Restrictions:	For Research Use only

Handling

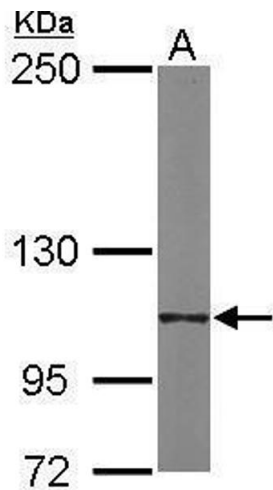
Format:	Liquid
Concentration:	0.64 mg/mL
Buffer:	0.1M Tris, 0.1M Glycine, 10 % Glycerol (pH 7). 0.01 % Thimerosal was added as a preservative.
Preservative:	Thimerosal (Merthiolate)
Precaution of Use:	This product contains Thimerosal (Merthiolate): a POISONOUS AND HAZARDOUS SUBSTANCE which should be handled by trained staff only.
Storage:	-20 °C
Storage Comment:	Keep as concentrated solution. Aliquot and store at -20°C or below. Avoid multiple freeze-thaw

cycles.

Publications

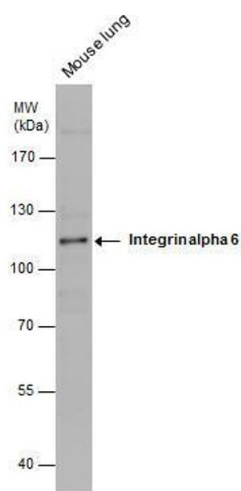
Product cited in: Hinderer, Sudrow, Schneider, Holeiter, Layland, Seifert, Schenke-Layland: "Surface functionalization of electrospun scaffolds using recombinant human decorin attracts circulating endothelial progenitor cells." in: **Scientific reports**, Vol. 8, Issue 1, pp. 110, (2018) ([PubMed](#)).

Images



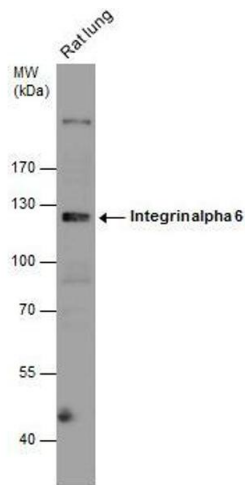
Western Blotting

Image 1. WB Image Sample (20 ug of whole cell lysate) A: human ESC 5% SDS PAGE antibody diluted at 1:2000



Western Blotting

Image 2. WB Image Mouse tissue extract (50 µg) was separated by 7.5% SDS-PAGE, and the membrane was blotted with Integrin alpha 6 antibody [N3C2], Internal , diluted at 1:500.



Western Blotting

Image 3. WB Image Rat tissue extract (50 µg) was separated by 7.5% SDS-PAGE, and the membrane was blotted with Integrin alpha 6 antibody [N3C2], Internal , diluted at 1:2000.

Please check the [product details page](#) for more images. Overall 4 images are available for ABIN2854795.