

Datasheet for ABIN2854797
anti-KRT15 antibody



[Go to Product page](#)

2 Images

Overview

Quantity:	100 µL
Target:	KRT15
Reactivity:	Human
Host:	Rabbit
Clonality:	Polyclonal
Conjugate:	This KRT15 antibody is un-conjugated
Application:	Western Blotting (WB), Immunohistochemistry (Paraffin-embedded Sections) (IHC (p))

Product Details

Immunogen:	Recombinant protein encompassing a sequence within the center region of human Cytokeratin 15. The exact sequence is proprietary.
Isotype:	IgG
Cross-Reactivity:	Human
Characteristics:	Rabbit Polyclonal antibody to Cytokeratin 15 (keratin 15) Cytokeratin 15 antibody
Purification:	Purified by antigen-affinity chromatography.

Target Details

Target:	KRT15
Alternative Name:	keratin 15 (KRT15 Products)

Target Details

Background: The protein encoded by this gene is a member of the keratin gene family. The keratins are intermediate filament proteins responsible for the structural integrity of epithelial cells and are subdivided into cytokeratins and hair keratins. Most of the type I cytokeratins consist of acidic proteins which are arranged in pairs of heterotypic keratin chains and are clustered in a region on chromosome 17q21.2.

Molecular Weight: 49 kDa

Gene ID: 3866

UniProt: [P19012](#)

Application Details

Application Notes: WB: 1:500-1:3000. IHC-P: 1:100-1:1000. Optimal dilutions/concentrations should be determined by the researcher. Not tested in other applications.

Comment: Positive Control: HeLa

Restrictions: For Research Use only

Handling

Format: Liquid

Concentration: 0.64 mg/mL

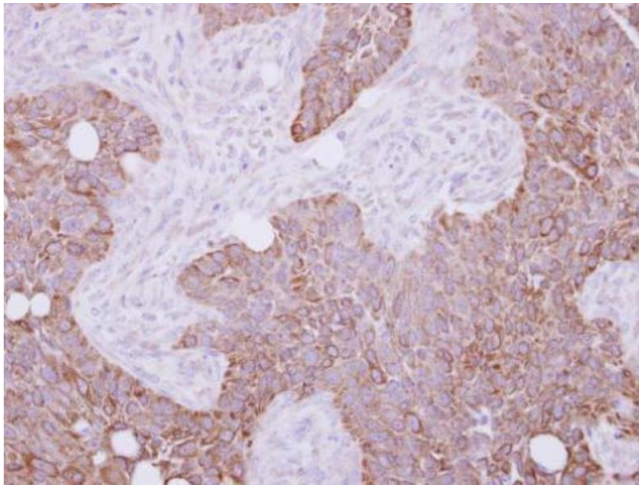
Buffer: 0.1M Tris-Glycine (pH 7), 10 % Glycerol, 0.01 % Thimerosal

Preservative: Thimerosal (Merthiolate)

Precaution of Use: This product contains Thimerosal (Merthiolate): a POISONOUS AND HAZARDOUS SUBSTANCE which should be handled by trained staff only.

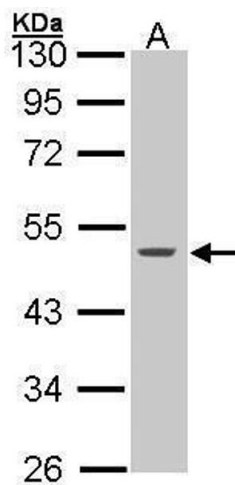
Storage: 4 °C,-20 °C

Storage Comment: Store as concentrated solution. Centrifuge briefly prior to opening vial. For short-term storage (1-2 weeks), store at 4°C. For long-term storage, aliquot and store at -20°C or below. Avoid multiple freeze-thaw cycles.



Immunohistochemistry

Image 1. IHC-P Image Cytokeratin 15 antibody detects KRT15 protein at cytosol and membrane on HSC-3 xenograft by immunohistochemical analysis. Sample: Paraffin-embedded HSC-3 xenograft. Cytokeratin 15 antibody, dilution: 1:500.



Western Blotting

Image 2. WB Image Sample (30 ug of whole cell lysate) A: HeLa 10% SDS PAGE antibody diluted at 1:1000