

Datasheet for ABIN2854807
anti-BCAR1 antibody (Internal Region)[Go to Product page](#)

4 Images

Overview

Quantity:	100 µL
Target:	BCAR1
Binding Specificity:	Internal Region
Reactivity:	Human, Mouse
Host:	Rabbit
Clonality:	Polyclonal
Conjugate:	This BCAR1 antibody is un-conjugated
Application:	Western Blotting (WB), Immunohistochemistry (Paraffin-embedded Sections) (IHC (p)), Immunofluorescence (IF), Immunocytochemistry (ICC)

Product Details

Immunogen:	Recombinant protein encompassing a sequence within the center region of human BCAR1. The exact sequence is proprietary.
Isotype:	IgG
Characteristics:	Rabbit Polyclonal antibody to p130Cas (breast cancer anti-estrogen resistance 1) p130Cas antibody [N2C2], Internal
Purification:	Purified by antigen-affinity chromatography.

Target Details

Target:	BCAR1
Alternative Name:	p130Cas (BCAR1 Products)

Target Details

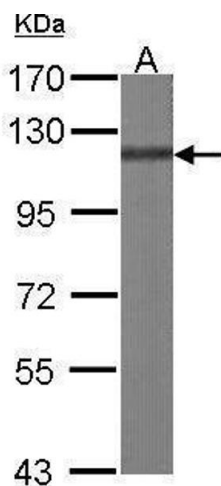
Background:	BCAR1, or CAS, is an Src (MIM 190090) family kinase substrate involved in various cellular events, including migration, survival, transformation, and invasion (Sawada et al., 2006 [PubMed 17129785]).[supplied by OMIM] Cellular Localization: Cell junction , focal adhesion , Cytoplasm
Molecular Weight:	93 kDa
Gene ID:	9564
Pathways:	EGFR Signaling Pathway , Neurotrophin Signaling Pathway , CXCR4-mediated Signaling Events , Platelet-derived growth Factor Receptor Signaling

Application Details

Application Notes:	Suggested dilution Reference ICC/IF 1:100-1:1000* IHC (Formalin-fixed paraffin-embedded sections) 1:100-1:1000* Western blot 1:500-1:3000* Not tested in other applications. *Optimal dilutions/concentrations should be determined by the researcher.Suggested dilutionReferenceICC/IF1:100-1:1000* IHC (Formalin-fixed paraffin-embedded sections)1:100-1:1000* Western blot1:500-1:3000*
Comment:	Positive Control: H1299 , NIH-3T3
Restrictions:	For Research Use only

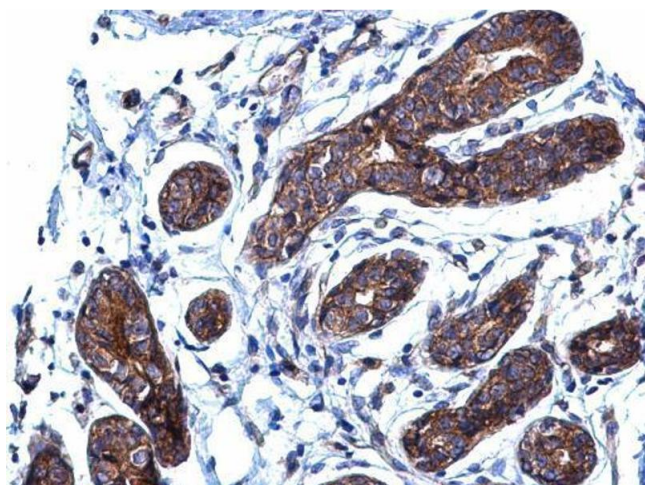
Handling

Format:	Liquid
Concentration:	0.379 mg/mL
Buffer:	1XPBS, 10 % Glycerol (pH 7). 0.01 % Thimerosal was added as a preservative.
Preservative:	Thimerosal (Merthiolate)
Precaution of Use:	This product contains Thimerosal (Merthiolate): a POISONOUS AND HAZARDOUS SUBSTANCE which should be handled by trained staff only.
Storage:	-20 °C
Storage Comment:	Keep as concentrated solution. Aliquot and store at -20°C or below. Avoid multiple freeze-thaw cycles.



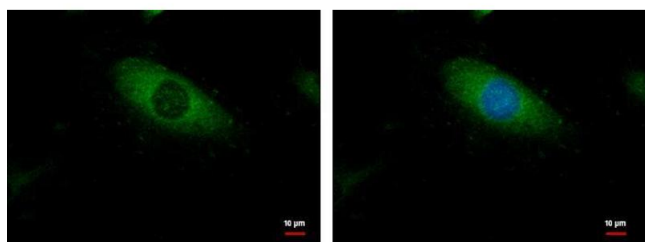
Western Blotting

Image 1. WB Image Sample (30 ug of whole cell lysate)
A: NIH-3T3 7.5% SDS PAGE antibody diluted at 1:1000



Immunohistochemistry

Image 2. IHC-P Image BCAR1 antibody [N2C2], Internal detects BCAR1 protein at cytoplasm on human breast carcinoma by immunohistochemical analysis. Sample: Paraffin-embedded human breast carcinoma. BCAR1 antibody [N2C2], Internal, diluted at 1:500.



Immunofluorescence

Image 3. ICC/IF Image BCAR1 antibody [N2C2], Internal detects BCAR1 protein at cytoplasm by immunofluorescent analysis. Sample: HeLa cells were fixed in ice-cold MeOH for 5 min. Green: BCAR1 protein stained by BCAR1 antibody [N2C2], Internal, diluted at 1:500. Blue: Hoechst 33342 staining.

Please check the [product details page](#) for more images. Overall 4 images are available for ABIN2854807.