

Datasheet for ABIN2854808
anti-DNAJA3 antibody (Center)

3 Images

[Go to Product page](#)

Overview

Quantity:	100 µL
Target:	DNAJA3
Binding Specificity:	Center
Reactivity:	Human
Host:	Rabbit
Clonality:	Polyclonal
Conjugate:	This DNAJA3 antibody is un-conjugated
Application:	Western Blotting (WB), Immunofluorescence (IF), Immunohistochemistry (Paraffin-embedded Sections) (IHC (p)), Immunocytochemistry (ICC)

Product Details

Immunogen:	Recombinant protein encompassing a sequence within the center region of human TID1. The exact sequence is proprietary.
Isotype:	IgG
Characteristics:	Rabbit Polyclonal antibody to TID1 (DnaJ (Hsp40) homolog, subfamily A, member 3) TID1 antibody
Purification:	Purified by antigen-affinity chromatography.

Target Details

Target:	DNAJA3
Alternative Name:	TID1 (DNAJA3 Products)

Target Details

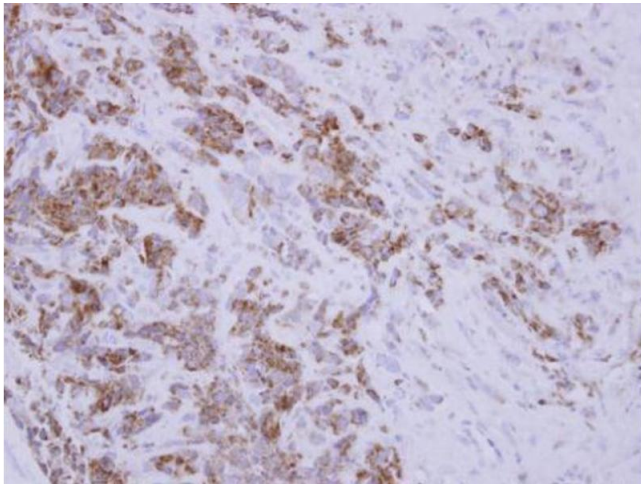
Background:	DNAJA3 belongs to the evolutionarily conserved DNAJ/HSP40 family of proteins. For background information on the DNAJ family, see MIM 608375.[supplied by OMIM]
	Cellular Localization: Mitochondrion matrix
Molecular Weight:	52 kDa
Gene ID:	9093
Pathways:	Synaptic Membrane , Skeletal Muscle Fiber Development , Positive Regulation of Endopeptidase Activity

Application Details

Application Notes:	Suggested dilution Reference ICC/IF 1:100-1:1000* IHC (Formalin-fixed paraffin-embedded sections) 1:100-1:1000* Western blot 1:500-1:3000* Not tested in other applications. *Optimal dilutions/concentrations should be determined by the researcher.Suggested dilutionReferenceICC/IF1:100-1:1000* IHC (Formalin-fixed paraffin-embedded sections)1:100-1:1000* Western blot1:500-1:3000*
Comment:	Positive Control: HepG2 , HCT116
Restrictions:	For Research Use only

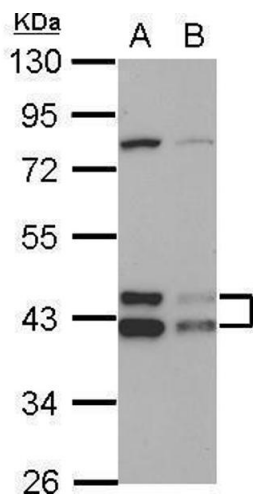
Handling

Format:	Liquid
Concentration:	0.46 mg/mL
Buffer:	1XPBS, 1 % BSA, 20 % Glycerol (pH 7). 0.01 % Thimerosal was added as a preservative.
Preservative:	Thimerosal (Merthiolate)
Precaution of Use:	This product contains Thimerosal (Merthiolate): a POISONOUS AND HAZARDOUS SUBSTANCE which should be handled by trained staff only.
Storage:	-20 °C
Storage Comment:	Keep as concentrated solution. Aliquot and store at -20°C or below. Avoid multiple freeze-thaw cycles.



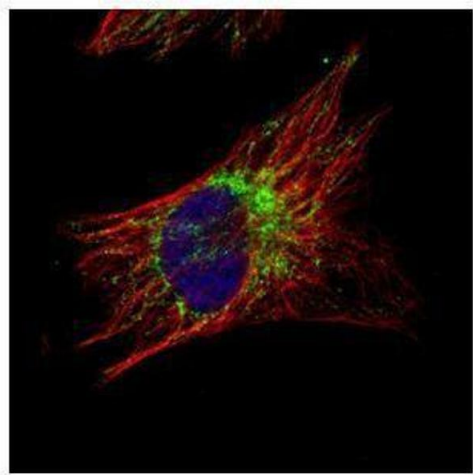
Immunohistochemistry

Image 1. IHC-P Image Immunohistochemical analysis of paraffin-embedded BT483 xenograft, using TID1, antibody at 1:250 dilution.



Western Blotting

Image 2. WB Image Sample (30 ug of whole cell lysate) A: HepG2 B: HCT116 10% SDS PAGE antibody diluted at 1:1000



Immunofluorescence

Image 3. ICC/IF Image Confocal immunofluorescence analysis (Olympus FV10i) of methanol-fixed HeLa, using TID1, antibody (Green) at 1:500 dilution. Alpha-tubulin filaments were labeled with (Red) at 1:2000.