

Datasheet for ABIN2854809

anti-MTA1 antibody**4** Images[Go to Product page](#)

Overview

Quantity:	100 µL
Target:	MTA1
Reactivity:	Human
Host:	Rabbit
Clonality:	Polyclonal
Conjugate:	This MTA1 antibody is un-conjugated
Application:	Immunohistochemistry (Paraffin-embedded Sections) (IHC (p)), Immunofluorescence (IF), Immunocytochemistry (ICC)

Product Details

Immunogen:	Recombinant protein encompassing a sequence within the center region of human MTA1. The exact sequence is proprietary.
Isotype:	IgG
Cross-Reactivity:	Human, Mouse, Rat
Characteristics:	Rabbit Polyclonal antibody to MTA1 (metastasis associated 1) MTA1 antibody [C1C3]
Purification:	Purified by antigen-affinity chromatography.

Target Details

Target:	MTA1
Alternative Name:	metastasis associated 1 (MTA1 Products)

Target Details

Background: This gene encodes a protein that was identified in a screen for genes expressed in metastatic cells, specifically, mammary adenocarcinoma cell lines. Expression of this gene has been correlated with the metastatic potential of at least two types of carcinomas although it is also expressed in many normal tissues. The role it plays in metastasis is unclear. It was initially thought to be the 70kD component of a nucleosome remodeling deacetylase complex, NuRD, but it is more likely that this component is a different but very similar protein. These two proteins are so closely related, though, that they share the same types of domains. These domains include two DNA binding domains, a dimerization domain, and a domain commonly found in proteins that methylate DNA. The profile and activity of this gene product suggest that it is involved in regulating transcription and that this may be accomplished by chromatin remodeling.

Cellular Localization: Isoform Short: Cytoplasm , Isoform Long: Nucleus

Molecular Weight: 81 kDa

Gene ID: 9112

UniProt: [Q13330](#)

Pathways: [Chromatin Binding](#)

Application Details

Application Notes: ICC/IF: 1:100-1:1000. IHC-P: 1:100-1:1000. Optimal dilutions/concentrations should be determined by the researcher. Not tested in other applications.

Restrictions: For Research Use only

Handling

Format: Liquid

Concentration: 1 mg/mL

Buffer: 1XPBS (pH 7), 20 % Glycerol, 0.01 % Thimerosal

Preservative: Thimerosal (Merthiolate)

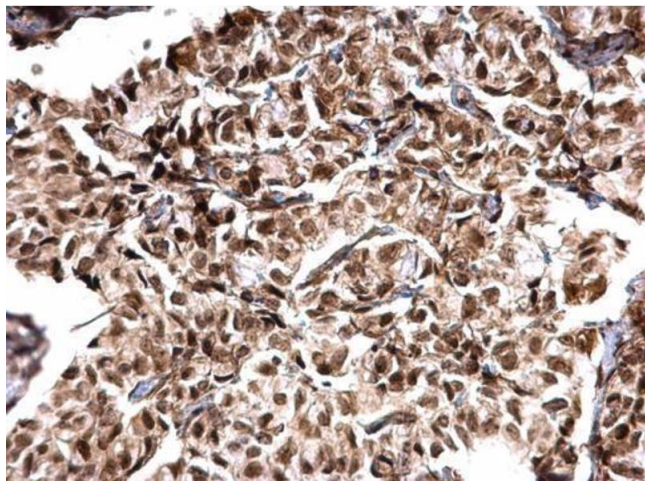
Precaution of Use: This product contains Thimerosal (Merthiolate): a POISONOUS AND HAZARDOUS SUBSTANCE which should be handled by trained staff only.

Storage: 4 °C, -20 °C

Handling

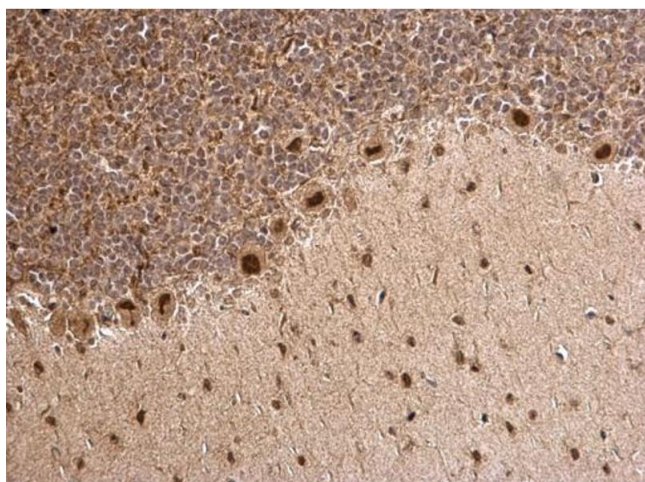
Storage Comment: Store as concentrated solution. Centrifuge briefly prior to opening vial. For short-term storage (1-2 weeks), store at 4°C. For long-term storage, aliquot and store at -20°C or below. Avoid multiple freeze-thaw cycles.

Images



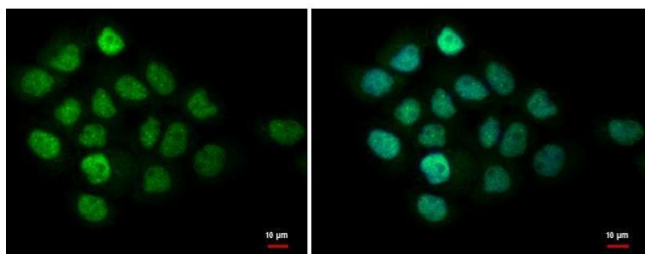
Immunohistochemistry

Image 1. IHC-P Image MTA1 antibody [C1C3] detects MTA1 protein at nucleus on human breast carcinoma by immunohistochemical analysis. Sample: Paraffin-embedded human breast carcinoma. MTA1 antibody [C1C3], dilution: 1:500.



Immunohistochemistry

Image 2. IHC-P Image MTA1 antibody [C1C3] detects MTA1 protein at nucleus on rat hind brain by immunohistochemical analysis. Sample: Paraffin-embedded rat hind brain. MTA1 antibody [C1C3], dilution: 1:500.



Immunofluorescence

Image 3. ICC/IF Image MTA1 antibody [C1C3] detects MTA1 protein at nucleus by immunofluorescent analysis. Sample: A431 cells were fixed in 4% paraformaldehyde at RT for 15 min. Green: MTA1 protein stained by MTA1 antibody [C1C3], diluted at 1:500. Blue: Hoechst 33342 staining.

Please check the [product details page](#) for more images. Overall 4 images are available for ABIN2854809.