

Datasheet for ABIN2854812

anti-TRIM25 antibody**3** Images[Go to Product page](#)

Overview

Quantity:	100 µL
Target:	TRIM25
Reactivity:	Human
Host:	Rabbit
Clonality:	Polyclonal
Conjugate:	This TRIM25 antibody is un-conjugated
Application:	Western Blotting (WB), Immunofluorescence (IF), Immunocytochemistry (ICC), Immunohistochemistry (Paraffin-embedded Sections) (IHC (p))

Product Details

Immunogen:	Recombinant protein encompassing a sequence within the center region of human TRIM25. The exact sequence is proprietary.
Isotype:	IgG
Cross-Reactivity:	Human
Characteristics:	Rabbit Polyclonal antibody to TRIM25 (tripartite motif-containing 25) TRIM25 antibody [N2C1], Internal
Purification:	Purified by antigen-affinity chromatography.

Target Details

Target:	TRIM25
Alternative Name:	tripartite motif containing 25 (TRIM25 Products)

Target Details

Background: The protein encoded by this gene is a member of the tripartite motif (TRIM) family. The TRIM motif includes three zinc-binding domains, a RING, a B-box type 1 and a B-box type 2, and a coiled-coil region. The protein localizes to the cytoplasm. The presence of potential DNA-binding and dimerization-transactivation domains suggests that this protein may act as a transcription factor, similar to several other members of the TRIM family. Expression of the gene is upregulated in response to estrogen, and it is thought to mediate estrogen actions in breast cancer as a primary response gene.

Molecular Weight: 71 kDa

Gene ID: 7706

UniProt: [Q14258](#)

Application Details

Application Notes: WB: 1:500-1:3000. ICC/IF: 1:100-1:1000. IHC-P: 1:100-1:1000. Optimal dilutions/concentrations should be determined by the researcher. Not tested in other applications.

Comment: Positive Control: Jurkat , Raji , NCI-H929

Restrictions: For Research Use only

Handling

Format: Liquid

Concentration: 1 mg/mL

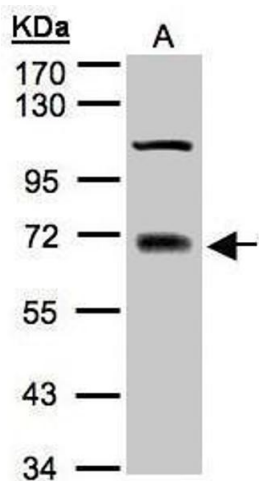
Buffer: 1XPBS (pH 7), 40 % Glycerol, 0.01 % Thimerosal

Preservative: Thimerosal (Merthiolate)

Precaution of Use: This product contains Thimerosal (Merthiolate): a POISONOUS AND HAZARDOUS SUBSTANCE which should be handled by trained staff only.

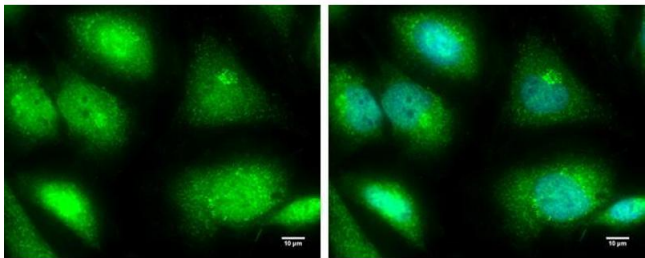
Storage: 4 °C,-20 °C

Storage Comment: Store as concentrated solution. Centrifuge briefly prior to opening vial. For short-term storage (1-2 weeks), store at 4°C. For long-term storage, aliquot and store at -20°C or below. Avoid multiple freeze-thaw cycles.



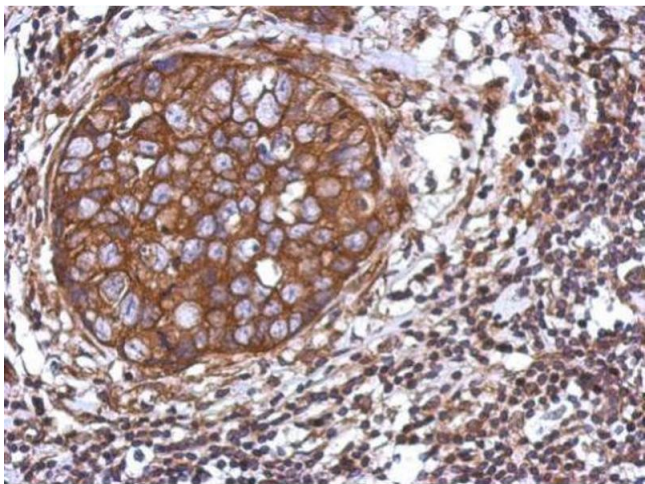
Western Blotting

Image 1. WB Image Sample(30 µg of whole cell lysate)
A:A431 7.5% SDS PAGE antibody diluted at 1:3000



Immunofluorescence

Image 2. ICC/IF Image TRIM25 antibody [N2C1], Internal detects TRIM25 protein at cytoplasm and nucleus by immunofluorescent analysis. Sample: HeLa cells were fixed in 4% paraformaldehyde for 10 min. Green: TRIM25 protein stained by TRIM25 antibody [N2C1], Internal , diluted at 1:100. Blue: Hoechst 33342 staining. Scale bar = 10 µm.



Immunohistochemistry

Image 3. IHC-P Image Immunohistochemical analysis of paraffin-embedded human breast cancer, using TRIM25, antibody at 1:500 dilution.