

Datasheet for ABIN2854819
anti-c-MET antibody (C-Term)

5 Images

[Go to Product page](#)

Overview

Quantity:	100 µL
Target:	c-MET (MET)
Binding Specificity:	C-Term
Reactivity:	Human
Host:	Rabbit
Clonality:	Polyclonal
Conjugate:	This c-MET antibody is un-conjugated
Application:	Western Blotting (WB), Immunofluorescence (IF), Immunoprecipitation (IP), Immunocytochemistry (ICC)

Product Details

Immunogen:	Carrier-protein conjugated synthetic peptide encompassing a sequence within the C-terminus region of human c-Met. The exact sequence is proprietary.
Isotype:	IgG
Cross-Reactivity:	Chimpanzee
Cross-Reactivity (Details):	Chimpanzee (100 %)
Characteristics:	Rabbit Polyclonal antibody to MET (met proto-oncogene (hepatocyte growth factor receptor)) c-Met antibody [C3], C-term
Purification:	Purified by antigen-affinity chromatography.

Target Details

Target:	c-MET (MET)
Alternative Name:	C-Met (MET Products)
Background:	<p>The proto-oncogene MET product is the hepatocyte growth factor receptor and encodes tyrosine-kinase activity. The primary single chain precursor protein is post-translationally cleaved to produce the alpha and beta subunits, which are disulfide linked to form the mature receptor. Various mutations in the MET gene are associated with papillary renal carcinoma. Two transcript variants encoding different isoforms have been found for this gene.</p> <p>Cellular Localization: Membrane, Single-pass type I membrane protein</p>
Molecular Weight:	156 kDa
Gene ID:	4233
Pathways:	RTK Signaling , Carbohydrate Homeostasis , Synaptic Membrane , Signaling of Hepatocyte Growth Factor Receptor

Application Details

Application Notes:	<p>Suggested dilution Reference ICC/IF 1:100-1:1000* Immunoprecipitation 1:100-1:500* Western blot 1:500-1:3000* Not tested in other applications. *Optimal dilutions/concentrations should be determined by the researcher.Suggested dilutionReferenceICC/IF1:100-1:1000* Immunoprecipitation1:100-1:500* Western blot1:500-1:3000*</p>
Comment:	Positive Control: HeLaS3
Restrictions:	For Research Use only

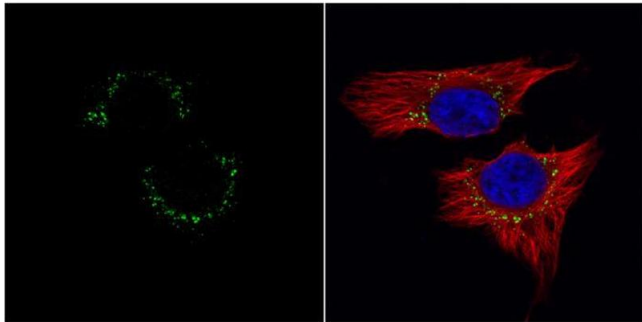
Handling

Format:	Liquid
Concentration:	1 mg/mL
Buffer:	0.1M Tris, 0.1M Glycine, 10 % Glycerol (pH 7). 0.01 % Thimerosal was added as a preservative.
Preservative:	Thimerosal (Merthiolate)
Precaution of Use:	This product contains Thimerosal (Merthiolate): a POISONOUS AND HAZARDOUS SUBSTANCE which should be handled by trained staff only.
Storage:	-20 °C

Handling

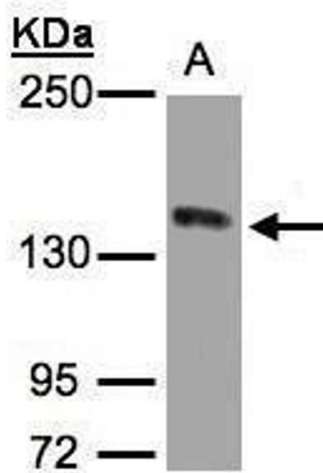
Storage Comment: Keep as concentrated solution. Aliquot and store at -20°C or below. Avoid multiple freeze-thaw cycles.

Images



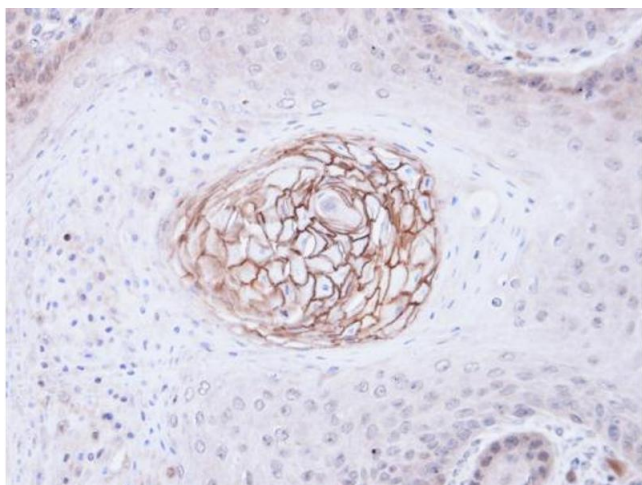
Immunofluorescence

Image 1. ICC/IF Image c-Met antibody [c3], c-term detects c-Met protein at cytoplasm by immunofluorescent analysis. Sample: HeLa cells were fixed in 4% paraformaldehyde at RT for 15 min. Green: c-Met protein stained by c-Met antibody [c3], c-term, diluted at 1:1000. Red: alpha Tubulin, a cytoskeleton marker, stained by alpha Tubulin antibody [GT114], diluted at 1:500. Blue: Hoechst 33342 staining.



Western Blotting

Image 2. WB Image Sample(30 ug whole cell lysate) A:HeLa S3, 5% SDS PAGE antibody diluted at 1:1000



Immunohistochemistry

Image 3. IHC-P Image Immunohistochemical analysis of paraffin-embedded Cal27 xenograft, using c-Met, antibody at 1:100 dilution.

Please check the [product details page](#) for more images. Overall 5 images are available for ABIN2854819.