

Datasheet for ABIN2854820
anti-CD36 antibody (C-Term)

4 Images

1 Publication

[Go to Product page](#)

Overview

Quantity:	100 µL
Target:	CD36
Binding Specificity:	C-Term
Reactivity:	Human
Host:	Rabbit
Clonality:	Polyclonal
Conjugate:	This CD36 antibody is un-conjugated
Application:	Western Blotting (WB), Immunofluorescence (IF), Immunohistochemistry (Paraffin-embedded Sections) (IHC (p)), Immunocytochemistry (ICC)

Product Details

Immunogen:	Carrier-protein conjugated synthetic peptide encompassing a sequence within the C-terminus region of human CD36. The exact sequence is proprietary.
Isotype:	IgG
Cross-Reactivity:	Human, Mouse
Characteristics:	Rabbit Polyclonal antibody to CD36 (CD36 Molecule (thrombospondin receptor)) CD36 antibody [C1C3]
Purification:	Purified by antigen-affinity chromatography.

Target Details

Target:	CD36
---------	------

Target Details

Alternative Name:	CD36 molecule (CD36 Products)
Background:	<p>The protein encoded by this gene is the fourth major glycoprotein of the platelet surface and serves as a receptor for thrombospondin in platelets and various cell lines. Since thrombospondins are widely distributed proteins involved in a variety of adhesive processes, this protein may have important functions as a cell adhesion molecule. It binds to collagen, thrombospondin, anionic phospholipids and oxidized LDL. It directly mediates cytoadherence of Plasmodium falciparum parasitized erythrocytes and it binds long chain fatty acids and may function in the transport and/or as a regulator of fatty acid transport. Mutations in this gene cause platelet glycoprotein deficiency. Multiple alternatively spliced transcript variants encoding the same protein have been found for this gene.</p> <p>Cellular Localization: Membrane</p>
Molecular Weight:	53 kDa
Gene ID:	948
UniProt:	P16671
Pathways:	TLR Signaling , Peptide Hormone Metabolism , Response to Growth Hormone Stimulus , Activation of Innate immune Response , Cellular Response to Molecule of Bacterial Origin , Regulation of Lipid Metabolism by PPARalpha , Positive Regulation of Immune Effector Process , Production of Molecular Mediator of Immune Response , Hepatitis C , Toll-Like Receptors Cascades , Lipid Metabolism , S100 Proteins

Application Details

Application Notes:	WB: 1:500-1:3000. ICC/IF: 1:100-1:1000. IHC-P: 1:100-1:1000. Optimal dilutions/concentrations should be determined by the researcher. Not tested in other applications.
Comment:	Positive Control: mouse brown adipose Validation: Orthogonal
Restrictions:	For Research Use only

Handling

Format:	Liquid
Concentration:	0.47 mg/mL
Buffer:	1XPBS (pH 7), 1 % BSA, 20 % Glycerol, 0.025 % ProClin 300

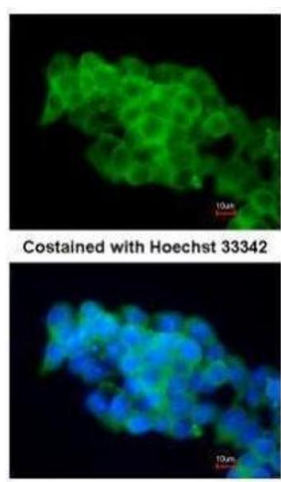
Handling

Preservative:	ProClin
Precaution of Use:	This product contains ProClin: a POISONOUS AND HAZARDOUS SUBSTANCE which should be handled by trained staff only.
Storage:	4 °C,-20 °C
Storage Comment:	Store as concentrated solution. Centrifuge briefly prior to opening vial. For short-term storage (1-2 weeks), store at 4°C. For long-term storage, aliquot and store at -20°C or below. Avoid multiple freeze-thaw cycles.

Publications

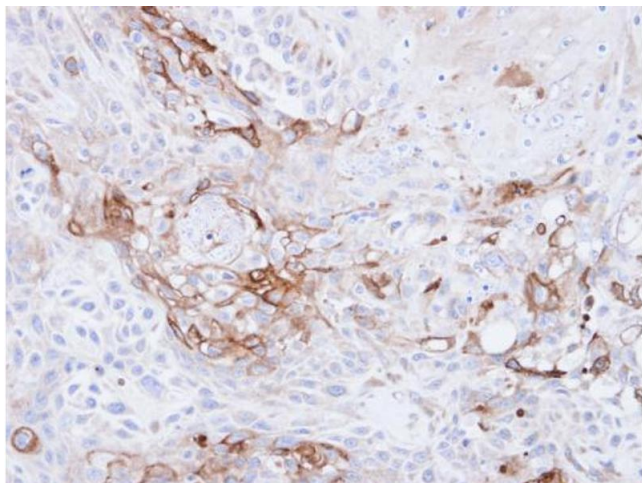
Product cited in:	Sarin, Engel, Rothweiler, Cinatl, Michaelis, Frötschl, Fröhlich, Kalayda: "Key Players of Cisplatin Resistance: Towards a Systems Pharmacology Approach." in: International journal of molecular sciences , Vol. 19, Issue 3, (2018) (PubMed).
-------------------	---

Images



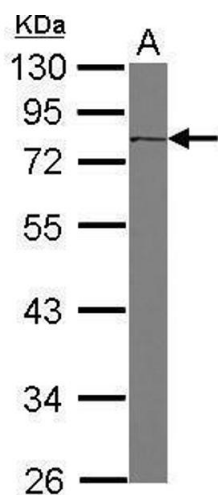
Immunofluorescence

Image 1. ICC/IF Image Immunofluorescence analysis of paraformaldehyde-fixed mouse ESC D3, using CD36, antibody at 1:200 dilution.



Immunohistochemistry

Image 2. IHC-P Image Immunohistochemical analysis of paraffin-embedded Ca922 xenograft, using CD36, antibody at 1:500 dilution.



Western Blotting

Image 3. WB Image Sample (30 ug of whole cell lysate) A: K562 10% SDS PAGE antibody diluted at 1:1000

Please check the [product details page](#) for more images. Overall 4 images are available for ABIN2854820.