

Datasheet for ABIN2854826  
**anti-SOD1 antibody (C-Term)**

10 Images

1 Publication

[Go to Product page](#)

## Overview

Quantity:	100 µL
Target:	SOD1
Binding Specificity:	C-Term
Reactivity:	Human
Host:	Rabbit
Clonality:	Polyclonal
Conjugate:	This SOD1 antibody is un-conjugated
Application:	Western Blotting (WB), Immunohistochemistry (Frozen Sections) (IHC (fro))

## Product Details

Immunogen:	Carrier-protein conjugated synthetic peptide encompassing a sequence within the C-terminus region of human SOD1. The exact sequence is proprietary.
Isotype:	IgG
Cross-Reactivity:	Human, Mouse, Rat
Characteristics:	Rabbit Polyclonal antibody to SOD1 (superoxide dismutase 1, soluble) SOD1 antibody
Purification:	Purified by antigen-affinity chromatography.
Grade:	KO Validated

## Target Details

Target:	SOD1
Alternative Name:	superoxide dismutase 1 ( <a href="#">SOD1 Products</a> )
Background:	<p>The protein encoded by this gene binds copper and zinc ions and is one of two isozymes responsible for destroying free superoxide radicals in the body. The encoded isozyme is a soluble cytoplasmic protein, acting as a homodimer to convert naturally-occurring but harmful superoxide radicals to molecular oxygen and hydrogen peroxide. The other isozyme is a mitochondrial protein. Mutations in this gene have been implicated as causes of familial amyotrophic lateral sclerosis. Rare transcript variants have been reported for this gene.</p> <p>Cellular Localization: Cytoplasm</p>
Molecular Weight:	16 kDa
Gene ID:	6647
UniProt:	<a href="#">P00441</a>
Pathways:	<a href="#">Sensory Perception of Sound</a> , <a href="#">Transition Metal Ion Homeostasis</a>

## Application Details

Application Notes:	WB: 1:500-1:10000. Optimal dilutions/concentrations should be determined by the researcher. Not tested in other applications.
Comment:	Positive Control: Rat brain , 293T , A431 , HeLa , HepG2 Validation: KO/KD, Orthogonal
Restrictions:	For Research Use only

## Handling

Format:	Liquid
Concentration:	0.21 mg/mL
Buffer:	1XPBS pH 7, 1 % BSA, 20 % Glycerol, 0.025 % ProClin 300
Preservative:	ProClin
Precaution of Use:	This product contains ProClin: a POISONOUS AND HAZARDOUS SUBSTANCE which should be handled by trained staff only.
Storage:	4 °C, -20 °C

## Handling

---

**Storage Comment:** Store as concentrated solution. Centrifuge briefly prior to opening vial. For short-term storage (1-2 weeks), store at 4°C. For long-term storage, aliquot and store at -20°C or below. Avoid multiple freeze-thaw cycles.

## Publications

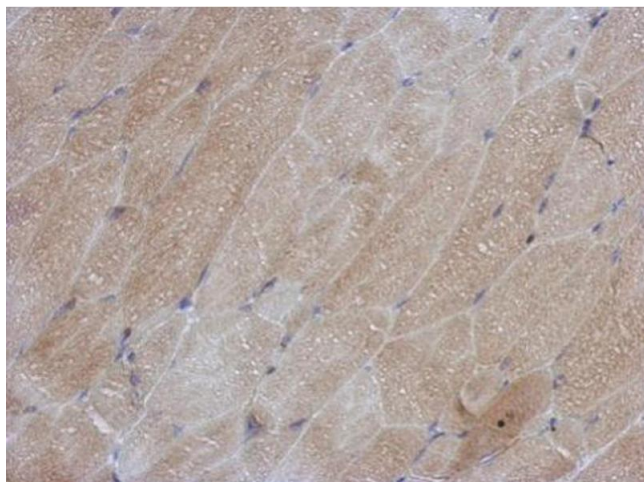
---

**Product cited in:** Chen, Lin, Chen, Cheng, Cheng, Imai et al.: "Effect of prednisolone on glyoxalase 1 in an inbred mouse model of aristolochic acid nephropathy using a proteomics method with fluorogenic derivatization-liquid chromatography-tandem mass ..." in: **PLoS ONE**, Vol. 15, Issue 1, pp. e0227838, (2020) ([PubMed](#)).

Dawson, Biggar, Storey: "Characterization of fructose-1,6-bisphosphate aldolase during anoxia in the tolerant turtle, Trachemys scripta elegans: an assessment of enzyme activity, expression and structure." in: **PLoS ONE**, Vol. 8, Issue 7, pp. e68830, (2014) ([PubMed](#)).

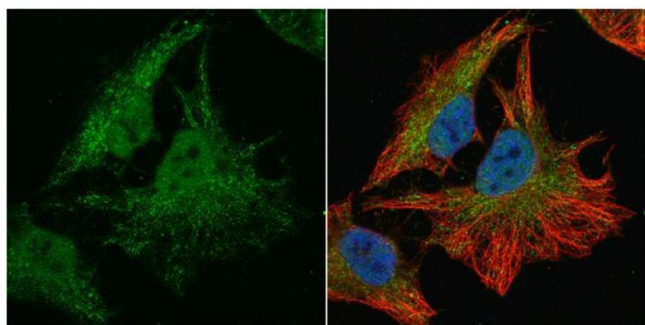
## Images

---



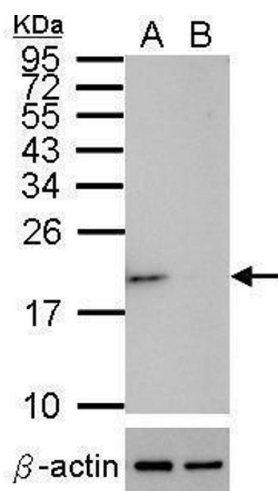
### Immunohistochemistry

**Image 1.** IHC-P Image Immunohistochemical analysis of paraffin-embedded mouse muscle, using SOD1, antibody at 1:500 dilution.



### Immunofluorescence

**Image 2.** ICC/IF Image SOD1 antibody detects SOD1 protein at cytoplasm and nucleus by immunofluorescent analysis. Sample: HeLa cells were fixed in 4% paraformaldehyde at RT for 15 min. Green: SOD1 protein stained by SOD1 antibody , diluted at 1:100. Red: alpha Tubulin, a cytoskeleton marker, stained by alpha Tubulin antibody [GT114] , diluted at 1:1000. Blue: Hoechst 33342 staining.



### Western Blotting

**Image 3.** WB Image Western blot analysis of SOD1 (, upper panel) and beta-actin , lower panel) Sample (30 ug of whole cell lysate) A: HeLa mock control B: HeLa transfected shSOD1 15% SDS PAGE antibody diluted at 1:500

Please check the [product details page](#) for more images. Overall 10 images are available for ABIN2854826.