

Datasheet for ABIN2854833
anti-CEBPB antibody (N-Term)

9 Images

[Go to Product page](#)

Overview

Quantity:	100 µL
Target:	CEBPB
Binding Specificity:	N-Term
Reactivity:	Human
Host:	Rabbit
Clonality:	Polyclonal
Conjugate:	This CEBPB antibody is un-conjugated
Application:	Western Blotting (WB), Immunohistochemistry (IHC), Immunohistochemistry (Paraffin-embedded Sections) (IHC (p)), Immunofluorescence (IF), Immunoprecipitation (IP), Immunocytochemistry (ICC), Chromatin Immunoprecipitation (ChIP)

Product Details

Immunogen:	Carrier-protein conjugated synthetic peptide encompassing a sequence within the N-terminus region of human C/EBP beta. The exact sequence is proprietary.
Isotype:	IgG
Cross-Reactivity:	Human
Characteristics:	Rabbit Polyclonal antibody to C/EBP beta (CCAAT/enhancer binding protein (C/EBP), beta) C/EBP beta antibody
Purification:	Purified by antigen-affinity chromatography.
Grade:	KO Validated

Target Details

Target:	CEBPB
Alternative Name:	CCAAT enhancer binding protein beta (CEBPB Products)
Background:	<p>The protein encoded by this intronless gene is a bZIP transcription factor which can bind as a homodimer to certain DNA regulatory regions. It can also form heterodimers with the related proteins CEBP-alpha, CEBP-delta, and CEBP-gamma. The encoded protein is important in the regulation of genes involved in immune and inflammatory responses and has been shown to bind to the IL-1 response element in the IL-6 gene, as well as to regulatory regions of several acute-phase and cytokine genes. In addition, the encoded protein can bind the promoter and upstream element and stimulate the expression of the collagen type I gene.</p> <p>Cellular Localization: Nucleus</p>
Molecular Weight:	36 kDa
Gene ID:	1051
UniProt:	P17676
Pathways:	Interferon-gamma Pathway , Autophagy , Brown Fat Cell Differentiation

Application Details

Application Notes:	WB: 1:500-1:3000. ICC/IF: 1:100-1:1000. IHC-P: 1:100-1:1000. IP: 1:100-1:500. Optimal dilutions/concentrations should be determined by the researcher. Not tested in other applications.
Comment:	Validatio: KO/KD, Orthogonal
Restrictions:	For Research Use only

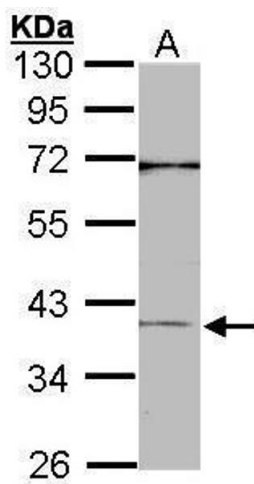
Handling

Format:	Liquid
Concentration:	0.89 mg/mL
Buffer:	1XPBS pH 7, 20 % Glycerol, 0.025 % ProClin 300
Preservative:	ProClin
Precaution of Use:	This product contains ProClin: a POISONOUS AND HAZARDOUS SUBSTANCE which should be handled by trained staff only.

Handling

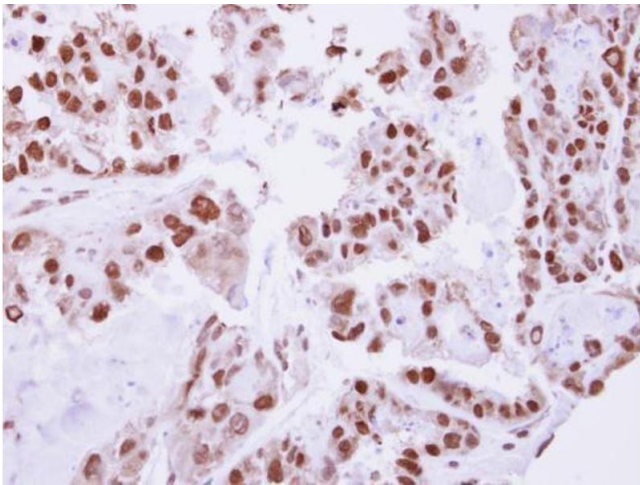
Storage:	4 °C, -20 °C
Storage Comment:	Store as concentrated solution. Centrifuge briefly prior to opening vial. For short-term storage (1-2 weeks), store at 4°C. For long-term storage, aliquot and store at -20°C or below. Avoid multiple freeze-thaw cycles.

Validation report #104437 for Cleavage Under Targets and Release Using Nuclease (CUT&RUN)



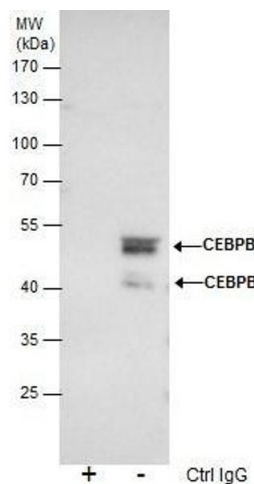
Western Blotting

Image 1. WB Image Sample (30 ug of whole cell lysate) A: A431 , 10% SDS PAGE antibody diluted at 1:1000



Immunohistochemistry

Image 2. IHC-P Image Immunohistochemical analysis of paraffin-embedded human ovarian cancer, using C/EBP beta, antibody at 1:250 dilution.



Immunoprecipitation

Image 3. IP Image Immunoprecipitation of CEBPB protein from HeLa nuclear extracts using 5 µg of C/EBP beta antibody, Western blot analysis was performed using C/EBP beta antibody, EasyBlot anti-Rabbit IgG was used as a secondary reagent.

Please check the [product details page](#) for more images. Overall 9 images are available for ABIN2854833.