



Datasheet for ABIN2854838
anti-CST4 antibody (N-Term)



[Go to Product page](#)

3 Images

Overview

Quantity:	100 µL
Target:	CST4
Binding Specificity:	N-Term
Reactivity:	Human
Host:	Rabbit
Clonality:	Polyclonal
Conjugate:	This CST4 antibody is un-conjugated
Application:	Western Blotting (WB), Immunocytochemistry (ICC), Immunofluorescence (IF), Immunohistochemistry (Paraffin-embedded Sections) (IHC (p))

Product Details

Immunogen:	Carrier-protein conjugated synthetic peptide encompassing a sequence within the N-terminus region of human Cystatin S. The exact sequence is proprietary.
Isotype:	IgG
Cross-Reactivity:	Human
Characteristics:	Rabbit Polyclonal antibody to Cystatin S (cystatin S) Cystatin S antibody [N1N3]
Purification:	Purified by antigen-affinity chromatography.

Target Details

Target:	CST4
---------	------

Target Details

Alternative Name: [cystatin S \(CST4 Products\)](#)

Background: The cystatin superfamily encompasses proteins that contain multiple cystatin-like sequences. Some of the members are active cysteine protease inhibitors, while others have lost or perhaps never acquired this inhibitory activity. There are three inhibitory families in the superfamily, including the type 1 cystatins (stefins), type 2 cystatins and the kininogens. The type 2 cystatin proteins are a class of cysteine proteinase inhibitors found in a variety of human fluids and secretions. The cystatin locus on chromosome 20 contains the majority of the type 2 cystatin genes and pseudogenes. This gene is located in the cystatin locus and encodes a type 2 salivary cysteine peptidase inhibitor. The protein is an S-type cystatin, based on its high level of expression in saliva, tears and seminal plasma. The specific role in these fluids is unclear but antibacterial and antiviral activity is present, consistent with a protective function.

Cellular Localization: Secreted

Molecular Weight: 16 kDa

Gene ID: 1472

UniProt: [P01036](#)

Application Details

Application Notes: WB: 1:500-1:3000. ICC/IF: 1:100-1:1000. IHC-P: 1:100-1:1000. Optimal dilutions/concentrations should be determined by the researcher. Not tested in other applications.

Restrictions: For Research Use only

Handling

Format: Liquid

Concentration: 1 mg/mL

Buffer: 0.1M Tris-Glycine (pH 7), 10 % Glycerol, 0.01 % Thimerosal

Preservative: Thimerosal (Merthiolate)

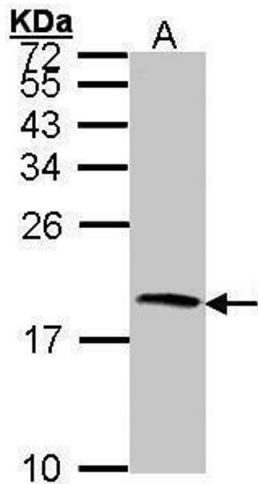
Precaution of Use: This product contains Thimerosal (Merthiolate): a POISONOUS AND HAZARDOUS SUBSTANCE which should be handled by trained staff only.

Storage: 4 °C,-20 °C

Storage Comment: Store as concentrated solution. Centrifuge briefly prior to opening vial. For short-term storage

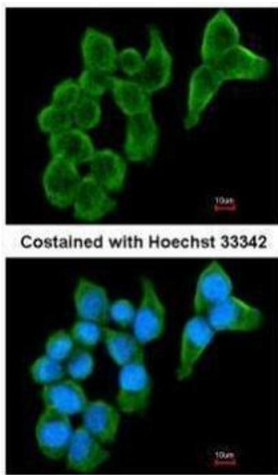
(1-2 weeks), store at 4°C. For long-term storage, aliquot and store at -20°C or below. Avoid multiple freeze-thaw cycles.

Validation report #104426 for Immunohistochemistry (IHC)



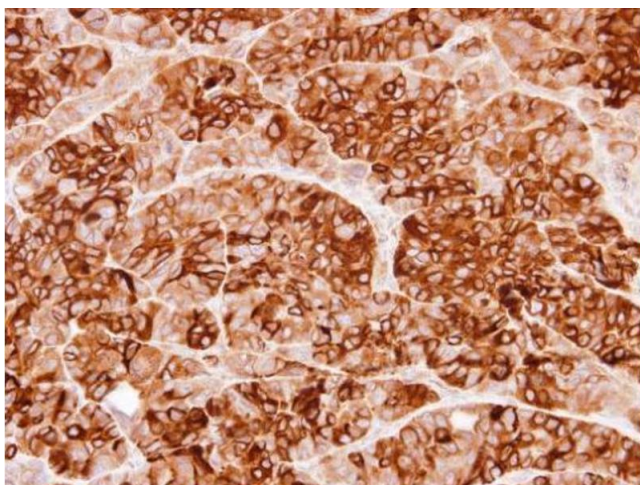
Western Blotting

Image 1. WB Image Sample (30 ug of whole cell lysate) A: Hep G2 , 15% SDS PAGE antibody diluted at 1:1000



Immunofluorescence

Image 2. ICC/IF Image Immunofluorescence analysis of methanol-fixed A431, using Cystatin S, antibody at 1:200 dilution.



Immunohistochemistry

Image 3. IHC-P Image Immunohistochemical analysis of paraffin-embedded SW480 xenograft, using Cystatin S, antibody at 1:100 dilution.