



[Go to Product page](#)

Datasheet for ABIN2854840  
**anti-S100A10 antibody**

2 Images

Overview

Quantity:	100 µL
Target:	S100A10
Reactivity:	Human
Host:	Rabbit
Clonality:	Polyclonal
Conjugate:	This S100A10 antibody is un-conjugated
Application:	Western Blotting (WB), Immunohistochemistry (Paraffin-embedded Sections) (IHC (p))

Product Details

Immunogen:	Carrier-protein conjugated synthetic peptide encompassing a sequence within the center region of human S100A10. The exact sequence is proprietary.
Isotype:	IgG
Cross-Reactivity:	Human
Characteristics:	Rabbit Polyclonal antibody to S100A10 (S100 calcium binding protein A10) S100A10 antibody
Purification:	Purified by antigen-affinity chromatography.
Grade:	KO Validated

Target Details

Target:	S100A10
---------	---------

## Target Details

---

Alternative Name:	S100 calcium binding protein A10 ( <a href="#">S100A10 Products</a> )
Background:	The protein encoded by this gene is a member of the S100 family of proteins containing 2 EF-hand calcium-binding motifs. S100 proteins are localized in the cytoplasm and/or nucleus of a wide range of cells, and involved in the regulation of a number of cellular processes such as cell cycle progression and differentiation. S100 genes include at least 13 members which are located as a cluster on chromosome 1q21. This protein may function in exocytosis and endocytosis.
Molecular Weight:	11 kDa
Gene ID:	6281
UniProt:	<a href="#">P60903</a>
Pathways:	<a href="#">S100 Proteins</a>

## Application Details

---

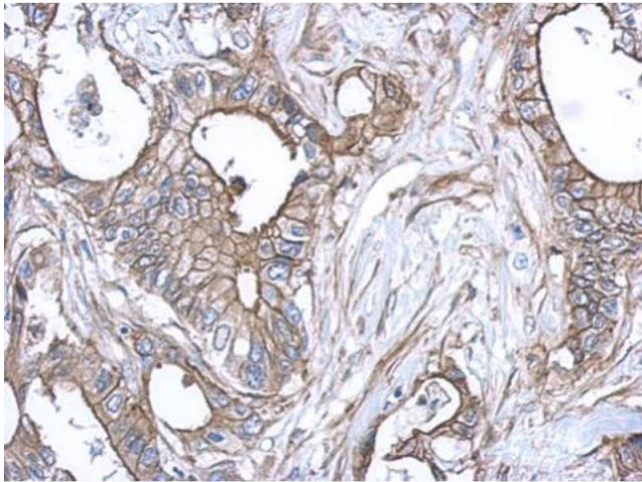
Application Notes:	WB: 1:500-1:3000. IHC-P: 1:100-1:1000. Optimal dilutions/concentrations should be determined by the researcher. Not tested in other applications.
Comment:	Positive Control: A431 , 293T Validation: KO/KD
Restrictions:	For Research Use only

## Handling

---

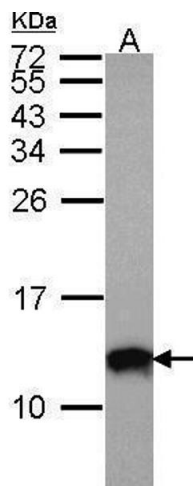
Format:	Liquid
Concentration:	1 mg/mL
Buffer:	0.1M Tris-Glycine ( pH 7), 10 % Glycerol, 0.01 % Thimerosal
Preservative:	Thimerosal (Merthiolate)
Precaution of Use:	This product contains Thimerosal (Merthiolate): a POISONOUS AND HAZARDOUS SUBSTANCE which should be handled by trained staff only.
Storage:	4 °C,-20 °C
Storage Comment:	Store as concentrated solution. Centrifuge briefly prior to opening vial. For short-term storage (1-2 weeks), store at 4°C. For long-term storage, aliquot and store at -20°C or below. Avoid

multiple freeze-thaw cycles.



### Immunohistochemistry

**Image 1.** IHC-P Image Immunohistochemical analysis of paraffin-embedded human gastric cancer, using S100A10, antibody at 1:500 dilution.



### Western Blotting

**Image 2.** WB Image Sample (30 ug of whole cell lysate) A: A431, 15% SDS PAGE antibody diluted at 1:1000